

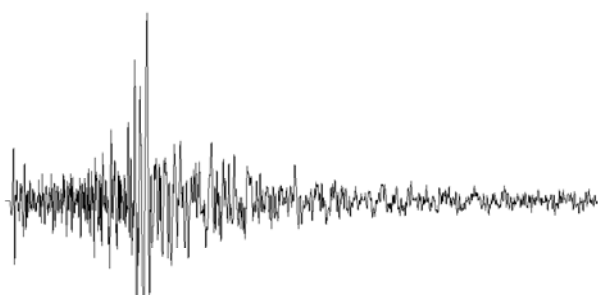
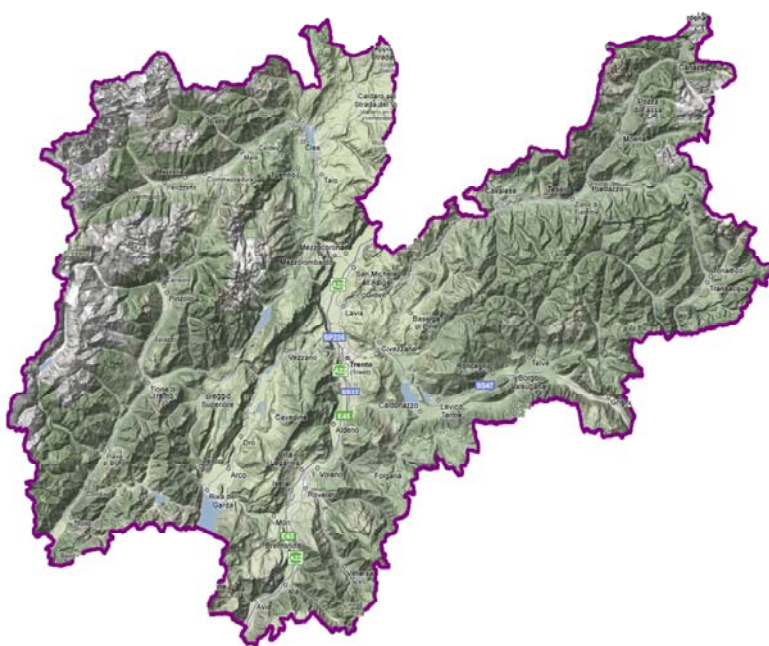


PROVINCIA AUTONOMA DI TRENTO

SERVIZIO GEOLOGICO - UFFICIO STUDI GEOFISICI

TRENTINO SEISMOMETRIC NETWORK

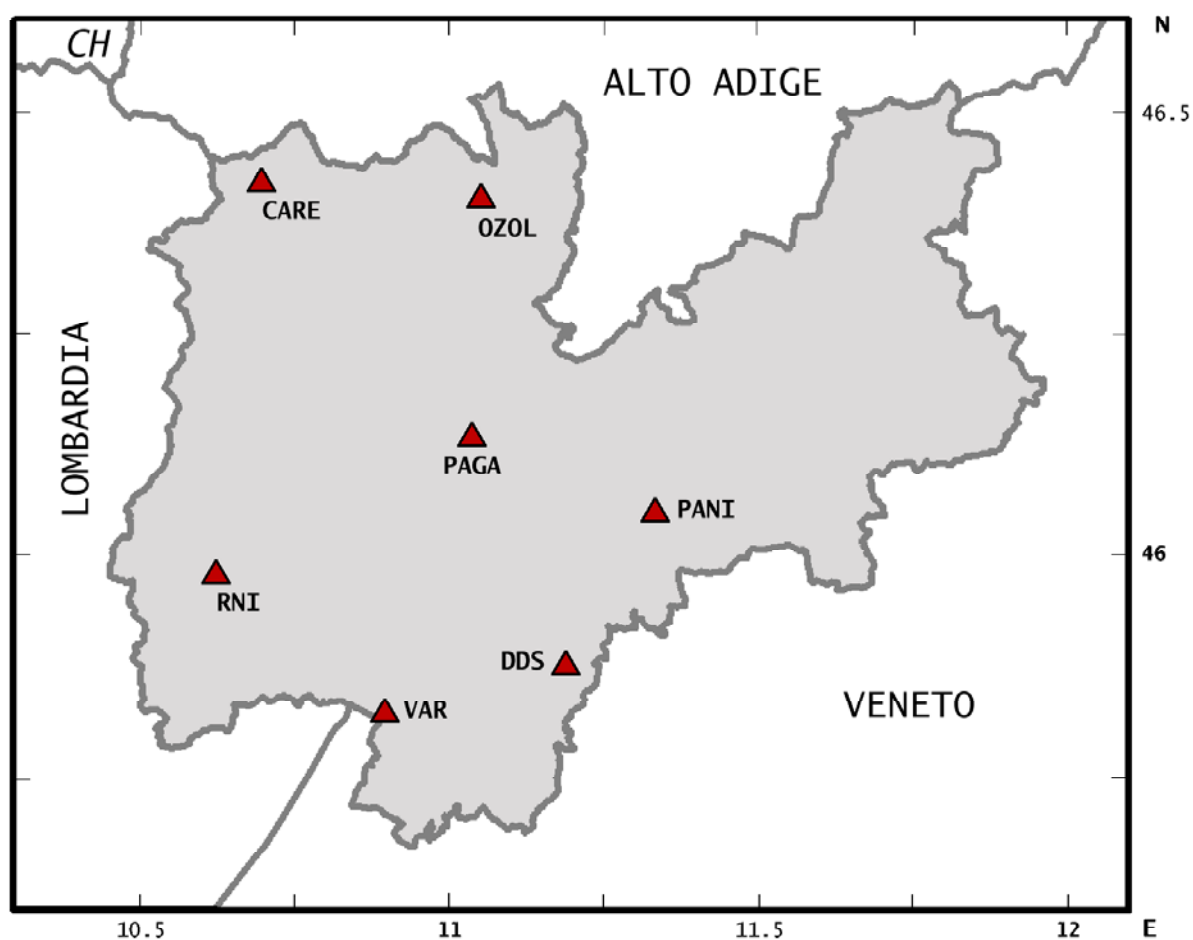
JANUARY
MARCH
2008



QUARTERLY BULLETIN

TRENTINO SEISMOMETRIC NETWORK

PROVINCIA AUTONOMA DI TRENTO
Servizio Geologico - Ufficio Studi Geofisici
Via Vienna, 17 38121 TRENTO
TEL 0461 492585 - FAX 0461 492521
E-mail: infoeq@retesismicatrento.org



RNI	Roncone (Malga Avalina)	45,9809	10,6228	1915
VAR	Monte Varagna	45,8271	10,8981	1730
DDS	Dosso del Sommo	45,8800	11,1889	1670
PANI	Monte Panarotta	46,0508	11,3349	1985
OZOL	Monte Ozolo	46,4033	11,0517	1230
CARE	Lago del Careser	46,4245	10,6974	2610
PAGA	Cima Paganelle	46,1372	11,0383	2105

EVENT HEADER

Program for earthquake parameters : Hypoellipse 2.0

Date : origin date of event

Time : origin time of event
(Greenwich Mean Time)

Geographical Coordinates : hypocentral coordinates
LAT N, LON E and Depth (degrees and km)

Magnitude : MA : mean amplitude magnitude
MD : mean duration magnitude

Location Errors : az1 : azimuth of axis 1 of error ellipsoid (deg.)
dp1 : dip of axis 1
se1 : length of ellipsoid semiaxis 1 (km)
az2 : azimuth of axis 2 of error ellipsoid (deg.)
dp2 : dip of axis 2
se2 : length of ellipsoid semiaxis 2 (km)
q : either error ellipsoid quality
A : very good
B : good
C : poor
D : bad

RMS : root mean square of residual

Type (of event) : 0 : local or near
10 : near/remote
1 to 3 : explosions (see Notes)

Epicentral Area : town,village or geographical zone;
between brackets Italian County or European Count.
station code failing hypocentral location

Notes : expl?? uncertain explosion
expl? probable explosion
expl! explosion
data from other seismological centers :
(N) is the NEIC (USGS)
(O) is the OGS-CRS (N-E Italy Seismic Network)
(I) is the INGV (Rome)
(S) is the Swiss Seismological Service

STATION DATA

st_name : station code
 RNI is 3D station (RNIV for vertical component;
 RNIN for north-south component; RNIE for east-west component)
 VAR is 3D station (VARV for vertical component;
 VARN for north-south component; VARE for east-west component)
 DDS is 3D station (DDSV for vertical component;
 DDSN for north-south component; DDSE for east-west component)
 PANI is 3D station (PANV for vertical component;
 PANN for north-south component; PANE for east-west component)
 OZOL is 3D station (OZOV for vertical component
 OZON for north-south component; OZOE for east-west component)
 CARE is 3D station (CARV for vertical component;
 CARN for north-south component; CARE for east-west component)
 PAG is 1D station (PAGV for vertical component)

p_rem : P remark : E = emersion; I = impetus
m : first motion direction of P-arrival:
 C = compression; D = dilatation

w_p : P-phase weighth code:
 0 = full weighth; 1 to 3 = partial weighth; 8 = no weighth

time_s : time of P-arrival (HH-MM-SS)

dist : distance (km)

azm : azimuth from epicenter to station (degrees)

s_sec : seconds of S-arrival

w_s : S-phase weighth code (see w_p for explanation)

ain : angle of ray leaving hypocenter (degrees)

mx_amp : maximum peak-to-peak amplitude (mm)

per : period of maximum amplitude (seconds)

p_calc : P travel time computed

p_std : P standard error

cf : corrected first motion symbol

f_p time : F-P time interval for f_mag (seconds)

p_res : residual of P-arrival (seconds)

s_std : S standard error

s_res : residual of S-arrival (seconds)

x_mag : local Richter magnitude for amplitude signal

f_mag : duration magnitude calculated according to empirical equation
 (Rebez, Renner, Slejko - 1984)

$$f_mag = a + b \log(t) + c \ d$$
 t = average duration
 d = average epicentral distance
 a, b and c = empirical costant

QUATERLY BULLETTIN *January-March 2008*

DATE	TIME	Geogr. Coord.		DEPTH	Magnitude		LOCATION ERRORS						RMS	TYPE	EPICENTRAL AREA		NOTES	
DD-MM-YY	HH/MM/SS	LAT N	LON E	h (Km)	MA	MD	az1	dp1	se1	az2	dp2	se2	q					

01/01/2008	2.20.35.02	44.7035	10.4786	5,93		2,6	120	12	23	25	24	8,9	D	0,15	0	MONTECCHIO EM. (RE)							
st_name	p_rem	m	w_p	time_s	dist	azm	s_sec	w_s	ain	mx_amp	per	p_calc	p_std	cf	f_p_time	p_res	s_std	s_res	xmag	fmag			
RNI	e		1	2.20.59.30	142,4	4	79,45	3	59			24,26	0,5		75	-0,14	2	0,95		2,4			
DDS	i	d	1	2.20.59.60	142,1	23	80,83	3	59			24,22	0,5	D	66	0,22	2	2,45		2,2			
PANI	e		2	2.21.02.21	164,1	24	23,76	2	59			27,45	1		80	-0,42	1	-0,42		2,4			
OZOL	i	d	0	2.21.06.58	194,2	13	31,38	2	47			31,42	0,1	D	80	0	1	0,18		2,3			

01/01/2008	7.08.02.68	.	.											0	PANI,DDS					
st_name	p_rem	m	w_p	time_s	dist	azm	s_sec	w_s	ain	mx_amp	per	p_calc	p_std	cf	f_p_time	p_res	s_std	s_res	xmag	fmag
PANN	E	D	1	7.08.02.68			7,392	1		0,587	0,13				48					
PANE			1	7.08.02.68			7,392	1		0,721	0,3				48					
PANV	I	C	1	7.08.02.69			7,386	1		0,5	0,35				48					
DDSV			2	7.08.04.68			10,55	2		0,355	0,22				48					
DDSE			2	7.08.04.69			10,55	2		0,72	0,14				48					
DDSN			2	7.08.04.69			10,55	2		0,968	0,1				48					

02/01/2008	3.18.58.13	46.4130	10.5900	5,3		2,2	242	49	6,7	352	16	13	D	0,8	0	PEJO (TN)				M 1.2(S)	
st_name	p_rem	m	w_p	time_s	dist	azm	s_sec	w_s	ain	mx_amp	per	p_calc	p_std	cf	f_p_time	p_res	s_std	s_res	xmag	fmag	
CARE	i	c	0	3.18.59.78	0,1	159	61,17	1	179			1,68	0,1	C	40	0	0,5	-0,27		2	
OZOL	i	c	0	3.19.04.30	27,6	95	8,99	2	110			5,01	0,1	C	46	1,57	1	2,29		2,1	
RNI	e		2	3.19.06.42	49,7	186			101			8,67	1		44	0,04		0		2	

02/01/2008	3.22.24.52	.	.											0	CARE					
st_name	p_rem	m	w_p	time_s	dist	azm	s_sec	w_s	ain	mx_amp	per	p_calc	p_std	cf	f_p_time	p_res	s_std	s_res	xmag	fmag
CARV	I	C	1	3.22.24.52			25,87	1		10,5	0,13				19					
CARN			1	3.22.24.52			25,87	1		7,65	0,03				19					
CARE	I	C	1	3.22.24.52			25,87	1		7,87	0,06				19					

02/01/2008	21.18.53.67	45.4491	9.6948	10		2,9	87	4	99	355	17	99	D	0,26	0	SERGNANO (CR)			M 2.4(I)		
st_name	p_rem	m	w_p	time_s	dist	azm	s_sec	w_s	ain	mx_amp	per	p_calc	p_std	cf	f_p_time	p_res	s_std	s_res	xmag	fmag	
RNI	i	c	0	21.19.09.74	100	46	20,09	3	96			17,18	0,11	C	99	-4,01	0,99	-7,09		2,8	
VAR	e		2	21.19.11.52	107,3	61			95			18,43	0,99		96	-3,47		0		2,7	
DDS	i	c	1	21.19.15.26	130,1	63			59			22,1	0,57	C	80	-3,51		0		2,5	
CARE	e		2	21.19.16.82	141,6	33			59			23,78	0,99		104	-3,72		0		2,7	
PANI	i	c	1	21.19.18.34	149,1	58			59			24,88	0,57	C	81	-3,25		0		2,4	
OZOL	e		2	21.19.18.97	156,7	42	36,42	3	59			26,01	0,99		97	-3,68	0,99	-6,6		2,6	

03/01/2008	4.46.46.25	.	.											0	RNI							
st_name	p_rem	m	w_p	time_s	dist	azm	s_sec	w_s	ain	mx_amp	per	p_calc	p_std	cf	f_p_time	p_res	s_std	s_res	xmag	fmag		
RNIE			2	4.46.46.25			48,07	2		3,82	0,06				16							
RNIN			2	4.46.46.25			48,07	2		5,21	0,06				16							
RNIV			2	4.46.46.25			48,07	2		4,89	0,06				16							

03/01/2008	4.47.30.10	.	.											0	RNI				DOUBLE EVENT			
st_name	p_rem	m	w_p	time_s	dist	azm	s_sec	w_s	ain	mx_amp	per	p_calc	p_std	cf	f_p_time	p_res	s_std	s_res	xmag	fmag		
RNIV			2	4.47.30.10			31,83	2		5,01	0,06											
RNIE			2	4.47.30.10			31,83	2		5,34	0,08											
RNIN			2	4.47.30.10			31,83	2		6,68	0,08											

QUATERLY BULLETTIN *January-March 2008*

DATE	TIME	Geogr. Coord.		DEPTH	Magnitude		LOCATION ERRORS							RMS	TYPE	EPICENTRAL AREA	NOTES
DD-MM-YY	HH/MM/SS	LAT N	LON E	h (Km)	MA	MD	az1	dp1	se1	az2	dp2	se2	q				

04/01/2008	22.18.05.42	.	.											0	VAR					
st_name	p_rem	m	w_p	time_s	dist	azm	s_sec	w_s	ain	mx_amp	per	p_calc	p_std	cf	f_p_time	p_res	s_std	s_res	xmag	fmag
VARV	E	D	1	22.18.05.42			7,44	1		10,2	0,06				17					
VARN			1	22.18.05.42			7,44	1		12,9	0,06				17					
VARE			1	22.18.05.42			7,44	1		23,6	0,06				17					

06/01/2008	0.55.02.32	.	.											0	RNI					
st_name	p_rem	m	w_p	time_s	dist	azm	s_sec	w_s	ain	mx_amp	per	p_calc	p_std	cf	f_p_time	p_res	s_std	s_res	xmag	fmag
RNIV			2	0.55.02.32			2,659	2		9,01	0,05				10					
RNIN			2	0.55.02.32			2,659	2		14,9	0,05				10					
RNIE			2	0.55.02.32			2,659	2		18,7	0,05				10					

06/01/2008	21.24.02.57	45.9380	10.8610		7,8		1,8	296	20	99	189	38	99	D	0,66	0	ARCO (TN)				
st_name	p_rem	m	w_p	time_s	dist	azm	s_sec	w_s	ain	mx_amp	per	p_calc	p_std	cf	f_p_time	p_res	s_std	s_res	xmag	fmag	
VAR	i	d	0	21.24.05.05	10	0	7,11	2	135			2,42	0,11	D	33	-0,25	0,99	-0,24			
RNI	i	d	1	21.24.06.05	34,5	322	8,86	2	106			6,14	0,57	D	36	-2,85	0,99	-4,9		1,8	
DDS	e		2	21.24.07.45	27,6	55	10,8	2	110			5,02	0,99		21	-0,34	0,99	-0,98		1,3	

07/01/2008	14.57.25.45	.	.											0	OZOL					
st_name	p_rem	m	w_p	time_s	dist	azm	s_sec	w_s	ain	mx_amp	per	p_calc	p_std	cf	f_p_time	p_res	s_std	s_res	xmag	fmag
OZOV			2	14.57.25.45			26,75	2		5,27	0,06				12					
OZON			2	14.57.25.45			26,75	2		6,69	0,06				12					
OZOE			2	14.57.25.45			26,75	2		4,99	0,13				12					

08/01/2008	17.56.45.59	44.6990	10.4750	8,51		2,5	127	26	39	242	41	28	D	0,48	0	MONTECCHIO EM. (RE)							
st_name	p_rem	m	w_p	time_s	dist	azm	s_sec	w_s	ain	mx_amp	per	p_calc	p_std	cf	f_p_time	p_res	s_std	s_res	xmag	fmag			
RNI	e		2	17.57.09.83	142,9	5	29,05	3	59			24,11	1		66	-0,04	2	0,24		2,2			
DDS	e		2	17.57.09.92	142,7	23	31,46	3	59			24,08	1		64	0,11	2	2,75		2,2			
PANI	e		2	17.57.12.76	164,7	24	34,45	3	59			27,31	1		68	-0,31	2	-0,06		2,2			
OZOL	e	d	1	17.57.16.99	194,7	13	41,31	2	47			31,19	0,5	D	63	0,07	1	-0,05		2,1			

08/01/2008	19.53.24.25	.	.											10						
st_name	p_rem	m	w_p	time_s	dist	azm	s_sec	w_s	ain	mx_amp	per	p_calc	p_std	cf	f_p_time	p_res	s_std	s_res	xmag	fmag
DDS	e		2	19.53.24.25											102					
VAR	e	c	2	19.53.24.67			53,25	2							111					
OZOL	e		2	19.53.32.08											110					

08/01/2008	21.41.15.42	46.5750	10.1570	2		2,8	131	10	99	227	31	99	D	0,23	0	LIVIGNO (SO)				M 2.5(S)	
st_name	p_rem	m	w_p	time_s	dist	azm	s_sec	w_s	ain	mx_amp	per	p_calc	p_std	cf	f_p_time	p_res	s_std	s_res	xmag	fmag	
CARE	e		2	21.41.22.94	61,7	109	29,02	3	99			10,68	0,15		87	-3,29	0,55	-5,6		2,7	
OZOL	e	c	1	21.41.27.56	88,6	105	37,12	3	96			15,24	7,31	C	94	-3,18	0,55	-5,53		2,7	
RNI	i	c	0	21.41.28.15	87,6	143	38,06	3	97			15,07	1,46	C	86	-2,43	0,55	-4,31		2,6	
VAR	e		1	21.41.32.88	114,3	139			95			19,61	7,31		80	-2,23		0		2,5	
PANI	i	c	1	21.41.33.94	124,3	119			59			21,24	7,31	C	93	-2,95		0		2,6	
DDS	e		2	21.41.34.60	126,1	130	49,11	3	59			21,5	0,15		78	-2,52	0,55	-4,89		2,4	

QUATERLY BULLETTIN *January-March 2008*

DATE	TIME	Geogr. Coord.		DEPTH	Magnitude		LOCATION ERRORS						RMS	TYPE	EPICENTRAL AREA	NOTES
DD-MM-YY	HH/MM/SS	LAT N	LON E	h (Km)	MA	MD	az1	dp1	se1	az2	dp2	se2	q			

09/01/2008	1.25.01.19	44.7081	10.4590	10		2,7	285	6	99	19	35	99	D	0,41	0	MONTECCHIO EM. (RE)					
st_name	p_rem	m	w_p	time_s	dist	azm	s_sec	w_s	ain	mx_amp	per	p_calc	p_std	cf	f_p_time	p_res	s_std	s_res	xmag	fmag	
VAR	i	d	1	1.25.23.64	138,7	14	42,46	3	59			23,36	0,57	D	59	0,27	0,99	0,75		2,1	
RNI	i	c	1	1.25.25.00	152	5	44,26	3	59			25,31	0,57	C	83	-0,34	0,99	-0,95		2,5	
DDS	e		2	1.25.25.20	151,5	22	46,41	3	59			25,24	0,99		77	-0,04	0,99	1,37		2,4	
PANI	e		1	1.25.28.03	173,4	23	49,41	3	47			28,35	0,57		85	-0,41	0,99	-1,32		2,5	
OZOL	i	d	2	1.25.32.31	203,7	13	56,85	3	47			32,14	0,99	D	87	0,16	0,99	-0,48		2,4	

09/01/2008	7.25.40.58	.	.											0	OZOL					
st_name	p_rem	m	w_p	time_s	dist	azm	s_sec	w_s	ain	mx_amp	per	p_calc	p_std	cf	f_p_time	p_res	s_std	s_res	xmag	fmag
OZON			1	7.25.40.58			40,85	2		12,4	0,05				10					
OZOE	E	D	1	7.25.40.58			40,85	2		16,9	0,1				10					
OZOV	I	D	1	7.25.40.58			40,85	2		8,58	0,06				10					

09/01/2008	10.45.53.76	.	.											0	DDS,VAR							
st_name	p_rem	m	w_p	time_s	dist	azm	s_sec	w_s	ain	mx_amp	per	p_calc	p_std	cf	f_p_time	p_res	s_std	s_res	xmag	fmag		
DDSE			1	10.45.53.76			55,62	1		13,7	0,13				23							
DDSV	I	C	1	10.45.53.76			55,62	1		8,71	0,16				23							
DDSN			1	10.45.53.76			55,62	1		14,6	0,06				23							
VARE			1	10.45.55.22			58,09	1		5,23	0,06				22							
VARN			1	10.45.55.22			58,09	1		6,09	0,1				22							
VARV	I	C	1	10.45.55.22			58,09	1		3,7	0,1				22							

09/01/2008	10.52.11.46	.	.											0	DDS,VAR					
st_name	p_rem	m	w_p	time_s	dist	azm	s_sec	w_s	ain	mx_amp	per	p_calc	p_std	cf	f_p_time	p_res	s_std	s_res	xmag	fmag
DDSN			1	10.52.11.46			13,43	1		15,9	0,05				25					
DDSV	I	D	1	10.52.11.46			13,43	1		10,2	0,11				25					
DDSE			1	10.52.11.46			13,43	1		16,8	0,1				25					
VARV			1	10.52.12.98			15,87	1		4,5	0,1				26					
VARE			1	10.52.12.98			15,87	1		6,75	0,05				26					
VARN			1	10.52.12.98			15,87	1		9,31	0,03				26					

11/01/2008	13.09.22.49	.	.											0	PAGA				DOUBLE EVENT			
st_name	p_rem	m	w_p	time_s	dist	azm	s_sec	w_s	ain	mx_amp	per	p_calc	p_std	cf	f_p_time	p_res	s_std	s_res	xmag	fmag		
PAGV	I	C	1	13.09.22.49			24,64	1		15,1	0,02											

11/01/2008	14.42.51.99	.	.											10		DOUBLE EVENT				
st_name	p_rem	m	w_p	time_s	dist	azm	s_sec	w_s	ain	mx_amp	per	p_calc	p_std	cf	f_p_time	p_res	s_std	s_res	xmag	fmag
VAR	e	c	2	14.42.51.99			70,94	3							59					
RNI	e		1	14.42.53.05			72,7	3							64					
OZOL	e		3	14.43.00.41											66					

QUATERLY BULLETTIN *January-March 2008*

DATE	TIME	Geogr. Coord.		DEPTH	Magnitude		LOCATION ERRORS						RMS	TYPE	EPICENTRAL AREA	NOTES
DD-MM-YY	HH/MM/SS	LAT N	LON E	h (Km)	MA	MD	az1	dp1	se1	az2	dp2	se2	q			

11/01/2008	22.43.24.91	.	.											0	VAR,DDS					
st_name	p_rem	m	w_p	time_s	dist	azm	s_sec	w_s	ain	mx_amp	per	p_calc	p_std	cf	f_p_time	p_res	s_std	s_res	xmag	fmag
VARN			1	22.43.24.91			26,81	1		16,7	0,06				15					
VARE			1	22.43.24.91			26,81	1		15,6	0,03				15					
VARV	I	C	1	22.43.24.91			26,81	1		9,68	0,06				15					
DDSV	I	C	1	22.43.25.73			28,21	1		3,26	5,7				15					
DDSE			1	22.43.25.73			28,21	1		3,48	0,21				15					
DDSN			1	22.43.25.73			28,21	1		3,42	0,06				15					

12/01/2008	0.57.12.79	.	.											0	OZOL,CARE					
st_name	p_rem	m	w_p	time_s	dist	azm	s_sec	w_s	ain	mx_amp	per	p_calc	p_std	cf	f_p_time	p_res	s_std	s_res	xmag	fmag
OZOE	I	C	1	0.57.12.79			14,64	2		2,5	0,11				13					
OZOV		C	1	0.57.12.79			14,64	2		1,81	0,1				13					
OZON	I	C	1	0.57.12.79			14,64	2		2,7	0,16				13					
CARE	I	C	1	0.57.12.93			14,85	1		4,14	0,05				14					
CARN			1	0.57.12.93			14,85	1		4,44	0,02				14					
CARV	I	D	1	0.57.12.93			14,85	1		7,32	0,06				14					

13/01/2008	8.08.14.50	45.5940	10.5940	25		2,4	302	6	13	212	6	57	D	0,66	0	TOSCOLANO MAD. (BS)				
st_name	p_rem	m	w_p	time_s	dist	azm	s_sec	w_s	ain	mx_amp	per	p_calc	p_std	cf	f_p_time	p_res	s_std	s_res	xmag	fmag
VAR	i	d	1	8.08.21.63	10,6	35	27,4	2	159			5,46	0,92	D	62	1,47	1,22	2,76	2,4	
RNI	i	d	1	8.08.22.86	30	329	29,29	2	131			7,12	1,3	D	53	1,07	1,67	1,75	2,2	
DDS	e		2	8.08.24.75	32,1	63			129			7,34	1,67		45	2,78		0	2,1	

14/01/2008	8.39.39.67	45.8890	10.9380	12,5		1,7	194	39	14	322	38	5,9	D	0,35	0	RIVA DEL GARDA (TN)							
st_name	p_rem	m	w_p	time_s	dist	azm	s_sec	w_s	ain	mx_amp	per	p_calc	p_std	cf	f_p_time	p_res	s_std	s_res	xmag	fmag			
VAR	i	c	0	8.39.42.16	0,1	254	44,15	2	179			2,18	0,1	C	28	-0,01	1	0,06	1,6				
DDS	i	c	0	8.39.43.65	23,2	75	46,66	2	119			4,52	0,1	C	24	-0,7	1	-1,32	1,4				
RNI	e		2	8.39.44.66	27,4	308	48,56	2	115			5,17	1		29	-0,34	1	-0,58	1,6				

14/01/2008	17.06.48.27	.	.											0	VAR					
st_name	p_rem	m	w_p	time_s	dist	azm	s_sec	w_s	ain	mx_amp	per	p_calc	p_std	cf	f_p_time	p_res	s_std	s_res	xmag	fmag
VARE			1	17.06.48.27			50,35	1		7,94	0,05				14					
VARN			1	17.06.48.27			50,35	1		7,89	0,05				14					
VARV	E	C	1	17.06.48.27			50,35	1		5,13	0,08				14					

16/01/2008	15.07.02.70	45.8890	10.7370	7		2,7	0	3	99	93	40	99	D	0,21	0	BEZZECA (TN)							
st_name	p_rem	m	w_p	time_s	dist	azm	s_sec	w_s	ain	mx_amp	per	p_calc	p_std	cf	f_p_time	p_res	s_std	s_res	xmag	fmag			
RNI	i	c	0	15.07.05.30	10	0				135		2,42	0,11	C	75	2,65		0		2,7			
DDS	e		2	15.07.08.77	44	91				103		7,71	0,99			1		0					
PANI	e		2	15.07.11.35	58	72				100		10,06	0,99			1,24		0					

17/01/2008	8.45.39.78	.	.											0	OZOL					
st_name	p_rem	m	w_p	time_s	dist	azm	s_sec	w_s	ain	mx_amp	per	p_calc	p_std	cf	f_p_time	p_res	s_std	s_res	xmag	fmag
OZOV	I	C	1	8.45.39.78			40,85	1		11,7	0,53				23					
OZON			1	8.45.39.78			40,85	1		29,3	0,43				23					
OZOE	E	C	1	8.45.39.78			40,85	1		26,4	0,22				23					

QUATERLY BULLETTIN *January-March 2008*

DATE	TIME	Geogr. Coord.		DEPTH	Magnitude		LOCATION ERRORS						RMS	TYPE	EPICENTRAL AREA	NOTES
DD-MM-YY	HH/MM/SS	LAT N	LON E	h (Km)	MA	MD	az1	dp1	se1	az2	dp2	se2	q			

17/01/2008	10.44.36.19	.	.											0	PAGA					
st_name	p_rem	m	w_p	time_s	dist	azm	s_sec	w_s	ain	mx_amp	per	p_calc	p_std	cf	f_p_time	p_res	s_std	s_res	xmag	fmag
PAGV	I	C	1	10.44.36.19			37,73	1		12,2	0,02				17					

19/01/2008	3.13.46.56	.	.											0	PANI					
st_name	p_rem	m	w_p	time_s	dist	azm	s_sec	w_s	ain	mx_amp	per	p_calc	p_std	cf	f_p_time	p_res	s_std	s_res	xmag	fmag
PANV	I	D	1	3.13.46.56			47,01	1		5,7	0				11					
PANN	I	D	1	3.13.46.56			47,01	1		3,34	0,03				11					
PANE			1	3.13.46.56			47,01	1		5,3	0,05				11					

19/01/2008	15.47.42.18	.	.											0	PANI					
st_name	p_rem	m	w_p	time_s	dist	azm	s_sec	w_s	ain	mx_amp	per	p_calc	p_std	cf	f_p_time	p_res	s_std	s_res	xmag	fmag
PANV	E	D	1	15.47.42.18			42,47	2		18,6	0				10					
PANN	E	D	1	15.47.42.18			42,47	2		11,7	0,03				10					
PANE	E	D	1	15.47.42.18			42,47	2		18,1	0,05				10					

19/01/2008	16.45.26.98	.	.											0	PANI					
st_name	p_rem	m	w_p	time_s	dist	azm	s_sec	w_s	ain	mx_amp	per	p_calc	p_std	cf	f_p_time	p_res	s_std	s_res	xmag	fmag
PANE			1	16.45.26.98			27,54	2		7,34	0,05				10					
PANV	E	D	1	16.45.26.98			27,54	2		7,63	0,05				10					
PANN	E	D	1	16.45.26.98			27,54	2		4,99	0,03				10					

19/01/2008	16.47.47.77	.	.											0	PANI					
st_name	p_rem	m	w_p	time_s	dist	azm	s_sec	w_s	ain	mx_amp	per	p_calc	p_std	cf	f_p_time	p_res	s_std	s_res	xmag	fmag
PANN			2	16.47.47.77			48,54	2		4,04	0,02				10					
PANE			2	16.47.47.77			48,54	2		8,18	0,02				10					
PANV			2	16.47.47.77			48,54	2		13,9	0,03				10					

19/01/2008	23.20.14.25	.	.											0	PANI					
st_name	p_rem	m	w_p	time_s	dist	azm	s_sec	w_s	ain	mx_amp	per	p_calc	p_std	cf	f_p_time	p_res	s_std	s_res	xmag	fmag
PANV	I	C	1	23.20.14.25			14,8	1		7,25	0,02				11					
PANN	I	D	1	23.20.14.25			14,8	1		4,93	0,02				11					
PANE	E	D	1	23.20.14.25			14,8	1		6,74	0,02				11					

20/01/2008	0.08.50.71	.	.											0	PANI					
st_name	p_rem	m	w_p	time_s	dist	azm	s_sec	w_s	ain	mx_amp	per	p_calc	p_std	cf	f_p_time	p_res	s_std	s_res	xmag	fmag
PANV			2	0.08.50.71			51,4	2		5,89	0,03				11					
PANN			2	0.08.50.71			51,4	2		4,19	0,06				11					
PANE			2	0.08.50.71			51,4	2		5,06	0,03				11					

20/01/2008	4.36.06.90	.	.											0	PANI					
st_name	p_rem	m	w_p	time_s	dist	azm	s_sec	w_s	ain	mx_amp	per	p_calc	p_std	cf	f_p_time	p_res	s_std	s_res	xmag	fmag
PANE			2	4.36.06.90			7,996	2		2,36	0,05				14					
PANV			2	4.36.06.90			7,996	2		4,14	0,05				14					
PANN			2	4.36.06.90			7,996	2		2,21	0,02				14					

QUATERLY BULLETTIN *January-March 2008*

DATE	TIME	Geogr. Coord.		DEPTH	Magnitude		LOCATION ERRORS							RMS	TYPE	EPICENTRAL AREA	NOTES
DD-MM-YY	HH/MM/SS	LAT N	LON E	h (Km)	MA	MD	az1	dp1	se1	az2	dp2	se2	q				

20/01/2008	6.32.52.71	.	.											0	PANI					
st_name	p_rem	m	w_p	time_s	dist	azm	s_sec	w_s	ain	mx_amp	per	p_calc	p_std	cf	f_p_time	p_res	s_std	s_res	xmag	fmag
PANV			2	6.32.52.71			53,39	2		9,21	0,02				11					
PANN			2	6.32.52.71			53,39	2		4,3	0				11					
PANE			2	6.32.52.71			53,39	2		8,29	0				11					

20/01/2008	8.24.56.67	.	.											0	PAGA							
st_name	p_rem	m	w_p	time_s	dist	azm	s_sec	w_s	ain	mx_amp	per	p_calc	p_std	cf	f_p_time	p_res	s_std	s_res	xmag	fmag		
PAGV		2		8.24.56.67			57,06	2		10,8	0,02				10							

20/01/2008	11.22.53.71	.	.											0	PAGA					
st_name	p_rem	m	w_p	time_s	dist	azm	s_sec	w_s	ain	mx_amp	per	p_calc	p_std	cf	f_p_time	p_res	s_std	s_res	xmag	fmag
PAGV	I	D	1	11.22.53.71			54,55	2		9,58	0,08				10					

21/01/2008	6.27.04.08	.	.											0	OZOL					
st_name	p_rem	m	w_p	time_s	dist	azm	s_sec	w_s	ain	mx_amp	per	p_calc	p_std	cf	f_p_time	p_res	s_std	s_res	xmag	fmag
OZON		2		6.27.04.08			5,73	2		13,6	0,03				12					
OZOE		2		6.27.04.08			5,73	2		24,8	0,05				12					
OZOV		2		6.27.04.08			5,73	2		7,73	0,05				12					

21/01/2008	9.56.29.97	44.3101	10.6411	9,67			279	0	75	9	0	99	D	0,19	0	PALAGANO (MO)			M 2.6(I)	
st_name	p_rem	m	w_p	time_s	dist	azm	s_sec	w_s	ain	mx_amp	per	p_calc	p_std	cf	f_p_time	p_res	s_std	s_res	xmag	fmag
VAR	e		1	9.56.57.98	179,7	6				47		29,18	0,52			2,05		0		
DDS	e		2	9.56.59.38	189,4	13				47		30,39	1,04			2,25		0		
PANI	e		2	9.57.02.07	210,6	15				47		33,04	1,04			2,25		0		
OZOL	e		3	9.57.06.70	244,8	7	38,95	3	47			37,31	2,18			2,7	0,99	5,73		
CARE	e		2	9.57.06.73	245	1	37,14	3	47			37,34	1,07			2,53	0,99	3,58		

21/01/2008	11.02.53.82	44.1386	10.4981	3,97		3,2	94	6	47	359	43	14	D	0,51	0	FOSCIANDORA (LU)			M 3.2(I)	
st_name	p_rem	m	w_p	time_s	dist	azm	s_sec	w_s	ain	mx_amp	per	p_calc	p_std	cf	f_p_time	p_res	s_std	s_res	xmag	fmag
VAR	e		1	11.03.25.09	190,3	9	52,03	3	47			31,16	0,5		125	-0,1	2	2,37		2,8
DDS	e		2	11.03.26.21	201	15			47			32,51	1		146	-0,31		0		2,9
RNI	e		2	11.03.26.51	205	3	53,4	3	47			33	1		127	-0,54	2	0,44		2,8
PANI	e		1	11.03.28.99	222,5	17	57,03	4	47			35,19	0,5		114	-0,26	0,99	0,16		2,6
CARE	e		2	11.03.33.50	254,5	3	64,02	3	47			39,19	1		164	0,18	2	-0,11		3
OZOL	i	d	1	11.03.33.78	255,4	10	66,01	3	47			39,31	0,5	D	150	0,51	2	1,96		2,9

21/01/2008	16.40.32.88	46.8325	9.2886	10		3,6	8	13	99	102	17	99	D	0,7	0	SURSELVA [CH]			MAIN M 4.0(S)	
st_name	p_rem	m	w_p	time_s	dist	azm	s_sec	w_s	ain	mx_amp	per	p_calc	p_std	cf	f_p_time	p_res	s_std	s_res	xmag	fmag
CARE	i	d	1	16.40.52.73	113,4	108	64,74	3	95			19,46	0,57	D	214	-3,4	0,99	-6,6		3,5
RNI	i	d	1	16.40.56.58	133,1	129	72,17	3	59			22,53	0,57	D	192	-2,75	0,99	-4,87		3,4
OZOL	i	d	1	16.40.57.04	140,3	105	73,37	3	59			23,6	0,57	D	197	-3,29	0,99	-5,45		3,4
VAR	i	d	1	16.41.00.90	160,4	129			59			26,56	0,57	D	192	-2,44		0		3,3
PANI	i	d	2	16.41.03.10	175,1	115			47			28,57	0,99	D	191	-2,33		0		3,3
DDS	e	d	2	16.41.03.20	175	123	24,04	3	47			28,55	0,99	D	190	-2,17	0,99	-3,74		3,3

QUATERLY BULLETTIN *January-March 2008*

DATE	TIME	Geogr. Coord.		DEPTH	Magnitude		LOCATION ERRORS						RMS	TYPE	EPICENTRAL AREA	NOTES
DD-MM-YY	HH/MM/SS	LAT N	LON E	h (Km)	MA	MD	az1	dp1	se1	az2	dp2	se2	q			

21/01/2008	16.47.00.77	.	.											10	THUSIS [CH]	AFTER M 2.5(S)				
st_name	p_rem	m	w_p	time_s	dist	azm	s_sec	w_s	ain	mx_amp	per	p_calc	p_std	cf	f_p_time	p_res	s_std	s_res	xmag	fmag
CARE	i	d	1	16.47.00.77			13,02	3							53					
RNI	e		1	16.47.04.82			19,58	3							58					
OZOL	e		3	16.47.05.54			22,84	3												

21/01/2008	19.41.39.77	.	.										0	RNI						
st_name	p_rem	m	w_p	time_s	dist	azm	s_sec	w_s	ain	mx_amp	per	p_calc	p_std	cf	f_p_time	p_res	s_std	s_res	xmag	fmag
RNIV	I	D	1	19.41.39.77			41,19	1		9,83	0,1				23					
RNIN	E	D	1	19.41.39.77			41,19	1		33	0,11				23					
RNIE			1	19.41.39.77			41,19	1		38,4	0,13				23					

22/01/2008	6.17.22.99	.	.										0	OZOL						
st_name	p_rem	m	w_p	time_s	dist	azm	s_sec	w_s	ain	mx_amp	per	p_calc	p_std	cf	f_p_time	p_res	s_std	s_res	xmag	fmag
OZOE			2	6.17.22.99			24,17	3		2,57	0,06				10					
OZOV			2	6.17.22.99			24,17	3		1,12	0,05				10					
OZON			2	6.17.22.99			24,17	3		2,57	0,1				10					

22/01/2008	11.31.39.72	.	.											10	ZONA ASCOLI PICENO	M 3.2(I)				
st_name	p_rem	m	w_p	time_s	dist	azm	s_sec	w_s	ain	mx_amp	per	p_calc	p_std	cf	f_p_time	p_res	s_std	s_res	xmag	fmag
DDSN			2	11.31.39.72			77,69	3		6,2	0,22				179					
DDSV			2	11.31.39.72			77,7	3		3,08	2,4				179					
DDSE			2	11.31.39.72			77,69	3		4,67	0,51				179					
VARN			1	11.31.40.10			78,45	1		17,9	0,16				179					
VARV	I	D	1	11.31.40.10			78,46	1		6,48	0,14				179					
VARE			1	11.31.40.10			78,45	1		10,7	0,16				179					
RNIE			2	11.31.43.58			85,06	2		9,19	0,18				179					
RNIN			2	11.31.43.58			85,06	2		6,66	0,14				179					
RNIV			2	11.31.43.58			85,06	2		2,02	0,38				179					
OZOV	E	D	1	11.31.51.51			97,68	2		3,73	0,37				177					
OZON			1	11.31.51.51			97,68	2		8,48	0,34				177					
OZOE			1	11.31.51.51			97,68	2		6,12	0,19				177					

22/01/2008	23.20.43.66	.	.										0	CARE						
st_name	p_rem	m	w_p	time_s	dist	azm	s_sec	w_s	ain	mx_amp	per	p_calc	p_std	cf	f_p_time	p_res	s_std	s_res	xmag	fmag
CARE	I	C	0	23.20.43.66			45,06	1		34,4	0,05				20					
CARN	I	D	0	23.20.43.66			45,06	1		31,6	0,05				20					
CARV	I	C	0	23.20.43.66			45,06	1		37,3	0,05				20					

23/01/2008	3.40.15.81	.	.										0	VAR						
st_name	p_rem	m	w_p	time_s	dist	azm	s_sec	w_s	ain	mx_amp	per	p_calc	p_std	cf	f_p_time	p_res	s_std	s_res	xmag	fmag
VARE			1	3.40.15.81			17,88	1		27,4	0,08				16					
VARN			1	3.40.15.81			17,88	1		16,4	0,06				16					
VARV	I	D	1	3.40.15.81			17,88	1		14,5	0,08				16					

QUATERLY BULLETTIN *January-March 2008*

DATE	TIME	Geogr. Coord.		DEPTH	Magnitude		LOCATION ERRORS							RMS	TYPE	EPICENTRAL AREA	NOTES
DD-MM-YY	HH/MM/SS	LAT N	LON E	h (Km)	MA	MD	az1	dp1	se1	az2	dp2	se2	q				

24/01/2008	4.42.32.95	46.6931	13.2753	10		2,6	194	4	99	100	37	99	D	1,65	0	SPITTAL [A]					
st_name	p_rem	m	w_p	time_s	dist	azm	s_sec	w_s	ain	mx_amp	per	p_calc	p_std	cf	f_p_time	p_res	s_std	s_res	xmag	fmag	
PANI	i	d	0	4.42.58.93	161,5	248	82,18	3	59			26,72	0,11	D	78	4,15	0,99	6,42		2,4	
OZOL	i	d	2	4.42.59.70	172,1	263			47			28,19	0,99	D	72	3,48		0		2,3	
DDS	e		2	4.43.01.15	179,9	244	26,89	3	47			29,16	0,99		72	3,91	0,87	6,75		2,2	
CARE	e		2	4.43.03.31	199	265	32,1	3	47			31,56	0,99		70	3,56	0,14	7,5		2,2	

24/01/2008	8.55.17.74	.	.											0	OZOL					
st_name	p_rem	m	w_p	time_s	dist	azm	s_sec	w_s	ain	mx_amp	per	p_calc	p_std	cf	f_p_time	p_res	s_std	s_res	xmag	fmag
OZOV	I	C	1	8.55.17.74			19,64	1		18,9	0,53				20					
OZON			1	8.55.17.74			19,64	1		53,7	0,42				20					
OZOE			1	8.55.17.74			19,64	1		35,5	0,51				20					

24/01/2008	16.56.36.12	.	.											0	VAR					
st_name	p_rem	m	w_p	time_s	dist	azm	s_sec	w_s	ain	mx_amp	per	p_calc	p_std	cf	f_p_time	p_res	s_std	s_res	xmag	fmag
VARV			2	16.56.36.12			38,92	2							18					
VARN			2	16.56.36.12			38,92	2							18					
VARE			2	16.56.36.12			38,92	2							18					

25/01/2008	5.33.50.61	.	.											10	APPENNINO FORLIVESE	M 2.5(I)				
st_name	p_rem	m	w_p	time_s	dist	azm	s_sec	w_s	ain	mx_amp	per	p_calc	p_std	cf	f_p_time	p_res	s_std	s_res	xmag	fmag
VAR	i	c	1	5.33.52.09											78					
PANI	e		2	5.33.53.64			77,42	3							93					
OZOL	e		2	5.34.00.15			30,42	3							95					

25/01/2008	8.23.23.54	45.6735	10.4665	9,16		2,4	257	4	28	348	13	36	D	1,73	0	VOBARNO (BS)					
st_name	p_rem	m	w_p	time_s	dist	azm	s_sec	w_s	ain	mx_amp	per	p_calc	p_std	cf	f_p_time	p_res	s_std	s_res	xmag	fmag	
VAR	i	c	1	8.23.30.00	43,2	51				102		7,54	0,77	C	54	12,85		0		2,2	
PANI	e		2	8.23.34.11	85,2	52	53,27	3	96			14,64	2,29		48	9,89	2,05	17,6		2	
OZOL	e		2	8.23.38.82	101,8	26				95		17,47	1,67		56	11,79		0		2,2	

26/01/2008	15.32.42.67	.	.											10	NORTHERN ITALY			M 2.7(S)		
st_name	p_rem	m	w_p	time_s	dist	azm	s_sec	w_s	ain	mx_amp	per	p_calc	p_std	cf	f_p_time	p_res	s_std	s_res	xmag	fmag
DDSV			2	15.32.42.67			67,33	2		0,448	1,3				102					
DDSE			2	15.32.42.67			67,33	2		0,729	0,5				102					
DDSN			2	15.32.42.67			67,33	2		0,614	0,5				102					
OZOV			2	15.32.43.28			68,84	2		0,309	0,21				102					
OZOE			2	15.32.43.28			68,84	2		0,491	0,34				102					
OZON			2	15.32.43.28			68,84	2		0,748	0,34				102					

26/01/2008	18.39.52.06	.	.											0	CARE					
st_name	p_rem	m	w_p	time_s	dist	azm	s_sec	w_s	ain	mx_amp	per	p_calc	p_std	cf	f_p_time	p_res	s_std	s_res	xmag	fmag
CARV			2	18.39.52.06			55,13	2		5,69	0,03				24					
CARN			2	18.39.52.06			55,13	2		5,32	0,08				24					
CARE			2	18.39.52.06			55,13	2		5,07	0,02				24					

QUATERLY BULLETTIN *January-March 2008*

DATE	TIME	Geogr. Coord.		DEPTH	Magnitude		LOCATION ERRORS						RMS	TYPE	EPICENTRAL AREA	NOTES
DD-MM-YY	HH/MM/SS	LAT N	LON E	h (Km)	MA	MD	az1	dp1	se1	az2	dp2	se2	q			

27/01/2008	11.20.19.40	.	.											10						
st_name	p_rem	m	w_p	time_s	dist	azm	s_sec	w_s	ain	mx_amp	per	p_calc	p_std	cf	f_p_time	p_res	s_std	s_res	xmag	fmag
RNIE			1	11.20.19.40			41,73	1		1,85	0,19				100					
RNIN			1	11.20.19.40			41,73	1		1,18	0,19				100					
RNIV	I	C	1	11.20.19.40			41,73	1		0,651	0,19				100					
VARV			2	11.20.20.02			43,02	2		0,476	0,22				102					
VARN			2	11.20.20.02			43,02	2		1,31	0,29				102					
VARE			2	11.20.20.02			43,02	2		1,13	0,22				102					

28/01/2008	20.56.33.39	45.7960	11.0380	13,9		2	173	15	99	78	19	99	D	0,21	0	ALA (TN)				
st_name	p_rem	m	w_p	time_s	dist	azm	s_sec	w_s	ain	mx_amp	per	p_calc	p_std	cf	f_p_time	p_res	s_std	s_res	xmag	fmag
VAR	i	c	0	20.56.36.45	25,2	333	38,95	2	112			4,64	1,8	C	46	-2,03	0,22	-3,23		2,1
PANI	e	c	1	20.56.40.12	52,4	25	45,06	3	101			9,12	0,14	C	30	-2,8	0,99	-5,03		1,6
RNI	e	c	2	20.56.40.18	51,4	320			101			8,95	0,28	C	30	-2,57		0		1,6
OZOL	e	c	1	20.56.45.41	86,5	0	54,18	2	97			14,89	0,17	C	32	-3,24	0,88	-6,1		1,6

28/01/2008	23.43.43.86	45.8210	10.9910	14		1,9	212	13	99	309	30	99	D	0,09	0	ALA (TN)					
st_name	p_rem	m	w_p	time_s	dist	azm	s_sec	w_s	ain	mx_amp	per	p_calc	p_std	cf	f_p_time	p_res	s_std	s_res	xmag	fmag	
VAR	i	c	0	23.43.46.58	10	0	48,65	2	135			2,42	0,11	C	31	0,08	0,99	0,1			
RNI	e	c	1	23.43.50.08	34,5	322	54,96	2	106			6,14	0,57	C	36	-0,03	0,99	-0,01		1,8	
PANI	e		3	23.43.50.62	48,6	44			102			8,48	0,99			-1,81		0			

30/01/2008	16.17.12.99	.	.											0	VAR					
st_name	p_rem	m	w_p	time_s	dist	azm	s_sec	w_s	ain	mx_amp	per	p_calc	p_std	cf	f_p_time	p_res	s_std	s_res	xmag	fmag
VARV	E	D	1	16.17.12.29			14,4	1		6,68	0,06				14					
VARN			1	16.17.12.29			14,4	1		8,06	0,06				14					
VARE			1	16.17.12.29			14,4	1		13,2	0,08				14					

31/01/2008	2.15.31.93	.	.											10						
st_name	p_rem	m	w_p	time_s	dist	azm	s_sec	w_s	ain	mx_amp	per	p_calc	p_std	cf	f_p_time	p_res	s_std	s_res	xmag	fmag
VARE			2	2.15.31.93			49,72	2		1,34	0,08				110					
VARV			2	2.15.31.93			49,72	2		0,751	0,1				110					
VARN			2	2.15.31.93			49,72	2		1,65	0,13				110					
RNIN			2	2.15.32.54			50,98	2		0,694	0,18				110					
RNIE			2	2.15.32.54			50,98	2		1,17	0,16				110					
RNIV			2	2.15.32.54			50,98	2		0,318	0,1				110					

31/01/2008	6.41.40.05	.	.											0	VAR					
st_name	p_rem	m	w_p	time_s	dist	azm	s_sec	w_s	ain	mx_amp	per	p_calc	p_std	cf	f_p_time	p_res	s_std	s_res	xmag	fmag
VARE			2	6.41.40.05			41,96	2		12,1	0,08				13					
VARN			2	6.41.40.05			41,96	2		8,69	0,06				13					
VARV			2	6.41.40.05			41,96	2		6,15	0,06				13					

31/01/2008	8.20.43.80	.	.											0	CARE					
st_name	p_rem	m	w_p	time_s	dist	azm	s_sec	w_s	ain	mx_amp	per	p_calc	p_std	cf	f_p_time	p_res	s_std	s_res	xmag	fmag
CARV			1	8.20.43.80			44,58	1							15					
CARE			1	8.20.43.80			44,58	1							15					
CARN			1	8.20.43.80			44,58	1							15					

QUATERLY BULLETTIN *January-March 2008*

DATE	TIME	Geogr. Coord.		DEPTH	Magnitude		LOCATION ERRORS							RMS	TYPE	EPICENTRAL AREA	NOTES
DD-MM-YY	HH/MM/SS	LAT N	Lon E	h (Km)	MA	MD	az1	dp1	se1	az2	dp2	se2	q				

31/01/2008	11.30.12.13	.	.												10		DOUBLE EVENT			
st_name	p_rem	m	w_p	time_s	dist	azm	s_sec	w_s	ain	mx_amp	per	p_calc	p_std	cf	f_p_time	p_res	s_std	s_res	xmag	fmag
VAR	e		2	11.30.12.13			31,9	3							44					
RNI	e	c	1	11.30.13.64			32,8	3							49					
OZOL	e	d	1	11.30.20.72			45,66	2							50					

31/01/2008	12.00.18.05	.	.											0	CARE					
st_name	p_rem	m	w_p	time_s	dist	azm	s_sec	w_s	ain	mx_amp	per	p_calc	p_std	cf	f_p_time	p_res	s_std	s_res	xmag	fmag
CARE	I	D	1	12.00.18.05			22,46	1		7,49	0,05				25					
CARV	I	D	1	12.00.18.05			22,46	1		7,79	0,11				25					
CARN	I	D	1	12.00.18.05			22,46	1		11,1	0,08				25					

31/01/2008	15.53.58.51	.	.											10	ALPI APUANE			M 2.4(l)		
st_name	p_rem	m	w_p	time_s	dist	azm	s_sec	w_s	ain	mx_amp	per	p_calc	p_std	cf	f_p_time	p_res	s_std	s_res	xmag	fmag
VAR	e		3	15.53.58.51			84,16	3							60					
RNI	e		3	15.54.00.30											66					
PANI	e		3	15.54.02.81																

04/02/2008	17.01.23.23	.	.											0	RNI					
st_name	p_rem	m	w_p	time_s	dist	azm	s_sec	w_s	ain	mx_amp	per	p_calc	p_std	cf	f_p_time	p_res	s_std	s_res	xmag	fmag
RNIN			1	17.01.23.23			24,4	2		25,4	0,14				11					
RNIE			1	17.01.23.23			24,4	2		32,1	0,11				11					
RNIV	I	C	1	17.01.23.23			24,4	2		8,12	0,08				11					

06/02/2008	6.16.54.87	45.8470	10.9010	22,3		1,4	39	0	99	309	40	99	D	0,37	0	RIVA DEL GARDA (TN)					
st_name	p_rem	m	w_p	time_s	dist	azm	s_sec	w_s	ain	mx_amp	per	p_calc	p_std	cf	f_p_time	p_res	s_std	s_res	xmag	fmag	
VAR	e	c	1	6.16.58.65	10	0	61,7	2	135			2,42	0,57	C	19	1,15	0,99	2,15			
RNI	i	c	0	6.17.00.77	34,5	322	5,27	2	106			6,14	0,11	C	19	-0,33	0,99	-0,69		1,2	

06/02/2008	6.45.26.24	.	.											0	PANI						
st_name	p_rem	m	w_p	time_s	dist	azm	s_sec	w_s	ain	mx_amp	per	p_calc	p_std	cf	f_p_time	p_res	s_std	s_res	xmag	fmag	
PANV	I	C	1	6.45.26.24			27,56	3		0,69	0,06				10						
PANN	I	C	1	6.45.26.24			27,56	3		0,8	0,27				10						
PANE			1	6.45.26.24			27,56	3		0,84	0,1				10						

07/02/2008	16.03.09.48	.	.											0	RNI					
st_name	p_rem	m	w_p	time_s	dist	azm	s_sec	w_s	ain	mx_amp	per	p_calc	p_std	cf	f_p_time	p_res	s_std	s_res	xmag	fmag
RNIV	E	D	1	16.03.09.48			10,49	1		30,3	0,06				13					
RNIE			1	16.03.09.48			10,49	1		94,8	0,16				13					
RNIN			1	16.03.09.48			10,49	1		84,9	0,13				13					

07/02/2008	18.22.26.50	45.9000	10.6610	13,3		1,6	337	0	6,4	247	30	22	D	0,11	0	STORO (TN)				
st_name	p_rem	m	w_p	time_s	dist	azm	s_sec	w_s	ain	mx_amp	per	p_calc	p_std	cf	f_p_time	p_res	s_std	s_res	xmag	fmag
RNI	i	d	1	18.22.29.16	9,4	343	31,53	2	138			2,41	0,5	D	27	-0,09	1	0,21		1,6
VAR	e		2	18.22.30.63	20,3	113			117			3,91	1		26	-0,01		0		1,5
CARE	e	d	1	18.22.36.90	58,4	3	44,61	2	100			10,14	0,5	D	22	0,08	1	-0,18		1,3

QUATERLY BULLETTIN *January-March 2008*

DATE	TIME	Geogr. Coord.		DEPTH	Magnitude		LOCATION ERRORS						RMS	TYPE	EPICENTRAL AREA	NOTES
DD-MM-YY	HH/MM/SS	LAT N	LON E	h (Km)	MA	MD	az1	dp1	se1	az2	dp2	se2	q			

07/02/2008	18.44.41.02	.	.											0	RNI,VAR							
st_name	p_rem	m	w_p	time_s	dist	azm	s_sec	w_s	ain	mx_amp	per	p_calc	p_std	cf	f_p_time	p_res	s_std	s_res	xmag	fmag		
RNIN			0	18.44.41.02			43,32	1		18,7	0,06				21							
RNIV	I	D	0	18.44.41.02			43,32	1		11,3	0,06				21							
RNIE			0	18.44.41.02			43,32	1		18,5	0,13				21							
VARV			2	18.44.42.52			46,46	2		2,23	0,1				21							
VARN			2	18.44.42.52			46,46	2		3,13	0,16				21							
VARE			2	18.44.42.52			46,46	2		2,9	0,19				21							

07/02/2008	21.46.18.64	.	.											0	RNI					
st_name	p_rem	m	w_p	time_s	dist	azm	s_sec	w_s	ain	mx_amp	per	p_calc	p_std	cf	f_p_time	p_res	s_std	s_res	xmag	fmag
RNIV	I	D	1	21.46.18.64			20,92	1		2,58	0,06				19					
RNIN			1	21.46.18.64			20,92	1		4,28	0,08				19					
RNIE			1	21.46.18.64			20,92	1		4,28	0,14				19					

08/02/2008	6.31.16.64	46.3423	13.1650	11,28			2,3	233	44	16	15	39	44	D	0,46	0	VENZONE (UD)			
st_name	p_rem	m	w_p	time_s	dist	azm	s_sec	w_s	ain	mx_amp	per	p_calc	p_std	cf	f_p_time	p_res	s_std	s_res	xmag	fmag
PANI	e		2	6.31.40.60	144,9	258	58,72	3	59			24,17	1		58	-0,38	2	-1,24		2,1
OZOL	e		1	6.31.43.51	162,7	273			59			26,78	0,5			-0,02		0		
VAR	e	c	2	6.31.46.16	184,4	253	68,44	3	47			29,58	1	C	71	-0,26	2	-1,21		2,2
CARE	e		2	6.31.47.15	190,3	274			47			30,31	1			-0,1		0		
RNI	e		2	6.31.49.25	200,4	259	72,06	3	47			31,58	1		49	0,8100	2	-1,18		1,8

09/02/2008	1.16.19.63	45.7820	10.6840	22,6			1,8	188	18	20	281	9	4,2	D	2,33	0	VALVESTINO (BS)			
st_name	p_rem	m	w_p	time_s	dist	azm	s_sec	w_s	ain	mx_amp	per	p_calc	p_std	cf	f_p_time	p_res	s_std	s_res	xmag	fmag
VAR	e		2	1.16.24.45	1,7	309	28,28	2	171			1,84	1		31	2,65	1	4,81		1,7
RNI	e	d	1	1.16.25.06	29,1	309	29,33	2	110			5,29	0,5	D	31	-0,01	1	0,04		1,7
DDS	e	c	2	1.16.27.60	22,4	72	33,69	2	115			4,23	1	C	26	3,58	1	6,27		1,5

09/02/2008	13.43.20.94	46.3600	10.8700	7,3			1,7	274	0	1,0	184	17	3,7	D	0,07	0	MALE' (TN)			
st_name	p_rem	m	w_p	time_s	dist	azm	s_sec	w_s	ain	mx_amp	per	p_calc	p_std	cf	f_p_time	p_res	s_std	s_res	xmag	fmag
OZOL	i	c	0	13.43.23.75	14,3	80	26	2	131			3,24	0,1	C	23	0	1	-0,38		1,4
CARE	i	c	0	13.43.23.89	14,2	290	25,86	2	131			3,23	0,1	C	25	0	1	-0,78		1,5
RNI	e	c	1	13.43.28.94	48,4	203	35,19	2	104			8,54	0,5	C	30	-0,05	1	-0,52		1,6

09/02/2008	14.09.56.81	46.3600	10.8680	6		1,8	172	14	99	273	35	99	D	1,43	0	MALE' (TN)				M 1.3(S)	
st_name	p_rem	m	w_p	time_s	dist	azm	s_sec	w_s	ain	mx_amp	per	p_calc	p_std	cf	f_p_time	p_res	s_std	s_res	xmag	fmag	
OZOL	i	c	0	14.09.59.51	10	0	61,77	2	135			2,42	0,11	C	28	0,07	0,99	0,32			
CARE	i	d	0	14.09.59.66	30,1	294	61,61	2	108			5,43	0,11	D	26	-2,78	0,99	-5,17		1,5	
RNI	i	d	1	14.10.04.77	49,6	222	10,94	2	101			8,66	0,57	D	28	-0,83	0,99	-1,46		1,5	

09/02/2008	16.19.22.12	44.1770	10.9533	10,7		2,8	352	43	20	85	4	51	D	0,53	0	PORRETTA TERME (BO)				M 2.8(I)	
st_name	p_rem	m	w_p	time_s	dist	azm	s_sec	w_s	ain	mx_amp	per	p_calc	p_std	cf	f_p_time	p_res	s_std	s_res	xmag	fmag	
VAR	e		1	16.19.51.50	183,4	359	72,53	3	47			29,52	0,5		80	-0,34	2	-2,5		2,4	
DDS	e		2	16.19.52.45	190,2	6			47			30,37	1		98	-0,22		0		2,6	
RNI	e	c	1	16.19.54.42	202,2	353	77,84	3	47			31,86	0,5	C	82	0,22	2	-1,39		2,3	
PANI	e		2	16.19.55.77	210,4	8			47			32,9	1		81	0,53		0		2,3	

QUATERLY BULLETTIN *January-March 2008*

DATE	TIME	Geogr. Coord.		DEPTH	Magnitude		LOCATION ERRORS						RMS	TYPE	EPICENTRAL AREA	NOTES
DD-MM-YY	HH/MM/SS	LAT N	LON E	h (Km)	MA	MD	az1	dp1	se1	az2	dp2	se2	q			

10/02/2008	4.17.44.22	46.3660	10.869	6,9		1,6	172	14	99	273	35	99	D	0,56	0	MALE' (TN)				M 1.0(S)	
st_name	p_rem	m	w_p	time_s	dist	azm	s_sec	w_s	ain	mx_amp	per	p_calc	p_std	cf	f_p_time	p_res	s_std	s_res	xmag	fmag	
OZOL	i	c	0	4.17.46.95	10	0	49,27	2	135			2,42	2,22	C	23	-0,07	0,99	0,25			
CARE	i	c	0	4.17.47.05	30,1	294	49,01	2	108			5,43	0,11	C	23	-2,97	0,99	-5,35		1,4	
RNI	e		1	4.17.52.47	49,6	222	58,42	2	101			8,66	0,57		24	-0,7	0,99	-1,55		1,3	

10/02/2008	8.19.38.35	.	.											0	OZOL,CARE					
st_name	p_rem	m	w_p	time_s	dist	azm	s_sec	w_s	ain	mx_amp	per	p_calc	p_std	cf	f_p_time	p_res	s_std	s_res	xmag	fmag
OZOV	I	C	0	8.19.38.35			40,25	1		5,78	0,08				27					
OZON	I	C	0	8.19.38.35			40,25	1		8,6	0,11				27					
OZOE	I	C	0	8.19.38.35			40,25	1		8,36	0,13				27					
CARV			1	8.19.38.43			40,39	1		20	0,05				27					
CARN			1	8.19.38.43			40,39	1		17,5	0,02				27					
CARE			1	8.19.38.43			40,39	1		14,2	0,03				27					

10/02/2008	17.41.32.00	46.3620	10.8680	7,3		1,5	274	0	0,9	184	10	4,6	D	0,04	0	MALE' (TN)					
st_name	p_rem	m	w_p	time_s	dist	azm	s_sec	w_s	ain	mx_amp	per	p_calc	p_std	cf	f_p_time	p_res	s_std	s_res	xmag	fmag	
OZOL	i	c	0	17.41.34.80	14,8	74	37,11	2	120			2,92	0,1	C	20	0	1	-0,05		1,2	
CARE	i	c	0	17.41.34.91	14,7	296	36,85	2	120			2,9	0,1	C	19	0,01	1	-0,49		1,2	
RNI	e		2	17.41.40.09	46,9	204	46,24	2	100			8,15	1		23	0,1	1	-0,15		1,3	

11/02/2008	11.09.11.68	.	.											0	DDS,VAR					
st_name	p_rem	m	w_p	time_s	dist	azm	s_sec	w_s	ain	mx_amp	per	p_calc	p_std	cf	f_p_time	p_res	s_std	s_res	xmag	fmag
DDSE			2	11.09.11.68			15,9	2		7,75	0,18				39					
DDSN			2	11.09.11.68			15,9	2		6,89	0,29				39					
DDSV			2	11.09.11.68			15,9	2		4,13	0,38				39					
VARE			2	11.09.12.04			16,55	2		9,94	0,11				39					
VARV			2	11.09.12.04			16,55	2		5,87	0,14				39					
VARN			2	11.09.12.04			16,55	2		13,5	0,13				39					

11/02/2008	14.01.28.81	.	.											0	RNI					
st_name	p_rem	m	w_p	time_s	dist	azm	s_sec	w_s	ain	mx_amp	per	p_calc	p_std	cf	f_p_time	p_res	s_std	s_res	xmag	fmag
RNIE			1	14.01.28.81			29,47	1		152	0,11				18					
RNIN			1	14.01.28.81			29,47	1		105	0,13				18					
RNIV	I	C	1	14.01.28.81			29,47	1		38,7	0,08				18					

11/02/2008	15.58.06.05	.	.											0	OZOL					
st_name	p_rem	m	w_p	time_s	dist	azm	s_sec	w_s	ain	mx_amp	per	p_calc	p_std	cf	f_p_time	p_res	s_std	s_res	xmag	fmag
OZOV			2	15.58.06.05			6,713	2		40,1	0,05				11					
OZON			2	15.58.06.05			6,713	2		59,4	0,06				11					
OZOE			2	15.58.06.05			6,713	2		48,4	0,11				11					

12/02/2008	8.57.24.12	.	.											0	OZOL							
st_name	p_rem	m	w_p	time_s	dist	azm	s_sec	w_s	ain	mx_amp	per	p_calc	p_std	cf	f_p_time	p_res	s_std	s_res	xmag	fmag		
OZOV	E	C	1	8.57.24.12			25,48	1		11,3	0,1				19							
OZON			1	8.57.24.12			25,48	1		24,3	0,43				19							
OZOE			1	8.57.24.12			25,48	1		22	0,22				19							

QUATERLY BULLETTIN *January-March 2008*

DATE	TIME	Geogr. Coord.		DEPTH	Magnitude		LOCATION ERRORS							RMS	TYPE	EPICENTRAL AREA	NOTES
DD-MM-YY	HH/MM/SS	LAT N	LON E	h (Km)	MA	MD	az1	dp1	se1	az2	dp2	se2	q				

12/02/2008	11.06.15.42	46.1460	11.2050	11,2		1,8	313	12	0,8	220	17	6,6	D	0,02	2	BASELGA DI P. (TN)			EXPL?	
st_name	p_rem	m	w_p	time_s	dist	azm	s_sec	w_s	ain	mx_amp	per	p_calc	p_std	cf	f_p_time	p_res	s_std	s_res	xmag	fmag
PANI	i	c	0	11.06.18.58	14,6	139	21,01	2	127			3,14	0,1	C	30	0	1	-0,18		1,7
DDS	e	c	1	11.06.20.80	30	183			110			5,46	0,5	C	32	0		0		1,7
OZOL	e		2	11.06.21.13	30,8	337			110			5,6	1		32	0,23		0		1,7
VAR	e		2	11.06.23.05	43,2	214			104			7,62	1		25	0,12		0		1,4
CARE	i	c	0	11.06.24.11	50,1	308			103			8,7800	0,1	C	34	0		0		1,7

12/02/2008	18.48.26.63	.	.											0	DDS,VAR							
st_name	p_rem	m	w_p	time_s	dist	azm	s_sec	w_s	ain	mx_amp	per	p_calc	p_std	cf	f_p_time	p_res	s_std	s_res	xmag	fmag		
DDSV			2	18.48.26.63			28,55	2		2,36	0,06				16							
DDSN			2	18.48.26.63			28,55	2		4,71	6,1				16							
DDSE			2	18.48.26.63			28,55	2		3,19	0,13				16							
VARE			2	18.48.27.75			30,17	2		5,99	0,1				16							
VARN			2	18.48.27.75			30,17	2		8,69	0,08				16							
VARV			2	18.48.27.75			30,17	2		6,21	0,08				16							

13/02/2008	4.18.45.75	45.9670	11.1280	10,7		1,3	146	37	16	253	21	1,2	D	0,26	0	CALLIANO (TN)							
st_name	p_rem	m	w_p	time_s	dist	azm	s_sec	w_s	ain	mx_amp	per	p_calc	p_std	cf	f_p_time	p_res	s_std	s_res	xmag	fmag			
DDS	i	d	0	4.18.48.43	2,8	76	50,25	2	166			2,03	0,1	D	16	0,03	1	0,06		1			
PANI	e		1	4.18.49.31	24,1	35	52,3	2	116			4,57	0,5		19	-1,51	1	-2,2		1,2			
VAR	i	c	0	4.18.50.27	20,6	255	53,54	2	119			4,03	0,1	C	18	0	1	0,01		1,1			

13/02/2008	15.16.26.89	.	.											0	DDS					
st_name	p_rem	m	w_p	time_s	dist	azm	s_sec	w_s	ain	mx_amp	per	p_calc	p_std	cf	f_p_time	p_res	s_std	s_res	xmag	fmag
DDSE			2	15.16.26.89			33,03	2		9,19	0,35				29					
DDSN			2	15.16.26.89			33,03	2		5,6	0,37				29					
DDSV			2	15.16.26.89			33,03	2		5,08	0,4				29					

13/02/2008	16.03.16.99	.	.											1	PAGA,PANI			EXPL??		
st_name	p_rem	m	w_p	time_s	dist	azm	s_sec	w_s	ain	mx_amp	per	p_calc	p_std	cf	f_p_time	p_res	s_std	s_res	xmag	fmag
PAGV	I	C	1	16.03.16.99			19,25	2		1,31	0,18				31					
PANE			1	16.03.17.64			20,11	1		0,873	0,34				31					
PANV	I	C	1	16.03.17.64			20,11	1		0,381	0,13				31					
PANN			1	16.03.17.64			20,11	1		0,694	0,26				31					

14/02/2008	9.02.28.41	.	.											0	OZOL					
st_name	p_rem	m	w_p	time_s	dist	azm	s_sec	w_s	ain	mx_amp	per	p_calc	p_std	cf	f_p_time	p_res	s_std	s_res	xmag	fmag
OZOV	I	C	1	9.02.28.41			29,71	1		12	0,29				21					
OZOE			1	9.02.28.41			29,71	1		20,5	0,51				21					
OZON	E	D	1	9.02.28.41			29,71	1		47,5	0,54				21					

QUATERLY BULLETTIN *January-March 2008*

DATE	TIME	Geogr. Coord.		DEPTH	Magnitude		LOCATION ERRORS						RMS	TYPE	EPICENTRAL AREA	NOTES
DD-MM-YY	HH/MM/SS	LAT N	LON E	h (Km)	MA	MD	az1	dp1	se1	az2	dp2	se2	q			

14/02/2008	11.08.18.14	46.1390	11.2580	19,4		1,6	339	4	0,9	247	22	8,6	D	0,11	2	BASELGA DI P. (TN)			EXPL?		
st_name	p_rem	m	w_p	time_s	dist	azm	s_sec	w_s	ain	mx_amp	per	p_calc	p_std	cf	f_p_time	p_res	s_std	s_res	xmag	fmag	
PANI	e		2	11.08.21.91	12,5	160				132		2,86	1		21	0,48		0		1,3	
DDS	i	c	0	11.08.24.24	31,5	193	28,8	2	109			5,72	0,1	C	24	0,09	1	0,12		1,4	
OZOL	e		1	11.08.24.85	32,6	327	29,92	2	109			5,89	0,5		26	0,56	1	0,98		1,5	
VAR	e		1	11.08.26.51	47,1	219				103		8,27	0,5		27	-0,16		0		1,5	
CARE	i	c	0	11.08.27.86	54	304				102		9,43	0,1	C	25	0		0		1,4	

14/02/2008	11.59.02.14	46.1390	11.2200	12,6		1,7	332	6	2,0	240	19	3	D	0,03	2	BASELGA DI P. (TN)			EXPL?	
st_name	p_rem	m	w_p	time_s	dist	azm	s_sec	w_s	ain	mx_amp	per	p_calc	p_std	cf	f_p_time	p_res	s_std	s_res	xmag	fmag
PANI	e		1	11.59.05.27	12,5	141	7,69	2	134			2,95	0,5			0,04	1	-0,02		
DDS	e		0	11.59.07.50	28,9	187			112			5,35	0,1			0		0		
OZOL	e	c	1	11.59.08.06	32,6	334	12,69	2	110			5,94	0,5	C	26	0	1	-0,06		1,5
VAR	i	c	0	11.59.09.81	43,3	217			105			7,68	0,1	C		0,01		0		
CARE	i	c	1	11.59.11.11	52,4	308			103			9,18	0,5	C		-0,21		0		

14/02/2008	20.37.39.44	46.8505	13.4295	10		2,6	339	0	99	249	43	99	D	0,31	0	SPITTAL [A]			M 2.8(O)		
st_name	p_rem	m	w_p	time_s	dist	azm	s_sec	w_s	ain	mx_amp	per	p_calc	p_std	cf	f_p_time	p_res	s_std	s_res	xmag	fmag	
PANI	e		2	20.38.07.45	179,3	245	29,12	3	47			29,09	0,34		74	-3,76	0,99	-4,97		2,3	
OZOL	e		2	20.38.08.68	186,5	259			47			29,99	6,76		72	-3,34		0		2,2	
DDS	e		2	20.38.11.13	198,4	241	33,38	3	47			31,47	2,6		71	-2,42	0,99	-4,87		2,2	
CARE	e		2	20.38.12.74	212,9	261	35,74	3	47			33,29	2,29		74	-2,74	0,99	-5,94		2,2	
VAR	i	c	1	20.38.14.61	220,9	243	40,02	3	47			34,29	0,64	C	80	-1,77	0,69	-3,27		2,3	

15/02/2008	12.45.25.15	45.9050	10.6250	13,8		1,4	255	19	99	0	37	99	D	0,07	0	STORO (TN)							
st_name	p_rem	m	w_p	time_s	dist	azm	s_sec	w_s	ain	mx_amp	per	p_calc	p_std	cf	f_p_time	p_res	s_std	s_res	xmag	fmag			
RNI	i	c	1	12.45.27.78	10	0	30,18	2	135			2,42	0,57	C	20	0	0,99	0,34		1,3			
VAR	e		2	12.45.29.72	22,5	108				114		4,21	0,99		20	0,26		0		1,2			
CARE	i	d	0	12.45.35.45	59,6	5	43,17	2	100			10,33	0,11	D	17	-0,08	0,99	-0,47		1			

15/02/2008	17.21.16.25	46.1420	11.2190	12,7		1,6	330	5	3,8	237	28	12	D	0,01	2	BASELGA DI P. (TN)			EXPL?		
st_name	p_rem	m	w_p	time_s	dist	azm	s_sec	w_s	ain	mx_amp	per	p_calc	p_std	cf	f_p_time	p_res	s_std	s_res	xmag	fmag	
PANI	i	c	0	17.21.19.43	13	143	21,84	3	133			3,04	0,1	C	24	0	2	-0,14		1,4	
DDS	e		2	17.21.21.70	29,6	187				112		5,47	1		22	-0,03		0		1,3	
OZOL	e		2	17.21.22.06	32	334	26,7	2	111			5,85	1		26	-0,01	1	0,01		1,5	
VAR	e		3	17.21.23.91	43,9	216				105		7,78	2		25	-0,1		0		1,4	

16/02/2008	9.53.04.60	.	.											10	AUSTRIA					
st_name	p_rem	m	w_p	time_s	dist	azm	s_sec	w_s	ain	mx_amp	per	p_calc	p_std	cf	f_p_time	p_res	s_std	s_res	xmag	fmag
DDS	e		2	9.53.04.60			23,76	3							58					
VAR	i	c	2	9.53.06.80			27,92	3							48					

QUATERLY BULLETTIN January-March 2008

DATE	TIME	Geogr. Coord.		DEPTH	Magnitude		LOCATION ERRORS							RMS	TYPE	EPICENTRAL AREA	NOTES
DD-MM-YY	HH/MM/SS	LAT N	LON E	h (Km)	MA	MD	az1	dp1	se1	az2	dp2	se2	q				

16/02/2008	10.15.46.79	.	.											0	DDS,VAR					
st_name	p_rem	m	w_p	time_s	dist	azm	s_sec	w_s	ain	mx_amp	per	p_calc	p_std	cf	f_p_time	p_res	s_std	s_res	xmag	fmag
DDSV	I	C	1	10.15.46.79			49,41	1		8,99	0,13				20					
DDSN	E	D	1	10.15.46.79			49,41	1		17,8	0,06				20					
DDSE			1	10.15.46.79			49,41	1		28,7	0,1				20					
VARN			1	10.15.49.92			54,87	2		2,82	0,06				20					
VARE	E	D	1	10.15.49.92			54,87	2		2,37	0,1				20					
VARV	I	C	1	10.15.49.92			54,87	2		1,93	0,08				20					

16/02/2008	13.17.38.80	.	.											0	CARE	DOUBLE EVENT				
st_name	p_rem	m	w_p	time_s	dist	azm	s_sec	w_s	ain	mx_amp	per	p_calc	p_std	cf	f_p_time	p_res	s_std	s_res	xmag	fmag
CARV	E	D	1	13.17.38.80				8		9,76	0,02									
CARN			1	13.17.38.80				8		16,7	0,02									
CARE	I	D	1	13.17.38.80				8		5,79	0,02									

16/02/2008	22.13.01.31	.	.											10						
st_name	p_rem	m	w_p	time_s	dist	azm	s_sec	w_s	ain	mx_amp	per	p_calc	p_std	cf	f_p_time	p_res	s_std	s_res	xmag	fmag
VARV	E	D	1	22.13.01.30			35,39	2		0,535	0,66				157					
VARN			1	22.13.01.31			35,4	2		1,42	0,45				157					
VARE			1	22.13.01.31			35,4	2		1,09	0,46				157					
DDSN			1	22.13.02.48			38,05	2		1,4	0,91				158					
DDSE			1	22.13.02.48			38,05	2		1,46	0,77				158					
DDSV	E	D	1	22.13.02.48			38,06	2		0,716	0,74				158					
PANN			1	22.13.05.36			43,3	2		0,443	0,59				156					
PANV	E	D	1	22.13.05.36			43,3	2		0,206	1,4				156					
PANE			1	22.13.05.36			43,3	2		0,504	0,62				156					
PAGV			2	22.13.05.52			43,54	3		0,496	0,58				159					
OZOV	E	D	1	22.13.09.72			50,24	2		0,435	0,77				156					
OZOE			1	22.13.09.73			50,23	2		0,472	0,4				156					
OZON			1	22.13.09.73			50,23	2		1,3	0,58				156					
CARE			1	22.13.10.25			51,32	3		0,368	3,5				157					
CARN			1	22.13.10.25			51,32	3		0,338	1,9				157					
CARV	I	D	1	22.13.10.25			51,33	3		0,43	6,9				157					

17/02/2008	2.15.23.93	45.7480	11.0510	9,1		1,7	175	16	99	74	34	99	D	0,99	0	ALA (TN)				
st_name	p_rem	m	w_p	time_s	dist	azm	s_sec	w_s	ain	mx_amp	per	p_calc	p_std	cf	f_p_time	p_res	s_std	s_res	xmag	fmag
VAR	i	d	0	2.15.26.90	10	0	29,22	2	135			2,42	0,11	D	25	0,35	0,99	0,62		
DDS	i	d	0	2.15.27.44	27,6	55	30,09	2	110			5,02	0,11	D	30	-1,6	0,99	-2,94	1,6	
PANI	e	d	1	2.15.30.95	48,6	44	36,53	3	102			8,48	0,57	D	24	-1,52	0,99	-2,62	1,4	

17/02/2008	4.58.55.67	.	.											10						
st_name	p_rem	m	w_p	time_s	dist	azm	s_sec	w_s	ain	mx_amp	per	p_calc	p_std	cf	f_p_time	p_res	s_std	s_res	xmag	fmag
VAR	e		2	4.58.55.67			75,06	3							54					
DDS	e		2	4.58.57.41											60					
OZOL	e		2	4.59.04.36			28,91	3							76					

QUATERLY BULLETTIN *January-March 2008*

DATE	TIME	Geogr. Coord.		DEPTH	Magnitude		LOCATION ERRORS							RMS	TYPE	EPICENTRAL AREA	NOTES
DD-MM-YY	HH/MM/SS	LAT N	LON E	h (Km)	MA	MD	az1	dp1	se1	az2	dp2	se2	q				

17/02/2008	12.30.40.79	.	.											0	VAR,DDS					
st_name	p_rem	m	w_p	time_s	dist	azm	s_sec	w_s	ain	mx_amp	per	p_calc	p_std	cf	f_p_time	p_res	s_std	s_res	xmag	fmag
VARV	I	C	0	12.30.40.79			42,64	1		92	0,06				30					
VARN	E	D	0	12.30.40.79			42,64	1		96,6	0,05				30					
VARE			0	12.30.40.79			42,64	1		115	0,08				30					
DDSE			2	12.30.41.98			44,55	2		7,81	0,14				30					
DDSV			2	12.30.41.98			44,55	2		5,29	0,21				30					
DDSN			2	12.30.41.98			44,55	2		5,61	0,06				30					

17/02/2008	12.42.10.88	46.1138	10.5304	14,72			3	0	14	7,3	98	31	17	D	6,47	0	SAVIORE ADAM. (BS)		M 3.3(I)	
st_name	p_rem	m	w_p	time_s	dist	azm	s_sec	w_s	ain	mx_amp	per	p_calc	p_std	cf	f_p_time	p_res	s_std	s_res	xmag	fmag
RNI	e		2	12.42.14.90	16,4	154	46,94	3	132			3,77	1			0,03	2	28,96		
VAR	e		3	12.42.17.58	42,8	138			109			7,73	2		115	-1,12		0		3
CARE	e		2	12.42.17.81	36,8	20			112			6,77	1		132	0		0		3,2
OZOL	e		2	12.42.19.86	51,5	51			106			9,15	1		126	-0,23		0		3,1
DDS	e		3	12.42.22.04	57,2	117			104			10,1	2		105	0,99		0		2,9
PANI	e		2	12.42.22.44	62,6	96			103			11	1		90	0,49		0		2,7

17/02/2008	13.36.17.37	.	.												0	CARE				
st_name	p_rem	m	w_p	time_s	dist	azm	s_sec	w_s	ain	mx_amp	per	p_calc	p_std	cf	f_p_time	p_res	s_std	s_res	xmag	fmag
CARN	E	D	1	12.36.17.37			19,03	1		10,9	0,05				19					
CARE	I	D	1	12.36.17.37			19,03	1		4,87	0,03				19					
CARV	I	D	1	12.36.17.37			19,03	1		10,6	0,06				19					

17/02/2008	22.48.30.65	.	.												0	CARE				
st_name	p_rem	m	w_p	time_s	dist	azm	s_sec	w_s	ain	mx_amp	per	p_calc	p_std	cf	f_p_time	p_res	s_std	s_res	xmag	fmag
CARV	I	D	1	22.48.30.65			32,29	1		11,5	0,03				19					
CARE	I	D	1	22.48.30.65			32,29	1		5,38	0,06				19					
CARN	E	D	1	22.48.30.65			32,29	1		10,6	0,05				19					

18/02/2008	5.21.19.28	.	.												10					
st_name	p_rem	m	w_p	time_s	dist	azm	s_sec	w_s	ain	mx_amp	per	p_calc	p_std	cf	f_p_time	p_res	s_std	s_res	xmag	fmag
VAR	e		2	5.21.19.28			37,34	3							61					
DDS	e		2	5.21.20.20											60					
PANI	e		2	5.21.22.92											56					

18/02/2008	14.12.44.98	.	.												0	RNI	DOUBLE EVENT			
st_name	p_rem	m	w_p	time_s	dist	azm	s_sec	w_s	ain	mx_amp	per	p_calc	p_std	cf	f_p_time	p_res	s_std	s_res	xmag	fmag
RNIE			2	14.12.44.98			45,87	2		15,9	0,03									
RNIN			2	14.12.44.98			45,87	2		37,2	0,05									
RNIV			2	14.12.44.98			45,87	2		21,1	0,05									

QUATERLY BULLETTIN *January-March 2008*

DATE	TIME	Geogr. Coord.		DEPTH	Magnitude		LOCATION ERRORS							RMS	TYPE	EPICENTRAL AREA	NOTES
DD-MM-YY	HH/MM/SS	LAT N	LON E	h (Km)	MA	MD	az1	dp1	se1	az2	dp2	se2	q				

19/02/2008	13.52.58.67	46.3620	10.8680	7,8		2,1	123	5	0,8	214	9	1,1	D	0,04	0	MALE' (TN)					
st_name	p_rem	m	w_p	time_s	dist	azm	s_sec	w_s	ain	mx_amp	per	p_calc	p_std	cf	f_p_time	p_res	s_std	s_res	xmag	fmag	
OZOL	i	c	0	13.53.01.53	15	70	3,9	2	109			2,71	0,1	C	44	0	1	0,2		2,1	
CARE	i	d	0	13.53.01.67	15,3	300	3,63	1	108			2,76	0,1	D	52	0,02	0,5	-0,28		2,2	
RNI	i	c	1	13.53.06.69	45,9	204	12,98	2	96			7,89	0,5	C		0,01	1	0,12			
PANI	i	d	1	13.53.07.34	49,5	133	13,86	3	96			8,51	0,5	D	42	0,04	2	-0,1		1,9	
VAR	e		2	13.53.08.71	58,9	178	17,13	2	95			10,1	1		54	-0,17	1	0,35		2,2	
DDS	i	d	0	13.53.08.80	58,5	155	16,71	3	95			10,03	0,1	D	49	-0,01	2	0,05		2,1	

19/02/2008	21.58.59.23	44.3661	12.3748	10		2,9	59	1	99	328	43	99	D	1,16	0	RAVENNA				M 2.5(l)			
st_name	p_rem	m	w_p	time_s	dist	azm	s_sec	w_s	ain	mx_amp	per	p_calc	p_std	cf	f_p_time	p_res	s_std	s_res	xmag	fmag			
DDS	e		2	21.59.29.75	201,2	333			47			31,83	0,99			4,51		0					
VAR	e		2	21.59.30.42	207,9	327	59,03	3	47			32,67	0,99		88	4,33	0,99	7,3		2,4			
PANI	e		2	21.59.30.96	213,5	338			47			33,36	0,99			4,15		0					
OZOL	e		2	21.59.36.96	258,2	337	71,49	3	47			38,95	0,99		104	4,65	0,99	8,7		2,5			

20/02/2008	1.43.47.45	45.7650	11.0450	10,2		2,4	77	1	99	167	3	99	D	0,36	0	ALA (TN)				
st_name	p_rem	m	w_p	time_s	dist	azm	s_sec	w_s	ain	mx_amp	per	p_calc	p_std	cf	f_p_time	p_res	s_std	s_res	xmag	fmag
VAR	i	d	0	1.43.50.28	31,1	330	52,61	2	108			5,59	0,11	D	54	-2,95	0,99	-5,05		2,3
DDS	i	d	0	1.43.50.82	33,4	12	53,48	2	107			5,97	0,11	D	61	-2,77	0,99	-4,83		2,4
PANI	i	d	1	1.43.54.33	54,8	19	59,6	3	100			9,52	0,57	D	62	-2,8	0,99	-5,01		2,4
OZOL	e		2	1.43.59.77	91	358	69,54	3	96			15,64	0,99		55	-3,45	0,99	-5,9		2,2
CARE	e		2	1.44.01.10	98,4	342	11,15	2	96			16,91	0,99		42	-3,4	0,99	-6,58		1,9

20/02/2008	14.11.10.83	.	.											10						
st_name	p_rem	m	w_p	time_s	dist	azm	s_sec	w_s	ain	mx_amp	per	p_calc	p_std	cf	f_p_time	p_res	s_std	s_res	xmag	fmag
DDS	e		2	14.11.10.83											42					
VAR	e	c	1	14.11.11.28			25,08	2							47					

20/02/2008	17.03.00.38	.	.											0	PAGA					
st_name	p_rem	m	w_p	time_s	dist	azm	s_sec	w_s	ain	mx_amp	per	p_calc	p_std	cf	f_p_time	p_res	s_std	s_res	xmag	fmag
PAGV	I	D	1	17.03.00.38			1,249	3		19,9	0,05				10					

QUATERLY BULLETTIN *January-March 2008*

DATE	TIME	Geogr. Coord.		DEPTH	Magnitude		LOCATION ERRORS						RMS	TYPE	EPICENTRAL AREA	NOTES
DD-MM-YY	HH/MM/SS	LAT N	LON E	h (Km)	MA	MD	az1	dp1	se1	az2	dp2	se2				

20/02/2008	20.13.22.32	.	.											10	CENTRAL ITALY	M 2.9(S)	
------------	-------------	---	---	--	--	--	--	--	--	--	--	--	--	----	---------------	----------	--

st_name	p_rem	m	w_p	time_s	dist	azm	s_sec	w_s	ain	mx_amp	per	p_calc	p_std	cf	f_p_time	p_res	s_std	s_res	xmag	fmag
DDSE			1	20.13.22.32			50,83	2		0,52	0,11									
DDSV	I	D	1	20.13.22.32			50,82	2		0,313	0,93									
DDSN			1	20.13.22.32			50,83	2		0,483	0,1									
VARV	I	D	1	20.13.22.98			52,09	2		0,876	0,08									
VARN			1	20.13.22.98			52,1	2		1,58	0,06									
VARE			1	20.13.22.98			52,1	2		1,32	0,13									
PANE	E	D	1	20.13.24.18			53,83	2		0,378	0,11									
PANN			1	20.13.24.18			53,83	2		0,465	0,13									
PANV	E	D	1	20.13.24.18			53,83	2		0,191	0,1									
PAGV			2	20.13.26.53			59,32	3		0,324	0,16									
OZOE	E	D	1	20.13.30.12			64,98	2		0,251	0,13									
OZON			1	20.13.30.12			64,98	2		0,252	0,38									
OZOV	E	D	1	20.13.30.12			64,98	2		0,196	0,11									
CARN	I	C	1	20.13.32.17			68,49	3		0,164	2,8									
CARE	I	C	1	20.13.32.17			68,49	3		0,129	0,96									
CARV	I	D	1	20.13.32.17			68,48	3		0,193	5									

20/02/2008	22.46.28.75	46.3590	10.8650	7,1		2,3	124	5	0,8	215	7	1,1	D	0,04	0	MALE' (TN)	
------------	-------------	---------	---------	-----	--	-----	-----	---	-----	-----	---	-----	---	------	---	------------	--

st_name	p_rem	m	w_p	time_s	dist	azm	s_sec	w_s	ain	mx_amp	per	p_calc	p_std	cf	f_p_time	p_res	s_std	s_res	xmag	fmag
OZOL	i	c	0	22.46.31.60	15,3	69	33,91	2	106			2,71	0,1	C	67	0	1	0,15		2,5
CARE	i	c	0	22.46.31.69	15,3	301	33,63	1	106			2,72	0,1	C	50	0,02	0,5	-0,26		2,2
RNI	e		1	22.46.36.69	45,6	204	42,97	2	95			7,83	0,5		50	0	1	0,15		2,1
PANI	i	d	1	22.46.37.36	49,5	133	43,85	2	95			8,49	0,5	D	55	0,01	1	-0,14		2,2
VAR	e		2	22.46.38.75	58,7	178	47,07	2	94			10,05	1		73	-0,16	1	0,31		2,5
DDS	i	d	0	22.46.38.84	58,3	155			94			10	0,1	D	57	-0,01		0		2,2

21/02/2008	6.04.14.40	.	.											0	VAR,DDS	
------------	------------	---	---	--	--	--	--	--	--	--	--	--	--	---	---------	--

st_name	p_rem	m	w_p	time_s	dist	azm	s_sec	w_s	ain	mx_amp	per	p_calc	p_std	cf	f_p_time	p_res	s_std	s_res	xmag	fmag
VARV	I	C	1	6.04.14.40			16,42	1		6,57	0,06									
VARE			1	6.04.14.40			16,42	1		11,2	0,06									
VARN			1	6.04.14.40			16,42	1		7,82	0,1									
DDSE			1	6.04.14.68			16,93	1		3,01	0,61									
DDSN			1	6.04.14.68			16,93	1		2,64	2,7									
DDSV	I	C	1	6.04.14.68			16,93	1		1,44	0,1									

21/02/2008	9.32.49.36	.	.											0	CARE,OZOL	
------------	------------	---	---	--	--	--	--	--	--	--	--	--	--	---	-----------	--

st_name	p_rem	m	w_p	time_s	dist	azm	s_sec	w_s	ain	mx_amp	per	p_calc	p_std	cf	f_p_time	p_res	s_std	s_res	xmag	fmag
OZOE	I	C	1	9.32.49.36			51,24	2		2,4	0,16									
OZON	I	C	1	9.32.49.36			51,24	2		2,26	0,27									
OZOV	I	C	1	9.32.49.36			51,24	2		1,63	0,14									
CARE	I	D	1	9.32.49.42			51,39	1		3,82	0,05									
CARN	E	D	1	9.32.49.42			51,39	1		4,3	0,03									
CARV	I	C	1	9.32.49.42			51,39	1		4,53	0,06									

QUATERLY BULLETTIN *January-March 2008*

DATE	TIME	Geogr. Coord.		DEPTH	Magnitude		LOCATION ERRORS							RMS	TYPE	EPICENTRAL AREA	NOTES
DD-MM-YY	HH/MM/SS	LAT N	LON E	h (Km)	MA	MD	az1	dp1	se1	az2	dp2	se2	q				

22/02/2008	23.17.42.33	.	.											10			DOUBLE EVENT			
st_name	p_rem	m	w_p	time_s	dist	azm	s_sec	w_s	ain	mx_amp	per	p_calc	p_std	cf	f_p_time	p_res	s_std	s_res	xmag	fmag
VARE		2		23.17.42.33			59,92	2		1,27	0,11									
VARN		2		23.17.42.33			59,92	2		1,59	0,13									
VARV		2		23.17.42.33			59,92	2		0,778	0,11									
DDSE		2		23.17.42.90			61,12	2		0,748	0,24									
DDSN		2		23.17.42.90			61,12	2		0,996	1,1									
DDSV		2		23.17.42.90			61,12	2		0,727	5,8									
RNIV		2		23.17.44.54			63,53	2		0,281	0,14									
RNIN		2		23.17.44.54			63,52	2		0,716	0,14									
RNIE		2		23.17.44.54			63,52	2		1,07	0,18									
PANE		2		23.17.45.56			65,65	2		0,252	0,16									
PANV		2		23.17.45.56			65,65	2		0,145	0,21									
PANN		2		23.17.45.56			65,65	2		0,206	0,27									

24/02/2008	13.18.49.81	.	.											0	CARE							
st_name	p_rem	m	w_p	time_s	dist	azm	s_sec	w_s	ain	mx_amp	per	p_calc	p_std	cf	f_p_time	p_res	s_std	s_res	xmag	fmag		
CARE		1		13.18.49.81			50,13	2		4,89	0,02				10							
CARN		1		13.18.49.81			50,13	2		11,5	0,02				10							
CARV		1		13.18.49.81			50,13	2		8,95	0,03				10							

24/02/2008	16.35.01.13	.	.											0	RNI					
st_name	p_rem	m	w_p	time_s	dist	azm	s_sec	w_s	ain	mx_amp	per	p_calc	p_std	cf	f_p_time	p_res	s_std	s_res	xmag	fmag
RNIE	I	D	1	16.35.01.13			2,558	1		2,65	0,05				13					
RNIV	I	C	1	16.35.01.13			2,558	1		2,38	0,05				13					
RNIN	I	D	1	16.35.01.13			2,558	1		2,92	0,08				13					

25/02/2008	13.06.40.39	.	.											0	CARE					
st_name	p_rem	m	w_p	time_s	dist	azm	s_sec	w_s	ain	mx_amp	per	p_calc	p_std	cf	f_p_time	p_res	s_std	s_res	xmag	fmag
CARE	I	D	1	13.06.40.39			42,11	1		3,98	0,05				16					
CARN	I	D	1	13.06.40.39			42,11	1		3,84	0,14				16					
CARV	I	D	1	13.06.40.39			42,11	1		4,31	0,05				16					

25/02/2008	15.44.44.00	.	.											0	CARE					
st_name	p_rem	m	w_p	time_s	dist	azm	s_sec	w_s	ain	mx_amp	per	p_calc	p_std	cf	f_p_time	p_res	s_std	s_res	xmag	fmag
CARE	I	D	1	15.44.44.00			45,71	1		12,2	0,05				19					
CARN	I	D	1	15.44.44.00			45,71	1		13,3	0,1				19					
CARV	I	D	1	15.44.44.00			45,71	1		11,9	0,03				19					

25/02/2008	22.44.14.00	.	.											0	PAGA					
st_name	p_rem	m	w_p	time_s	dist	azm	s_sec	w_s	ain	mx_amp	per	p_calc	p_std	cf	f_p_time	p_res	s_std	s_res	xmag	fmag
PAGV	I	D	1	22.44.14.00			17,51	2		41,1	0,24				19					

26/02/2008	0.56.21.83	.	.											0	PAGA					
st_name	p_rem	m	w_p	time_s	dist	azm	s_sec	w_s	ain	mx_amp	per	p_calc	p_std	cf	f_p_time	p_res	s_std	s_res	xmag	fmag
PAGV	I	C	1	0.56.21.83			24,06	2		20,1	0,14				21					

QUATERLY BULLETTIN *January-March 2008*

DATE	TIME	Geogr. Coord.		DEPTH	Magnitude		LOCATION ERRORS							RMS	TYPE	EPICENTRAL AREA	NOTES
DD-MM-YY	HH/MM/SS	LAT N	LON E	h (Km)	MA	MD	az1	dp1	se1	az2	dp2	se2	q				

26/02/2008	1.29.54.54	.	.											0	PAGA					
st_name	p_rem	m	w_p	time_s	dist	azm	s_sec	w_s	ain	mx_amp	per	p_calc	p_std	cf	f_p_time	p_res	s_std	s_res	xmag	fmag
PAGV	I	D	1	1.29.54.54			57,89	2		34	0,32				25					

26/02/2008	2.32.54.72	.	.											0	PAGA					
st_name	p_rem	m	w_p	time_s	dist	azm	s_sec	w_s	ain	mx_amp	per	p_calc	p_std	cf	f_p_time	p_res	s_std	s_res	xmag	fmag
PAGV			1	2.32.54.72			57,33	3		216	0,18				22					

26/02/2008	4.34.25.85	.	.											0	PAGA					
st_name	p_rem	m	w_p	time_s	dist	azm	s_sec	w_s	ain	mx_amp	per	p_calc	p_std	cf	f_p_time	p_res	s_std	s_res	xmag	fmag
PAGV	I	D	1	4.34.25.85			28,39	2		5,33	0,48				16					

26/02/2008	15.16.08.91	.	.											0	OZOL,CARE							
st_name	p_rem	m	w_p	time_s	dist	azm	s_sec	w_s	ain	mx_amp	per	p_calc	p_std	cf	f_p_time	p_res	s_std	s_res	xmag	fmag		
OZOV	I	C	0	15.16.08.91			10,81	2		3,68	0,11				22							
OZON	I	C	0	15.16.08.91			10,81	2		5,43	0,11				22							
OZOE	I	C	0	15.16.08.91			10,81	2		7,05	0,13				22							
CARV	I	C	1	15.16.09.01			11	1		10,8	0,19				23							
CARN			1	15.16.09.01			11	1		11,1	4				23							
CARE	I	D	1	15.16.09.01			11	1		8,66	0,03				23							

26/02/2008	15.48.47.53	46.3580	10.8690		3,5		1,6	169	20	99	273	34	99	D	1,5	0	MALE' (TN)			
st_name	p_rem	m	w_p	time_s	dist	azm	s_sec	w_s	ain	mx_amp	per	p_calc	p_std	cf	f_p_time	p_res	s_std	s_res	xmag	fmag
OZOL	i	c	0	15.48.50.13	10	0	52,21	2	135			2,42	0,11	C	22	0,04	0,99	0,12		
CARE	i	c	0	15.48.50.26	30,1	294	52,19	1	108			5,43	0,11	C	27	-2,83	0,57	-5,24		1,5
RNI	i	c	1	15.48.55.36	49,6	222	61,63	2	101			8,66	0,57	C	20	-0,88	0,99	-1,42		1,2

27/02/2008	1.56.13.47	.	.											0	VAR					
st_name	p_rem	m	w_p	time_s	dist	azm	s_sec	w_s	ain	mx_amp	per	p_calc	p_std	cf	f_p_time	p_res	s_std	s_res	xmag	fmag
VARE			1	1.56.13.47			15,14	1		15,6	0,05				14					
VARN			1	1.56.13.47			15,14	1		18,8	0,06				14					
VARV	E	D	1	1.56.13.47			15,14	1		8,28	0,05				14					

27/02/2008	2.34.36.58	46.0300	11.5370		6,8		2,3	172	8	5,2	289	72	35	D	0,34	0	BORGO VALSUGANA (TN)			
st_name	p_rem	m	w_p	time_s	dist	azm	s_sec	w_s	ain	mx_amp	per	p_calc	p_std	cf	f_p_time	p_res	s_std	s_res	xmag	fmag
PANI	e	c	1	2.34.39.48	28,5	282	41,9	2	107			5,11	0,5	C	48	-0,51	1	-2,15		2,1
DDS	e	c	2	2.34.41.95	41,5	251	46,2	2	102			7,26	1	C	48	-0,15	1	-1,61		2,1
VAR	i	c	0	2.34.46.01	64,8	253	53,54	2	98			11,18	0,1	C	46	0	1	-1,22		2
OZOL	e		2	2.34.46.49	67	312	53,55	2	98			11,54	1		44	0,13	1	-1,83		2

27/02/2008	3.13.54.23	45.9590	10.8170		9,2		1,5	114	12	3,6	242	70	18	D	0,39	0	PRANZO (TN)			
st_name	p_rem	m	w_p	time_s	dist	azm	s_sec	w_s	ain	mx_amp	per	p_calc	p_std	cf	f_p_time	p_res	s_std	s_res	xmag	fmag
RNI	e		1	3.13.57.21	12,3	308	59,71	2	140			3,27	0,5		21	0,02	1	-0,23		1,3
VAR	e	d	1	3.13.57.41	15	129			134			3,59	0,5	D		-0,05		0		
DDS	e		1	3.13.59.72	34,4	96	63,73	2	113			6,38	0,5		24	-0,44	1	-1,5		1,4

QUATERLY BULLETTIN January-March 2008

DATE	TIME	Geogr. Coord.		DEPTH	Magnitude		LOCATION ERRORS						RMS	TYPE	EPICENTRAL AREA		NOTES	
DD-MM-YY	HH/MM/SS	LAT N	LON E	h (Km)	MA	MD	az1	dp1	se1	az2	dp2	se2	q					

27/02/2008	3.40.29.32	46.3620	10.8660	6,1		1,3	173	13	99	272	35	99	D	0,12	0	MALE' (TN)					
st_name	p_rem	m	w_p	time_s	dist	azm	s_sec	w_s	ain	mx_amp	per	p_calc	p_std	cf	f_p_time	p_res	s_std	s_res	xmag	fmag	
OZOL	i	c	0	3.40.32.07	10	2	34,26	2	136			2,44	0,48	C	16	0,1	0,99	0,27		1	
CARE	i	c	0	3.40.32.16	29,9	295	34,09	1	109			5,4	0,11	C	18	-2,76	0,99	-5,15		1,1	
RNI	e		1	3.40.37.25	49,5	222	43,54	2	102			8,63	0,57		16	-0,83	0,99	-1,32		0,9	

27/02/2008	11.08.10.47	.	.												10	APPENNINO FORLIVESE		M 2.5(l)		
st_name	p_rem	m	w_p	time_s	dist	azm	s_sec	w_s	ain	mx_amp	per	p_calc	p_std	cf	f_p_time	p_res	s_std	s_res	xmag	fmag
DDSV	I	D	1	11.08.10.47			32,68	2		0,693	1,2				130					
DDSE			1	11.08.10.48			32,68	2		1,02	0,46				130					
DDSN			1	11.08.10.48			32,68	2		1,56	0,42				130					
VARE			1	11.08.10.50			32,8	2		1,44	0,19				129					
VARN			1	11.08.10.50			32,8	2		2,03	0,16				129					
VARV	I	D	1	11.08.10.50			32,8	2		0,688	0,14				129					
PANE			1	11.08.13.15			36,61	2		0,698	0,21				126					
PANN			1	11.08.13.15			36,61	2		0,557	0,16				126					
PANV	I	D	1	11.08.13.16			36,61	2		0,309	0,21				126					
RNIN			1	11.08.13.84			38,08	2		0,729	0,22				129					
RNIE			1	11.08.13.84			38,08	2		1,01	0,18				129					
RNIV			1	11.08.13.84			38,07	2		0,255	0,34				129					
OZOE			1	11.08.18.25			46,82	2		0,623	0,26				127					
OZOV	E	D	1	11.08.18.25			46,82	2		0,337	0,26				127					
OZON			1	11.08.18.25			46,82	2		0,697	0,32				127					

27/02/2008	11.29.19.86	46.1340	11.2900	16,7		1,4	144	15	25	246	38	5,5	D	0,1	1	BASELGA DI P. (TN)		EXPL??		
st_name	p_rem	m	w_p	time_s	dist	azm	s_sec	w_s	ain	mx_amp	per	p_calc	p_std	cf	f_p_time	p_res	s_std	s_res	xmag	fmag
PANI	e	c	1	11.29.23.19	5,7	167	25,73	2	160			2,8	0,5	C	17	-0,04	1	0,06		1,1
DDS	e		1	11.29.25.62	26,5	202			120			5,24	0,5		18	0,13		0		1,1
VAR	e	c	1	11.29.28.16	44,5	227	34,69	2	109			8,05	0,5	C	23	-0,1	1	0,07		1,3

28/02/2008	9.02.31.27	.	.												0	OZOL				
st_name	p_rem	m	w_p	time_s	dist	azm	s_sec	w_s	ain	mx_amp	per	p_calc	p_std	cf	f_p_time	p_res	s_std	s_res	xmag	fmag
OZOE			1	9.02.31.27			32,54	1		28,6	0,21				20					
OZOV	I	C	1	9.02.31.27			32,54	1		17,3	0,16				20					
OZON			1	9.02.31.27			32,54	1		37,9	0,46				20					

28/02/2008	15.55.55.14	46.0900	11.3370	17,7		1,6	130	4	99	37	41	99	D	0,65	0	PALU' DEL FERS. (TN)				
st_name	p_rem	m	w_p	time_s	dist	azm	s_sec	w_s	ain	mx_amp	per	p_calc	p_std	cf	f_p_time	p_res	s_std	s_res	xmag	fmag
PANI	e	c	1	15.55.58.26	10	0	60,69	2	135			2,42	0,57	C	25	0,46	0,99	0,82		1,5
DDS	e	d	2	15.56.00.52	14,5	232			125			3,01	0,99	D	21	2,21		0		1,3
VAR	e		2	15.56.03.38	37	246			105			6,55	0,99		22	1,61		0		1,3

28/02/2008	16.19.23.83	46.1400	11.2520	16,1		1,5	346	8	5,0	250	38	14	D	0,16	2	BASELGA DI P. (TN)		EXPL?		
st_name	p_rem	m	w_p	time_s	dist	azm	s_sec	w_s	ain	mx_amp	per	p_calc	p_std	cf	f_p_time	p_res	s_std	s_res	xmag	fmag
PANI	e		2	16.19.27.27	11,7	161	29,88	3	139			3,03	1			0,1	2	0,15		
DDS	e	c	2	16.19.29.51	30,9	194			113			5,76	1	C	20	-0,24		0		1,2
OZOL	i	c	1	16.19.30.12	33,4	328			112			6,14	0,5	C	22	0,02		0		1,3
VAR	e		2	16.19.31.91	46,8	220			106			8,31	1		24	-0,36		0		1,4

QUATERLY BULLETTIN *January-March 2008*

DATE	TIME	Geogr. Coord.		DEPTH	Magnitude		LOCATION ERRORS							RMS	TYPE	EPICENTRAL AREA	NOTES
DD-MM-YY	HH/MM/SS	LAT N	LON E	h (Km)	MA	MD	az1	dp1	se1	az2	dp2	se2	q				

29/02/2008	4.02.42.72	.	.											0	VAR,DDS					
st_name	p_rem	m	w_p	time_s	dist	azm	s_sec	w_s	ain	mx_amp	per	p_calc	p_std	cf	f_p_time	p_res	s_std	s_res	xmag	fmag
VARV			2	4.02.42.72			44,8	2		20,9	0,05				21					
VARN			2	4.02.42.72			44,8	2		27,1	0,03				21					
VARE			2	4.02.42.72			44,8	2		33,8	0,06				21					
DDSV			2	4.02.42.87			45,1	2		1,94	0,05				21					
DDSN			2	4.02.42.87			45,1	2		4,19	0,08				21					
DDSE			2	4.02.42.87			45,1	2		5,75	0,08				21					

29/02/2008	6.07.23.80	.	.											0	OZOL,CARE							
st_name	p_rem	m	w_p	time_s	dist	azm	s_sec	w_s	ain	mx_amp	per	p_calc	p_std	cf	f_p_time	p_res	s_std	s_res	xmag	fmag		
OZOE	I	C	0	6.07.23.80			25,68	2		4,64	0,14				21							
OZOV	I	C	0	6.07.23.80			25,68	2		2,9	0,11				21							
OZON	I	C	0	6.07.23.80			25,68	2		3,56	0,08				21							
CARE	I	D	1	6.07.23.91			25,85	1		7,95	0				22							
CARN			1	6.07.23.91			25,85	1		5,72	0,02				22							
CARV	I	C	1	6.07.23.91			25,85	1		7,22	0,03				22							

29/02/2008	9.18.42.31	.	.											0	OZOL,CARE					
st_name	p_rem	m	w_p	time_s	dist	azm	s_sec	w_s	ain	mx_amp	per	p_calc	p_std	cf	f_p_time	p_res	s_std	s_res	xmag	fmag
OZOE			1	9.18.42.31			43,57	1		21,8	0,18				24					
OZON	E	D	1	9.18.42.31			43,57	1		30,7	0,11				24					
OZOV	I	D	1	9.18.42.31			43,57	1		17,7	0,05				24					
CARV	I	D	1	9.18.46.16			50,1	2		2,44	3,4				25					
CARN			1	9.18.46.16			50,1	2		3,48	4,4				25					
CARE	I	C	1	9.18.46.16			50,1	2		2,11	0,58				25					

29/02/2008	10.34.54.77	.	.											0	CARE					
st_name	p_rem	m	w_p	time_s	dist	azm	s_sec	w_s	ain	mx_amp	per	p_calc	p_std	cf	f_p_time	p_res	s_std	s_res	xmag	fmag
CARE			1	10.34.54.77			55,38	1		7,88	0				12					
CARV			1	10.34.54.77			55,38	1		6,14	0,02				12					
CARN	E	C	1	10.34.54.77			55,38	1		9,6	0,02				12					

29/02/2008	11.42.01.55	46.2300	12.8606	10		3,3	255	18	99	148	41	63	D	0,44	0	TRAVESIO (PN)				M 3.4(O)	
st_name	p_rem	m	w_p	time_s	dist	azm	s_sec	w_s	ain	mx_amp	per	p_calc	p_std	cf	f_p_time	p_res	s_std	s_res	xmag	fmag	
PANI	e		2	11.42.22.84	118,4	266	40,56	2	95			20,31	6,76		91	1,98	0,99	3,84		2,6	
DDS	e		2	11.42.25.16	132,7	258	43,94	3	59			22,47	4,77		133	2,03	0,99	3,17		3	
OZOL	e		2	11.42.26.10	142,5	283	45,87	3	59			23,92	6,76		148	1,56	0,99	2,59		3,1	
CARE	i	c	2	11.42.29.31	169,9	282	52,17	3	47			27,91	1,18	C	153	0,58	0,24	1,43		3,1	
RNI	e		2	11.42.30.48	174,1	265	53,78	3	47			28,43	1,53		118	1,31	0,24	2,26		2,8	

01/03/2008	4.54.21.60	44.8228	9.2960	10		2,8	287	22	99	176	41	99	D	0,38	0	MENCONICO (PV)			M 2.9(I)	
st_name	p_rem	m	w_p	time_s	dist	azm	s_sec	w_s	ain	mx_amp	per	p_calc	p_std	cf	f_p_time	p_res	s_std	s_res	xmag	fmag
RNI	e	c	2	4.54.48.99	173,3	36	74,46	3	47			28,34	0,22	C	81	3,96	0,99	7,15		2,4
VAR	e		2	4.54.50.14	174,9	45			47			28,54	0,99			4,93		0		
DDS	e		2	4.54.52.28	195,7	49			47			31,14	0,43			4,49		0		
PANI	e		2	4.54.54.64	216,7	47	83,71	3	47			33,76	0,18		90	4,19	0,99	6,74		2,4
OZOL	e		2	4.54.56.58	230,8	36	88,48	3	47			35,52	0,69		98	4,45	0,99	8,5300		2,5

QUATERLY BULLETTIN *January-March 2008*

DATE	TIME	Geogr. Coord.		DEPTH	Magnitude		LOCATION ERRORS						RMS	TYPE	EPICENTRAL AREA	NOTES
DD-MM-YY	HH/MM/SS	LAT N	LON E	h (Km)	MA	MD	az1	dp1	se1	az2	dp2	se2	q			

01/03/2008	5.14.35.90	.	.											10	MUGELLO	FORE M 2.8(I)				
st_name	p_rem	m	w_p	time_s	dist	azm	s_sec	w_s	ain	mx_amp	per	p_calc	p_std	cf	f_p_time	p_res	s_std	s_res	xmag	fmag
VAR	e	c	2	5.14.35.90			61,86	3							66					
PANI	e		3	5.14.37.69											119					
OZOL	e		2	5.14.41.65											115					

01/03/2008	6.24.13.01	.	.											10	APPENNINO BOLOGNES	D. E. FORE M 3.0(I)				
st_name	p_rem	m	w_p	time_s	dist	azm	s_sec	w_s	ain	mx_amp	per	p_calc	p_std	cf	f_p_time	p_res	s_std	s_res	xmag	fmag
VARN			2	6.24.13.01			37,57	2		3,04	0,3									
VARV			2	6.24.13.01			37,57	2		1,33	0,43									
VARE			2	6.24.13.01			37,57	2		2,47	0,45									
RNIE			2	6.24.16.80			42,68	2		1,46	0,54									
RNIN			2	6.24.16.80			42,68	2		1,05	0,32									
RNIV			2	6.24.16.80			42,68	2		0,473	0,77									

01/03/2008	6.36.28.24	44.4533	11.7243	1,27		2,8	109	18	90	215	39	99	D	0,75	0	IMOLA (BO)				FORE	
st_name	p_rem	m	w_p	time_s	dist	azm	s_sec	w_s	ain	mx_amp	per	p_calc	p_std	cf	f_p_time	p_res	s_std	s_res	xmag	fmag	
VAR	e		3	6.36.55.84	175,2	339			59			29,49	2,15			2,11		0			
PANI	e		2	6.36.58.36	190	351	85,09	3	47			31,45	1,07			2,59	2,06	4,61			
RNI	e		3	6.36.59.77	199,5	335			47			32,64	2,15		85	2,82		0		2,4	
OZOL	e		3	6.37.03.26	232,8	347			47			36,79	2,15			2,24		0			

01/03/2008	6.53.04.04	.	.											10			FORE			
st_name	p_rem	m	w_p	time_s	dist	azm	s_sec	w_s	ain	mx_amp	per	p_calc	p_std	cf	f_p_time	p_res	s_std	s_res	xmag	fmag
VAR	e		2	6.53.04.04			30,08	3							72					
RNI	e		3	6.53.09.14			33,92	3							81					
OZOL	e		3	6.53.11.97																

01/03/2008	6.58.29.55	45.5496	10.4391	10,39		2,4	256	1	28	166	7	59	D	5,11	0	PREVALLE (BS)					
st_name	p_rem	m	w_p	time_s	dist	azm	s_sec	w_s	ain	mx_amp	per	p_calc	p_std	cf	f_p_time	p_res	s_std	s_res	xmag	fmag	
VAR	e		3	6.58.34.41	54,3	41				101		9,45	2,01		64	20,05		0		2,4	
PANI	e		3	6.58.38.69	95,8	46	65,08	3	96			16,47	2,01		65	17,33	2,06	30,84		2,3	
RNI	e		3	6.58.40.32	59,7	14				100		10,35	2		78	25,05		0		2,6	

01/03/2008	7.03.30.47	.	.											10						
st_name	p_rem	m	w_p	time_s	dist	azm	s_sec	w_s	ain	mx_amp	per	p_calc	p_std	cf	f_p_time	p_res	s_std	s_res	xmag	fmag
PANI	e		3	7.03.30.47											137					
RNI	e		3	7.03.31.27			63,29	3							104					
VAR	e		3	7.03.32.08			57,36	3							144					
OZOL	e		3	7.03.38.46																

QUATERLY BULLETTIN *January-March 2008*

DATE	TIME	Geogr. Coord.		DEPTH	Magnitude		LOCATION ERRORS						RMS	TYPE	EPICENTRAL AREA	NOTES
DD-MM-YY	HH/MM/SS	LAT N	LON E	h (Km)	MA	MD	az1	dp1	se1	az2	dp2	se2	q			

01/03/2008	7.11.36.56	.	.											10		DOUBLE EVENT FORE
------------	------------	---	---	--	--	--	--	--	--	--	--	--	--	----	--	-------------------

st_name	p_rem	m	w_p	time_s	dist	azm	s_sec	w_s	ain	mx_amp	per	p_calc	p_std	cf	f_p_time	p_res	s_std	s_res	xmag	fmag
VARV		2		7.11.36.56			65,59	3		2,23	0,42									
VARN		2		7.11.36.56			65,59	3		4,38	0,42									
VARE		2		7.11.36.56			65,59	3		3,84	0,32									
PANE		2		7.11.40.02			70,95	3		1,61	0,58									
PANN		2		7.11.40.02			70,95	3		1,3	0,67									
PANV		2		7.11.40.02			70,96	3		0,645	0,48									
RNIN		2		7.11.41.45			71,9	3		2,12	0,35									
RNIE		2		7.11.41.45			71,9	3		2,92	0,4									
RNIV		2		7.11.41.46			71,89	3		0,937	0,45									
OZOE		2		7.11.45.05			80,12	3		1,74	0,43									
OZON		2		7.11.45.05			80,12	3		3,29	0,42									
OZOV		2		7.11.45.05			80,13	3		0,761	0,59									

01/03/2008	7.43.12.57	44.1318	11.3441	0,38		3,8	261	0	93	351	0	99	D	0,69	0	FIRENZUOLA (FI)	MAIN 1 M 4.2(I)
------------	------------	---------	---------	------	--	-----	-----	---	----	-----	---	----	---	------	---	-----------------	-----------------

st_name	p_rem	m	w_p	time_s	dist	azm	s_sec	w_s	ain	mx_amp	per	p_calc	p_std	cf	f_p_time	p_res	s_std	s_res	xmag	fmag
VAR	e	2		7.43.42.71	201,5	350	73,08	3	47			32,99	0,99		247	3,89	0,99	8,37		3,5
DDS	e	2		7.43.44.87	204,6	357	73,27	3	47			33,38	1,06		190	5,67	0,99	7,88		3,2
PANI	e	3		7.43.46.68	223,3	360	79,45	3	47			35,71	2,12		238	5,11	0,99	9,85		3,4
RNI	e	2		7.43.48.18	222,9	345	81,37	4	47			35,66	1,05		198	6,67	0,99	11,87		3,2
OZOL	e	3		7.43.52.17	263,5	355			47			40,73	2,12		238	5,66		0		3,4
CARE	e	2		7.43.52.34	269,7	349			47			41,51	1,07		246	4,89		0		3,4

01/03/2008	7.49.24.39	.	.											10		MULTI EVENT
------------	------------	---	---	--	--	--	--	--	--	--	--	--	--	----	--	-------------

st_name	p_rem	m	w_p	time_s	dist	azm	s_sec	w_s	ain	mx_amp	per	p_calc	p_std	cf	f_p_time	p_res	s_std	s_res	xmag	fmag
VAR	e	2		7.49.24.39			51,02	3												
PANI	e	3		7.49.27.57											82					
OZOL	e	3		7.49.31.78											86					

01/03/2008	7.54.59.67	.	.											10		MULTI EVENT
------------	------------	---	---	--	--	--	--	--	--	--	--	--	--	----	--	-------------

st_name	p_rem	m	w_p	time_s	dist	azm	s_sec	w_s	ain	mx_amp	per	p_calc	p_std	cf	f_p_time	p_res	s_std	s_res	xmag	fmag
VARV		3		7.54.59.67			84,77	3		0,965	0,32									
VARN		3		7.54.59.68			84,77	3		2,14	0,34									
VARE		3		7.54.59.68			84,77	3		1,7	0,38									
RNIV		3		7.55.03.21			31,35	3		0,512	0,4									
RNIN		3		7.55.03.21			31,34	3		1,03	0,64									
RNIE		3		7.55.03.21			31,34	3		1,18	0,48									
PANN		3		7.55.03.59			31,8	3		0,786	0,45									
PANE		3		7.55.03.59			31,8	3		0,644	0,51									
PANV		3		7.55.03.59			31,81	3		0,317	0,42									
OZON		3		7.55.06.71			37,19	3		1,27	0,46									
OZOE		3		7.55.06.71			37,19	3		0,693	0,45									
OZOV		3		7.55.06.72			37,18	3		0,431	0,58									

QUATERLY BULLETTIN *January-March 2008*

DATE	TIME	Geogr. Coord.		DEPTH	Magnitude		LOCATION ERRORS						RMS	TYPE	EPICENTRAL AREA	NOTES
DD-MM-YY	HH/MM/SS	LAT N	LON E	h (Km)	MA	MD	az1	dp1	se1	az2	dp2	se2	q			

01/03/2008	8.08.06.55	44.1990	11.5708	6,92		3,3	258	0	99	348	0	99	D	0,79	0	CASOLA VALSENIO (RA)		D. EVENT M 3.7(I)		
st_name	p_rem	m	w_p	time_s	dist	azm	s_sec	w_s	ain	mx_amp	per	p_calc	p_std	cf	f_p_time	p_res	s_std	s_res	xmag	fmag
VAR	e	2	8.08.36.65	198,2	345	65,03	3	47				31,81	1,02		138	4,37	0,99	7,78		2,9
DDS	e	2	8.08.37.02	199,1	351			47				31,92	1,02		133	4,64		0		2,9
PANI	e	3	8.08.41.95	216,6	355			47				34,11	2,02		139	7,34		0		2,9
RNI	e	3	8.08.42.66	221	341			47				34,66	0,99		127	7,51		0		2,8
OZOL	e	2	8.08.45.15	258,2	351			47				39,31	1,02		135	5,43		0		2,8
CARE	e	3	8.08.46.56	266,4	345			47				40,33	2,03		154	5,66		0		2,9

01/03/2008	8.43.46.93	44.1004	11.3445	8,76		3,6	347	43	29	79	2	86	D	0,86	0	FIRENZUOLA (FI)			MAIN 2 M 4.2(I)	
st_name	p_rem	m	w_p	time_s	dist	azm	s_sec	w_s	ain	mx_amp	per	p_calc	p_std	cf	f_p_time	p_res	s_std	s_res	xmag	fmag
VAR	e		2	8.44.17.82	195,1	350	46,03	3	47			31,21	1		176	-0,52	2	3,19		3,2
DDS	e	d	2	8.44.18.18	198,1	357			47			31,59	1	D	198	-0,53		0		3,3
RNI	e		2	8.44.21.64	216,6	345			47			33,89	1		200	0,59		0		3,2
PANI	e		3	8.44.21.77	216,8	360			47			33,91	2		188	0,69		0		3,2
OZOL	e	d	2	8.44.26.24	257	355			47			38,94	1	D	193	0,22		0		3,1
CARE	e		3	8.44.27.24	263,3	349			47			39,73	2		231	0,27		0		3,3

01/03/2008	9.36.24.12	44.4631	10.9541	10		3,2	121	9	99	216	28	99	D	0,4	0	MARANO PANARO (MO)			M 3.4(I)	
st_name	p_rem	m	w_p	time_s	dist	azm	s_sec	w_s	ain	mx_amp	per	p_calc	p_std	cf	f_p_time	p_res	s_std	s_res	xmag	fmag
DDS	e	3		9.36.50.50	168,5	6			47			27,73	0,11		144	0,5		0		3
VAR	e	3		9.36.52.87	161,6	358			59			26,73	0,99		70	3,91		0		2,3
PANI	e	3		9.36.56.29	188,8	9	82,98	3	47			30,28	0,99		136	3,71	0,99	6,6		2,9
CARE	e	3		9.37.00.44	228,9	355			47			35,29	0,99		144	2,78		0		2,9

01/03/2008	9.49.11.00	.	.												10					DOUBLE EVENT
st_name	p_rem	m	w_p	time_s	dist	azm	s_sec	w_s	ain	mx_amp	per	p_calc	p_std	cf	f_p_time	p_res	s_std	s_res	xmag	fmag
VARV		3		9.49.11.00			36,13	3		2,21	0,46									
VARE		3		9.49.11.00			36,14	3		4,79	0,38									
VARN		3		9.49.11.00			36,14	3		3,99	0,38									
PANV		3		9.49.14.85			42,36	3		0,515	0,69									
PANE		3		9.49.14.86			42,37	3		1,22	0,53									
PANN		3		9.49.14.86			42,37	3		1,11	0,4									
RNIV		3		9.49.15.32			42,22	3		1,1	0,62									
RNIN		3		9.49.15.32			42,23	3		2,25	0,74									
RNIE		3		9.49.15.32			42,23	3		3,41	0,51									
OZOV		3		9.49.20.07			50,56	3		0,794	0,8									
OZOE		3		9.49.20.07			50,56	3		1,31	0,42									
OZON		3		9.49.20.07			50,56	3		2,41	0,43									

01/03/2008	10.43.37.25	.	.											10	APPENNINO PISTOIESE	MAIN 3 M 4.0(S)				
st_name	p_rem	m	w_p	time_s	dist	azm	s_sec	w_s	ain	mx_amp	per	p_calc	p_std	cf	f_p_time	p_res	s_std	s_res	xmag	fmag
VAR	e	2		10.43.37.25			65,22	3							160					
DDS	i	2		10.43.37.58			65,12	4							191					
PANI	e	2		10.43.40.34											171					
RNI	e	2		10.43.41.15			69,74	4							178					
OZOL	e	3		10.43.45.71											174					

QUATERLY BULLETTIN *January-March 2008*

DATE	TIME	Geogr. Coord.		DEPTH	Magnitude		LOCATION ERRORS							RMS	TYPE	EPICENTRAL AREA	NOTES
DD-MM-YY	HH/MM/SS	LAT N	LON E	h (Km)	MA	MD	az1	dp1	se1	az2	dp2	se2	q				

01/03/2008	11.10.05.82	.	.											10	MUGELLO	AFTER M 3.2(I)				
st_name	p_rem	m	w_p	time_s	dist	azm	s_sec	w_s	ain	mx_amp	per	p_calc	p_std	cf	f_p_time	p_res	s_std	s_res	xmag	fmag
VARE			3	11.10.05.82			33,11	3		3,89	0,5									
VARN			3	11.10.05.82			33,11	3		3,98	0,37									
VARV			3	11.10.05.82			33,11	3		2,26	0,38									
PANV			3	11.10.09.70			39,88	3		0,595	0,38				142					
PANN			3	11.10.09.70			39,89	3		1,48	0,4				142					
PANE			3	11.10.09.70			39,89	3		1,54	0,42				142					
RNIE			3	11.10.09.82			40,3	3		2,83	0,45									
RNIN			3	11.10.09.82			40,3	3		2,47	0,35									
RNIV			3	11.10.09.83			40,3	3		0,945	0,58									
OZOE			3	11.10.15.28			48,32	3		1,28	0,45				144					
OZON			3	11.10.15.28			48,32	3		2,21	0,38				144					
OZOV			3	11.10.15.29			48,33	3		0,646	0,43				144					

01/03/2008	13.57.33.78	.	.											10	MUGELLO	AFTER M 2.7(I)				
st_name	p_rem	m	w_p	time_s	dist	azm	s_sec	w_s	ain	mx_amp	per	p_calc	p_std	cf	f_p_time	p_res	s_std	s_res	xmag	fmag
VARV	I	C	1	13.57.33.78			59,19	2		0,869	0,27				102					
VARN			1	13.57.33.78			59,19	2		1,64	0,27				102					
VARE			1	13.57.33.78			59,19	2		1,42	0,27				102					
OZOV	I	C	1	13.57.41.51			74,5	3		0,231	0,45									
OZON			1	13.57.41.51			74,5	3		0,81	0,37									
OZOE			1	13.57.41.51			74,5	3		0,445	0,46									

02/03/2008	11.33.25.78	.	.											10	MUGELLO	D. E. AFT. M 3.2(I)				
st_name	p_rem	m	w_p	time_s	dist	azm	s_sec	w_s	ain	mx_amp	per	p_calc	p_std	cf	f_p_time	p_res	s_std	s_res	xmag	fmag
VAR	e		2	11.33.25.78			54,26	3												
DDS	e	c	2	11.33.26.10			53,92	3												
RNI	e		2	11.33.30.65			60,1	4							118					
PANI	e		2	11.33.31.65											122					
CARE	e	c	2	11.33.35.10											145					
OZOL	e		3	11.33.35.71																

02/03/2008	11.57.50.14	.	.												10	MUGELLO	AFTER M 3.0(I)			
st_name	p_rem	m	w_p	time_s	dist	azm	s_sec	w_s	ain	mx_amp	per	p_calc	p_std	cf	f_p_time	p_res	s_std	s_res	xmag	fmag
VAR	e		2	11.57.50.14											144					
DDS	e		3	11.57.50.32			77,91	3							118					
PANI	e		3	11.57.56.15											87					

03/03/2008	23.50.03.89	.	.											10	TRASAGHIS (UD)			M 2.4(O)		
st_name	p_rem	m	w_p	time_s	dist	azm	s_sec	w_s	ain	mx_amp	per	p_calc	p_std	cf	f_p_time	p_res	s_std	s_res	xmag	fmag
PANI	e		2	23.50.03.89			21,21	3							53					
DDS	e	d	2	23.50.05.89			24,67	3							63					
OZOL	e	d	1	23.50.06.86			26,82	4							61					

04/03/2008	17.16.40.49	46.3620	10.4920		0,1		1,8	65	16	99	169	41	99	D	0,43	0	S. CATERINA V. (SO)		M 1.6(S)	
st_name	p_rem	m	w_p	time_s	dist	azm	s_sec	w_s	ain	mx_amp	per	p_calc	p_std	cf	f_p_time	p_res	s_std	s_res	xmag	fmag
CARE	i	c	0	17.16.43.34	10	0	45,73	2	135			2,42	0,11	C	32	0,01	0,99	0,27		
OZOL	i	c	1	17.16.47.90	28,5	74	53,65	3	109			5,17	0,57	C	29	2,07	0,99	3,73		1,6
RNI	e	c	1	17.16.48.08	39,7	188	53,61	2	104			7	0,57	C	26	0,4	0,99	0,41		1,4

QUATERLY BULLETTIN *January-March 2008*

DATE	TIME	Geogr. Coord.		DEPTH	Magnitude		LOCATION ERRORS						RMS	TYPE	EPICENTRAL AREA		NOTES	
DD-MM-YY	HH/MM/SS	LAT N	LON E	h (Km)	MA	MD	az1	dp1	se1	az2	dp2	se2	q					

06/03/2008	16.44.48.52	46.1290	11.2340	13,6		1,7	335	18	4,0	76	32	32	D	0,08	0	BASELGA DI P. (TN)				
st_name	p_rem	m	w_p	time_s	dist	azm	s_sec	w_s	ain	mx_amp	per	p_calc	p_std	cf	f_p_time	p_res	s_std	s_res	xmag	fmag
PANI	e		1	16.44.51.59	10	155	53,99	2	146			3,05	0,5		29	0,06	1	-0,14		1,6
DDS	e		2	16.44.53.83	28,9	194			117			5,54	1		28	-0,04		0		1,6
OZOL	i	c	1	16.44.54.72	34,9	330	59,54	3	113			6,48	0,5	C	24	-0,05	2	-0,35		1,4

06/03/2008	20.40.28.87	46.2810	10.4690	2,9		1,5	64	19	99	172	41	99	D	0,6	0	PONTE DI LEGNO (BS)		M 1.2(S)		
st_name	p_rem	m	w_p	time_s	dist	azm	s_sec	w_s	ain	mx_amp	per	p_calc	p_std	cf	f_p_time	p_res	s_std	s_res	xmag	fmag
CARE	i	c	0	20.40.32.90	10	0	36,19	2	135			2,42	0,11	C	22	1,26	0,99	2,42		
RNI	i		1	20.40.35.02	39,7	188	39,61	2	104			7	0,57		20	-0,97	0,99	-1,9		1,2
OZOL	e	c	1	20.40.36.90	28,5	74				109		5,17	0,57	C	22	2,76		0		1,3

07/03/2008	16.11.13.90	46.1550	11.2570	15,5		1,6	339	8	5,2	245	28	12	D	0,13	2	BASELGA DI P. (TN)			EXPL?	
st_name	p_rem	m	w_p	time_s	dist	azm	s_sec	w_s	ain	mx_amp	per	p_calc	p_std	cf	f_p_time	p_res	s_std	s_res	xmag	fmag
PANI	e		2	16.11.17.41	13,1	149	19,95	3	134			3,12	1		24	-0,01	2	-0,09		1,4
OZOL	e		1	16.11.20.04	31,7	332	24,72	3	112			5,84	0,5		24	0,06	2	0,12		1,4
VAR	e		2	16.11.22.24	45,1	217			106			8,01	1		22	0,09		0		1,3
CARE	i	c	2	16.11.23.05	52,2	306			104			9,1900	1	C		-0,31		0		

07/03/2008	23.25.55.00	.	.											0	RNI							
st_name	p_rem	m	w_p	time_s	dist	azm	s_sec	w_s	ain	mx_amp	per	p_calc	p_std	cf	f_p_time	p_res	s_std	s_res	xmag	fmag		
RNIV			2	23.25.55.00			56,17	2		5,58	0,08				13							
RNIN			2	23.25.55.00			56,17	2		7,67	0,02				13							
RNIE			2	23.25.55.00			56,17	2		4,19	0,08				13							

08/03/2008	10.58.57.79	46.2050	11.1850	12,9		1,8	155	1	2	245	13	4,6	D	0,03	0	MEZZOLOMBARDO (TN)				
st_name	p_rem	m	w_p	time_s	dist	azm	s_sec	w_s	ain	mx_amp	per	p_calc	p_std	cf	f_p_time	p_res	s_std	s_res	xmag	fmag
PANI	e	c	1	10.59.01.95	20,6	147	5,28	2	119			4,02	0,5	C	26	0,01	1	0,08		1,5
OZOL	i	c	1	10.59.02.40	24,3	334	6,16	2	115			4,59	0,5	C	30	-0,03	1	0,08		1,6
DDS	i	c	0	10.59.04.34	36,3	180	9,34	2	107			6,51	0,1	C	29	0	1	-0,14		1,6
CARE	i	c	1	10.59.05.78	45,2	303			104			7,97	0,5	C	30	-0,05		0		1,6
RNI	i	c	1	10.59.06.82	50,6	240	13,5	2	103			8,87	0,5	C	29	0,13	1	-0,16		1,6

08/03/2008	22.56.35.99	.	.											0	CARE							
st_name	p_rem	m	w_p	time_s	dist	azm	s_sec	w_s	ain	mx_amp	per	p_calc	p_std	cf	f_p_time	p_res	s_std	s_res	xmag	fmag		
CARE			1	22.56.35.99			37,28	1		10,8	1,3				17							
CARN	E	D	1	22.56.35.99			37,28	1		9,93	0,03				17							
CARV	E	D	1	22.56.35.99			37,28	1		9,04	0,02				17							

08/03/2008	23.42.28.06	.	.											0	DDS					
st_name	p_rem	m	w_p	time_s	dist	azm	s_sec	w_s	ain	mx_amp	per	p_calc	p_std	cf	f_p_time	p_res	s_std	s_res	xmag	fmag
DDSE			1	23.42.28.06			29,3	1		11,2	0,06				21					
DDSN			1	23.42.28.06			29,3	1		13,4	0,14				21					
DDSV	I	D	1	23.42.28.06			29,3	1		5,59	0,21				21					

QUATERLY BULLETTIN *January-March 2008*

DATE	TIME	Geogr. Coord.		DEPTH	Magnitude		LOCATION ERRORS							RMS	TYPE	EPICENTRAL AREA	NOTES
DD-MM-YY	HH/MM/SS	LAT N	LON E	h (Km)	MA	MD	az1	dp1	se1	az2	dp2	se2	q				

09/03/2008	0.32.48.69	45.8930	10.9470	11,3		1,6	339	6	12	74	33	1,4	D	0,55	0	RIVA DEL GARDA (TN)					
st_name	p_rem	m	w_p	time_s	dist	azm	s_sec	w_s	ain	mx_amp	per	p_calc	p_std	cf	f_p_time	p_res	s_std	s_res	xmag	fmag	
VAR	i	d	0	0.32.51.03	0	0	53,02	2	180			1,71	0,1	D	24	0	1	0,42			
DDS	i	c	0	0.32.52.43	23,3	75	55,42	2	113			4,34	0,1	C	23	-1,04	1	-1,52	1,4		
PANI	e		1	0.32.55.09	42	54	59,71	2	103			7,38	0,5		24	-1,39	1	-2,59	1,4		

09/03/2008	17.29.02.18	.	.												10					
st_name	p_rem	m	w_p	time_s	dist	azm	s_sec	w_s	ain	mx_amp	per	p_calc	p_std	cf	f_p_time	p_res	s_std	s_res	xmag	fmag
OZOL	e	d	2	17.29.02.18			17,65	3							78					
PANI	e		2	17.29.07.20											65					
DDS	e		2	17.29.10.43			31,27	3							52					

10/03/2008	15.14.58.02	.	.											0	DDS							
st_name	p_rem	m	w_p	time_s	dist	azm	s_sec	w_s	ain	mx_amp	per	p_calc	p_std	cf	f_p_time	p_res	s_std	s_res	xmag	fmag		
DDSV	I	D	1	15.14.58.02			60,29	1		12,2	0,1				18							
DDSN			1	15.14.58.02			60,29	1		16,9	0,11				18							
DDSE	E	C	1	15.14.58.02			60,29	1		9,74	0,22				18							

10/03/2008	21.40.09.27	.	.											0	VAR							
st_name	p_rem	m	w_p	time_s	dist	azm	s_sec	w_s	ain	mx_amp	per	p_calc	p_std	cf	f_p_time	p_res	s_std	s_res	xmag	fmag		
VARV	E	C	1	21.40.09.27			10,97	1		14,3	0,08				14							
VARN			1	21.40.09.27			10,97	1		21,2	0,05				14							
VARE			1	21.40.09.27			10,97	1		16,2	0,08				14							

10/03/2008	22.18.20.20	.	.											0	VAR							
st_name	p_rem	m	w_p	time_s	dist	azm	s_sec	w_s	ain	mx_amp	per	p_calc	p_std	cf	f_p_time	p_res	s_std	s_res	xmag	fmag		
VARV			2	22.18.20.20			22,2	2		12,3	0,03				16							
VARN			2	22.18.20.20			22,2	2		24,3	0,05				16							
VARE			2	22.18.20.20			22,2	2		17,6	0,05				16							

11/03/2008	15.57.51.67	46.1370	11.2790	13,4		1,6	333	12	3,2	232	42	7,8	D	0,1	0	BASELGA DI P. (TN)				
st_name	p_rem	m	w_p	time_s	dist	azm	s_sec	w_s	ain	mx_amp	per	p_calc	p_std	cf	f_p_time	p_res	s_std	s_res	xmag	fmag
PANI	e		1	15.57.54.63	10,4	159	56,8	2	141			2,81	0,5			0,04	1	-0,18		
DDS	e	c	1	15.57.57.15	29,6	195			113			5,51	0,5	C	22	0,01		0		1,3
OZOL	e		2	15.57.58.08	34,6	329	62,95	2	110			6,3	1			0,19	1	0,09		
VAR	e		2	15.57.59.81	45,8	221			106			8,12	1		25	0,1		0		1,4
CARE	i	c	1	15.58.01.25	55,6	305			103			9,75	0,5	C	22	-0,11		0		1,3

11/03/2008	18.15.50.71	.	.											10						
st_name	p_rem	m	w_p	time_s	dist	azm	s_sec	w_s	ain	mx_amp	per	p_calc	p_std	cf	f_p_time	p_res	s_std	s_res	xmag	fmag
VAR	e		2	18.15.50.71											45					
DDS	e	d	2	18.15.52.00			68,49	2							46					
RNI	e		2	18.15.53.35											41					

QUATERLY BULLETTIN *January-March 2008*

DATE	TIME	Geogr. Coord.		DEPTH	Magnitude		LOCATION ERRORS							RMS	TYPE	EPICENTRAL AREA	NOTES
DD-MM-YY	HH/MM/SS	LAT N	LON E	h (Km)	MA	MD	az1	dp1	se1	az2	dp2	se2	q				

11/03/2008	19.17.29.27	44.7903	10.8738	11,44		2,4	88	4	24	355	30	11	D	0,21	0	CARPI (MO)					
st_name	p_rem	m	w_p	time_s	dist	azm	s_sec	w_s	ain	mx_amp	per	p_calc	p_std	cf	f_p_time	p_res	s_std	s_res	xmag	fmag	
VAR	e		1	19.17.49.17	115,3	1	64,93	2	59			19,79	0,5		45	-0,03	1	0,17		1,9	
DDS	e	c	1	19.17.50.64	123,6	11	67,05	3	59			21,01	0,5	C	49	0,22	2	0,12		2	
RNI	e		2	19.17.51.96	133,8	352	68,59	3	59			22,51	1		48	0,02	2	-1,04		1,9	
PANI	e	d	1	19.17.53.36	144,7	14	72,71	3	59			24,11	0,5	D	56	-0,19	2	0,21		2,1	

12/03/2008	10.27.53.29	.	.											0	OZOL					
st_name	p_rem	m	w_p	time_s	dist	azm	s_sec	w_s	ain	mx_amp	per	p_calc	p_std	cf	f_p_time	p_res	s_std	s_res	xmag	fmag
OZON	E	C	1	10.27.53.29			54,71	1		12,8	0,03				13					
OZOE			1	10.27.53.29			54,71	1		12,4	0,02				13					
OZOV	E	C	1	10.27.53.29			54,71	1		6,59	0,02				13					

12/03/2008	17.15.25.10	.	.											0	CARE					
st_name	p_rem	m	w_p	time_s	dist	azm	s_sec	w_s	ain	mx_amp	per	p_calc	p_std	cf	f_p_time	p_res	s_std	s_res	xmag	fmag
CARN	I	D	1	17.15.25.10			25,81	1		24,7	0,02				13					
CARE	I	D	1	17.15.25.10			25,81	1		12,6	0,03				13					
CARV	I	D	1	17.15.25.10			25,81	1		11,2	0,08				13					

13/03/2008	1.04.46.39	.	.											0	DDS,VAR					
st_name	p_rem	m	w_p	time_s	dist	azm	s_sec	w_s	ain	mx_amp	per	p_calc	p_std	cf	f_p_time	p_res	s_std	s_res	xmag	fmag
DDSN	E	D	0	1.04.46.39			48,67	1		147	0,13				32					
DDSE	E	C	0	1.04.46.39			48,67	1		85,6	0,1				32					
DDSV	I	D	0	1.04.46.39			48,67	1		55,4	0,08				32					
VARV			1	1.04.47.16			49,91	1		86,7	0,08				32					
VARE			1	1.04.47.16			49,91	1		105	0,13				32					
VARN			1	1.04.47.16			49,91	1		86,1	0,16				32					

14/03/2008	8.08.54.37	.	.											0	CARE					
st_name	p_rem	m	w_p	time_s	dist	azm	s_sec	w_s	ain	mx_amp	per	p_calc	p_std	cf	f_p_time	p_res	s_std	s_res	xmag	fmag
CARN			1	8.08.54.37			55,1	1		59,7	0,05				15					
CARE			1	8.08.54.37			55,1	1		68,2	0,06				15					
CARV			1	8.08.54.37			55,1	1		55,1	0,03				15					

14/03/2008	13.14.04.02	.	.											0	CARE					
st_name	p_rem	m	w_p	time_s	dist	azm	s_sec	w_s	ain	mx_amp	per	p_calc	p_std	cf	f_p_time	p_res	s_std	s_res	xmag	fmag
CARV	E	C	1	13.14.04.02			4,883	1		143	0,03				17					
CARN	E	C	1	13.14.04.02			4,883	1		169	0,08				17					
CARE	E	C	1	13.14.04.02			4,883	1		76,4	0,03				17					

15/03/2008	2.28.05.36	.	.											0	VAR					
st_name	p_rem	m	w_p	time_s	dist	azm	s_sec	w_s	ain	mx_amp	per	p_calc	p_std	cf	f_p_time	p_res	s_std	s_res	xmag	fmag
VARV	E	C	1	2.28.05.36			6,734	1		5,78	0,1				18					
VARN			1	2.28.05.36			6,734	1		12,3	0,08				18					
VARE			1	2.28.05.36			6,734	1		8,69	0,21				18					

QUATERLY BULLETTIN *January-March 2008*

DATE	TIME	Geogr. Coord.		DEPTH	Magnitude		LOCATION ERRORS						RMS	TYPE	EPICENTRAL AREA	NOTES
DD-MM-YY	HH/MM/SS	LAT N	LON E	h (Km)	MA	MD	az1	dp1	se1	az2	dp2	se2	q			

15/03/2008	8.33.01.09	45.6310	10.8950	13,5		1,7	345	0	99	75	32	21	D	0,49	0	DOLCE' (VR)					
st_name	p_rem	m	w_p	time_s	dist	azm	s_sec	w_s	ain	mx_amp	per	p_calc	p_std	cf	f_p_time	p_res	s_std	s_res	xmag	fmag	
VAR	e		2	8.33.05.41	10,2	4	8,94	2	142			2,86	2,99		31	1,22	2,6	2,33		1,7	
DDS	e		2	8.33.07.72	28,3	55	12,73	2	115			5,34	2,99		23	1,17	2,6	1,92		1,4	

17/03/2008	15.39.59.71	46.1510	11.2580	13,9		0,5	211	9	8,2	307	34	6,4	D	0,09	2	BASELGA DI P. (TN)			EXPL?	
st_name	p_rem	m	w_p	time_s	dist	azm	s_sec	w_s	ain	mx_amp	per	p_calc	p_std	cf	f_p_time	p_res	s_std	s_res	xmag	fmag
PANI	e	c	2	15.40.02.98	11,6	159	5,37	2	141			3,17	1	C	8	0,16	1	-0,13		0,3
VAR	e		1	15.40.07.81	46,3	220	14,24	2	107			8,29	0,5			0,04	1	-0,07		
CARE	e		2	15.40.09.05	54,6	304			105			9,66	1			-0,11		0		

18/03/2008	11.03.43.24	47.1018	11.1793	14,48		2,6	200	4	17	293	31	64	D	0,31	0	STUBAIER ALPEN [A]	M 2.9(O)			
st_name	p_rem	m	w_p	time_s	dist	azm	s_sec	w_s	ain	mx_amp	per	p_calc	p_std	cf	f_p_time	p_res	s_std	s_res	xmag	fmag
CARE	e	c	2	11.03.57.94	83,9	206	69,05	3	100			14,55	1	C	98	0,07	2	-0,23		2,8
PANI	e		2	11.04.03.11	117,4	174	17,87	3	59			19,84	1		82	-0,15	2	-1		2,5
DDS	e	d	2	11.04.06.08	135,8	180	22,77	3	59			22,54	1	D	82	0,15	2	-0,86		2,5
VAR	e		2	11.04.07.10	143,3	189	25,32	3	59			23,65	1		85	0,06	2	-0,29		2,5

18/03/2008	16.42.29.70	.	.												10					
st_name	p_rem	m	w_p	time_s	dist	azm	s_sec	w_s	ain	mx_amp	per	p_calc	p_std	cf	f_p_time	p_res	s_std	s_res	xmag	fmag
CARE	e		2	16.42.29.70			40,51	3							46					
PANI	e	c	2	16.42.34.47			49,24	3							34					
DDS	e	c	2	16.42.37.59			54,25	2							36					

19/03/2008	4.50.45.37	46.5463	13.3296	5,16		2,8	265	48	21	94	41	59	D	0,75	0	PONTEBBA (UD)			M 2.9(O)		
st_name	p_rem	m	w_p	time_s	dist	azm	s_sec	w_s	ain	mx_amp	per	p_calc	p_std	cf	f_p_time	p_res	s_std	s_res	xmag	fmag	
PANI	e	d	2	4.51.13.01	163,3	251				59		27,39	1	D	88	0,08		0		2,5	
DDS	e		2	4.51.15.49	181	247	41,13	3	47			29,87	1		85	0,06	2	2,25		2,4	
CARE	e	d	2	4.51.18.14	202,8	267	46,8	3	47			32,59	1	D	87	-0,12	2	2,89		2,4	
VAR	e		2	4.51.18.27	204	248			47			32,74	1			-0,04		0			
RNI	e		2	4.51.20.09	217,9	254			47			34,48	1		79	0,02		0		2,3	

19/03/2008	11.02.16.02	46.2120	11.2000	13,3		1,7	336	3	5,1	245	19	8,5	D	0,04	2	CEMBRA (TN)			EXPL?	
st_name	p_rem	m	w_p	time_s	dist	azm	s_sec	w_s	ain	mx_amp	per	p_calc	p_std	cf	f_p_time	p_res	s_std	s_res	xmag	fmag
PANI	e	c	2	11.02.20.26	20,8	150	23,48	3	120			4,11	1	C	29	0,03	2	-0,09		1,6
OZOL	e		2	11.02.20.72	24,1	331	24,45	3	117			4,6	1			0,07	2	0,14		
CARE	i	d	1	11.02.24.09	45,6	301			105			8,06	0,5	D	24	-0,04		0		1,4
RNI	e	c	1	11.02.25.13	51,8	240			103			9,08	0,5	C	27	0,02		0		1,5

19/03/2008	21.18.46.30	.	.												0	DDS				
st_name	p_rem	m	w_p	time_s	dist	azm	s_sec	w_s	ain	mx_amp	per	p_calc	p_std	cf	f_p_time	p_res	s_std	s_res	xmag	fmag
DDSV	I	D	1	21.18.46.30			47,91	1		4,02	0,05				15					
DDSE			1	21.18.46.30			47,91	1		7,15	0,08				15					
DDSN	E	C	1	21.18.46.30			47,91	1		6,97	0,06				15					

QUATERLY BULLETTIN *January-March 2008*

DATE	TIME	Geogr. Coord.		DEPTH	Magnitude		LOCATION ERRORS						RMS	TYPE	EPICENTRAL AREA	NOTES
DD-MM-YY	HH/MM/SS	LAT N	LON E	h (Km)	MA	MD	az1	dp1	se1	az2	dp2	se2	q			

20/03/2008	7.56.36.69	.	.											0	RNI					
st_name	p_rem	m	w_p	time_s	dist	azm	s_sec	w_s	ain	mx_amp	per	p_calc	p_std	cf	f_p_time	p_res	s_std	s_res	xmag	fmag
RNIV	E	D	1	7.56.36.69			37,05	1		11,5	0,05				12					
RNIN			1	7.56.36.69			37,05	1		7,16	0,06				12					
RNIE			1	7.56.36.69			37,05	1		21,5	0,06				12					

20/03/2008	7.57.02.54	.	.											0	RNI					
st_name	p_rem	m	w_p	time_s	dist	azm	s_sec	w_s	ain	mx_amp	per	p_calc	p_std	cf	f_p_time	p_res	s_std	s_res	xmag	fmag
RNIV			1	7.57.02.54			3,149	1		5,27	0,03				14					
RNIN			1	7.57.02.55			3,149	1		5,69	0,06				14					
RNIE			1	7.57.02.55			3,149	1		14,9	0,14				14					

20/03/2008	15.12.54.07	.	.											0	DDS,VAR					
st_name	p_rem	m	w_p	time_s	dist	azm	s_sec	w_s	ain	mx_amp	per	p_calc	p_std	cf	f_p_time	p_res	s_std	s_res	xmag	fmag
DDSV	I	D	1	15.12.54.07			55,79	1		7,8	0,05				31					
DDSE	E	D	1	15.12.54.07			55,79	1		18,6	0,06				31					
DDSN			1	15.12.54.07			55,79	1		21,9	0,06				31					
VARE			1	15.12.56.67			60,47	1		11	0,08				30					
VARN			1	15.12.56.67			60,47	1		11,9	0,05				30					
VARV	I	D	1	15.12.56.67			60,47	1		6,95	0,08				30					

20/03/2008	22.15.55.10	.	.											0	CARE,OZOL					
st_name	p_rem	m	w_p	time_s	dist	azm	s_sec	w_s	ain	mx_amp	per	p_calc	p_std	cf	f_p_time	p_res	s_std	s_res	xmag	fmag
CARE	I	D	0	22.15.55.10			57,82	2		7,36	0,02				29					
CARN	I	C	0	22.15.55.10			57,82	2		9,24	0				29					
CARV	I	C	0	22.15.55.10			57,82	2		7,4	0				29					
OZON			1	22.15.55.43			58,34	1		7,47	0,08				30					
OZOV	I	D	1	22.15.55.43			58,34	1		4,38	0,08				30					
OZOE			1	22.15.55.43			58,34	1		7,26	0,13				30					

21/03/2008	8.42.41.76	.	.											0	OZOL					
st_name	p_rem	m	w_p	time_s	dist	azm	s_sec	w_s	ain	mx_amp	per	p_calc	p_std	cf	f_p_time	p_res	s_std	s_res	xmag	fmag
OZON	I	C	1	8.42.41.76			42,44	2		6,88	0,02				10					
OZOE	I	C	1	8.42.41.76			42,44	2		7,26	0,03				10					
OZOV	I	D	1	8.42.41.76			42,44	2		4,25	0,03				10					

21/03/2008	18.32.07.98	45.8060	11.0700	12,4			2,6	253	1	99	344	14	99	D	0,46	0	ALA (TN)			
st_name	p_rem	m	w_p	time_s	dist	azm	s_sec	w_s	ain	mx_amp	per	p_calc	p_std	cf	f_p_time	p_res	s_std	s_res	xmag	fmag
DDS	i	d	0	18.32.10.95	29,1	12	13,26	2	109			5,26	0,11	D	60	-2,5	0,99	-4,36		2,4
VAR	i	d	0	18.32.11.07	28	324	13,58	2	110			5,08	0,11	D	57	-2,21	0,99	-3,74		2,3
PANI	i	d	1	18.32.14.23	50,5	20	18,66	3	101			8,8	0,57	D	70	-2,74	0,99	-5,23		2,5
RNI	i	d	1	18.32.15.00	54,9	316	20,77	3	100			9,5300	0,57	D	57	-2,69	0,99	-4,4		2,3
OZOL	e	d	2	18.32.19.58	86,7	357	28,85	2	97			14,92	0,99	D	70	-3,47	0,99	-5,86		2,4
CARE	i	d	1	18.32.21.11	94,6	340	30,62	2	96			16,26	0,57	D	77	-3,3	0,99	-6,51		2,5

QUATERLY BULLETTIN *January-March 2008*

DATE	TIME	Geogr. Coord.		DEPTH	Magnitude		LOCATION ERRORS							RMS	TYPE	EPICENTRAL AREA	NOTES
DD-MM-YY	HH/MM/SS	LAT N	LON E	h (Km)	MA	MD	az1	dp1	se1	az2	dp2	se2	q				

24/03/2008	10.49.58.22	.	.											0	RNI					
st_name	p_rem	m	w_p	time_s	dist	azm	s_sec	w_s	ain	mx_amp	per	p_calc	p_std	cf	f_p_time	p_res	s_std	s_res	xmag	fmag
RNIN			1	10.49.58.22			60,09	1		5,62	0,1				18					
RNIE			1	10.49.58.22			60,09	1		4,92	0,1				18					
RNIV	I	D	1	10.49.58.22			60,09	1		3,44	0,06				18					

24/03/2008	19.20.13.52	.	.											0	RNI,VAR					
st_name	p_rem	m	w_p	time_s	dist	azm	s_sec	w_s	ain	mx_amp	per	p_calc	p_std	cf	f_p_time	p_res	s_std	s_res	xmag	fmag
RNIV	E	D	1	19.20.13.52			15,78	1		4,22	0,08				23					
RNIN			1	19.20.13.52			15,78	1		11,8	0,14				23					
RNIE			1	19.20.13.52			15,78	1		14	0,14				23					
VARV	E	C	1	19.20.13.86			16,64	1		2,5	0,13				23					
VARN			1	19.20.13.86			16,64	1		5,28	0,08				23					
VARE			1	19.20.13.86			16,64	1		4,71	0,18				23					

24/03/2008	23.57.52.54	.	.											0	CARE,OZOL							
st_name	p_rem	m	w_p	time_s	dist	azm	s_sec	w_s	ain	mx_amp	per	p_calc	p_std	cf	f_p_time	p_res	s_std	s_res	xmag	fmag		
CARE	I	C	1	23.57.52.54			54,47	1		3,61	0,08				19							
CARN			1	23.57.52.54			54,47	1		6,37	0,06				19							
CARV	I	D	1	23.57.52.54			54,47	1		6,21	0,05				19							
OZOV			2	23.57.53.06			55,27	2		1,26	0,16				19							
OZOE			2	23.57.53.06			55,27	2		1,79	0,16				19							
OZON			2	23.57.53.06			55,27	2		1,71	0,08				19							

25/03/2008	3.18.30.76	45.7220	10.0480	16,9			2	146	4	21	236	10	39	D	0,31	0	SARNICO (BG)			
st_name	p_rem	m	w_p	time_s	dist	azm	s_sec	w_s	ain	mx_amp	per	p_calc	p_std	cf	f_p_time	p_res	s_std	s_res	xmag	fmag
RNI	e		1	3.18.40.31	69,9	50	47,67	2	98			12,08	0,51		38	-2,52	0,99	-4,62		1,8
VAR	e	c	1	3.18.42.55	80,1	69	51,92	2	97			13,81	0,51	C	33	-2	2,6	-3,43		1,6
DDS	e		2	3.18.46.34	103,4	71			96			17,76	1		34	-2,15		0		1,6
PANI	e	d	2	3.18.48.88	121	64			59			20,75	1	D		-2,75		0		

25/03/2008	5.52.10.53	.	.												10	APPENNINO FORLIVESE	M 2.6(I)			
st_name	p_rem	m	w_p	time_s	dist	azm	s_sec	w_s	ain	mx_amp	per	p_calc	p_std	cf	f_p_time	p_res	s_std	s_res	xmag	fmag
VAR	e		2	5.52.10.53											81					
DDS	e		2	5.52.10.55			38,22	3							101					
PANI	e		2	5.52.13.28											86					
RNI	e		3	5.52.14.05											78					
OZOL	e		2	5.52.18.99																

25/03/2008	7.40.46.05	46.1800	13.2786	10			2,2	289	35	99	47	35	99	D	0,33	0	POVOLETTO (UD)			M 2.3(O)
st_name	p_rem	m	w_p	time_s	dist	azm	s_sec	w_s	ain	mx_amp	per	p_calc	p_std	cf	f_p_time	p_res	s_std	s_res	xmag	fmag
PANI	e	d	3	7.41.11.18	150,4	269	30,35	3	59			25,09	0,99	D	47	-0,23	0,99	-0,76		1,9
DDS	e		3	7.41.13.26	163,6	263			59			27,02	0,99		52	-0,05		0		1,9
OZOL	e		3	7.41.14.43	175,2	282	36,85	3	47			28,58	0,99		54	-0,44	0,99	-0,42		2
VAR	e		2	7.41.16.63	186,8	262			47			30,03	0,69		59	0,25		0		2

QUATERLY BULLETTIN January-March 2008

DATE	TIME	Geogr. Coord.		DEPTH	Magnitude		LOCATION ERRORS						RMS	TYPE	EPICENTRAL AREA	NOTES
DD-MM-YY	HH/MM/SS	LAT N	LON E	h (Km)	MA	MD	az1	dp1	se1	az2	dp2	se2	q			

26/03/2008	2.43.39.18	44.3676	11.4448	10		3,2	342	13	99	248	16	99	D	0,59	0	MONTERENZIO (BO)			M 3.3(l)	
st_name	p_rem	m	w_p	time_s	dist	azm	s_sec	w_s	ain	mx_amp	per	p_calc	p_std	cf	f_p_time	p_res	s_std	s_res	xmag	fmag
VAR	e		2	2.44.06.71	177,5	346	32,15	3	47			28,86	0,99		119	3,55	0,99	6,32		2,8
DDS	e	c	2	2.44.06.77	179,2	354			47			29,08	0,99	C	120	3,41		0		2,8
RNI	e		2	2.44.09.73	200	341			47			31,68	0,99		139	3,73		0		2,9
OZOL	e		2	2.44.14.69	238,3	353			47			36,46	0,99		138	3,99		0		2,8
CARE	e	c	2	2.44.15.53	245,7	346			47			37,39	0,99	C	126	3,74		0		2,7

26/03/2008	9.19.33.03	44.6918	10.1596	9,75		3,4	35	22	9,6	139	31	37	D	0,38	0	FORNOVO DI TARO (PR)				M 4.1(l)	
st_name	p_rem	m	w_p	time_s	dist	azm	s_sec	w_s	ain	mx_amp	per	p_calc	p_std	cf	f_p_time	p_res	s_std	s_res	xmag	fmag	
VAR	i	d	1	9.19.56.86	148	23	75,35	2	59			24,75	0,5	D	144	-1,27	1	-2,21		3,1	
RNI	i	d	2	9.19.57.87	157,5	13	78,13	3	59			26,15	1	D	140	-1,67	0,99	-1,94		3	
DDS	i	d	1	9.19.58.79	163,4	29	78,79	2	59			27,02	0,5	D	162	-1,6	1	-2,79		3,1	
PANI	e	d	2	9.20.01.69	185,5	29			47			29,9	1	D	130	-1,67		0		2,9	
CARE	i	d	1	9.20.04.55	206,9	11	28,12	3	47			32,56	0,5	D	169	-1,55	0,99	-3,61		3,1	
OZOL	i	d	1	9.20.05.29	212	19	30	3	47			33,21	0,5	D	136	-1,29	2	-2,59		2,9	

26/03/2008	13.07.06.43	.	.											0	VAR					
st_name	p_rem	m	w_p	time_s	dist	azm	s_sec	w_s	ain	mx_amp	per	p_calc	p_std	cf	f_p_time	p_res	s_std	s_res	xmag	fmag
VARV	E	D	1	13.07.06.43			7,853	1		14,9	0,08									
VARN			1	13.07.06.43			7,853	1		23	0,06									
VARE			1	13.07.06.43			7,853	1		21,4	0,11									

26/03/2008	16.18.01.40	.	.											1	PANI,DDS	EXPL??				
st_name	p_rem	m	w_p	time_s	dist	azm	s_sec	w_s	ain	mx_amp	per	p_calc	p_std	cf	f_p_time	p_res	s_std	s_res	xmag	fmag
PANV	I	C	1	16.18.01.40			3,418	1		0,321	0,1				34					
DDSV	I	C	1	16.18.03.82			7,763	3		0,268	2,3				32					
DDSN			1	16.18.03.82			7,763	3		0,412	2,4				32					
DDSE			1	16.18.03.82			7,763	3		0,334	0,51				32					

26/03/2008	16.47.14.49	46.1390	11.2530	18,1		1,5	343	2	3,6	252	24	9,5	D	0,38	0	BEDOLLO (TN)					
st_name	p_rem	m	w_p	time_s	dist	azm	s_sec	w_s	ain	mx_amp	per	p_calc	p_std	cf	f_p_time	p_res	s_std	s_res	xmag	fmag	
PANI	e		2	16.47.18.16	10,4	164				134		2,47	1		26	1,25		0		1,5	
DDS	i	c	1	16.47.20.39	30,3	196				108		5,45	0,5	C	19	0,65		0		1,2	
OZOL	e		2	16.47.21.09	34,8	327	25,93	2	106			6,19	1		25	0,64	1	0,61		1,4	
VAR	e	c	2	16.47.22.74	46,7	222				102		8,17	1	C	21	0,31		0		1,2	
RNI	e	c	1	16.47.23.86	55,3	251				100		9,6	0,5	C	20	0		0		1,2	
CARE	e	c	1	16.47.24.03	56,2	304				100		9,76	0,5	C	19	-0,01		0		1,1	

27/03/2008	9.03.28.16	.	.											0	OZOL					
st_name	p_rem	m	w_p	time_s	dist	azm	s_sec	w_s	ain	mx_amp	per	p_calc	p_std	cf	f_p_time	p_res	s_std	s_res	xmag	fmag
OZOV	I	C	1	9.03.28.16			29,74	1		14,7	0,14				23					
OZOE			1	9.03.28.16			29,74	1		17,8	0,21				23					
OZON			1	9.03.28.16			29,74	1		37	0,46				23					

QUATERLY BULLETTIN *January-March 2008*

DATE	TIME	Geogr. Coord.		DEPTH	Magnitude		LOCATION ERRORS							RMS	TYPE	EPICENTRAL AREA	NOTES
DD-MM-YY	HH/MM/SS	LAT N	LON E	h (Km)	MA	MD	az1	dp1	se1	az2	dp2	se2	q				

27/03/2008	20.09.30.92	.	.											0	RNI,VAR					
st_name	p_rem	m	w_p	time_s	dist	azm	s_sec	w_s	ain	mx_amp	per	p_calc	p_std	cf	f_p_time	p_res	s_std	s_res	xmag	fmag
RNIN			1	20.09.30.92			32,63	1		15,2	0,11				24					
RNIV	E	D	1	20.09.30.92			32,63	1		10	0,06				24					
RNIE			1	20.09.30.92			32,63	1		16,3	0,16				24					
VARE			1	20.09.32.52			35,83	1		7,16	0,29				25					
VARN			1	20.09.32.52			35,83	1		6,16	0,11				25					
VARV	I	D	1	20.09.32.52			35,83	1		4,01	0,08				25					

28/03/2008	11.23.45.97	44.7526	10.4656	10,71			2,4	269	7	23	172	45	35	D	0,37	0	S. ILARIO ENZA (RE)		M 2.5(I)	
st_name	p_rem	m	w_p	time_s	dist	azm	s_sec	w_s	ain	mx_amp	per	p_calc	p_std	cf	f_p_time	p_res	s_std	s_res	xmag	fmag
VAR	e		2	11.24.07.72	124,2	16			59			21,16	1		61	0,44		0		2,2
RNI	i	d	1	11.24.09.17	137,1	5	28,38	3	59			23,06	0,5	D	60	-0,03	2	1,07		2,1
DDS	e		1	11.24.09.25	137,5	24	29,26	3	59			23,13	0,5		60	0,01	2	1,87		2,1
PANI	e		3	11.24.12.09	159,5	25			59			26,36	2		50	-0,42		0		1,9
CARE	e		2	11.24.16.00	186,7	5	39,27	3	47			29,93	1		62	-0,2	2	-0,52		2,1
OZOL	e	d	2	11.24.16.32	189,1	14	41,04	3	47			30,23	1	D	61	-0,02	2	1,01		2,1

28/03/2008	14.53.35.80	.	.												0	CARE				
st_name	p_rem	m	w_p	time_s	dist	azm	s_sec	w_s	ain	mx_amp	per	p_calc	p_std	cf	f_p_time	p_res	s_std	s_res	xmag	fmag
CARV	I	D	1	14.53.35.80			37,15	1		17,9	0,05				19					
CARN	E	D	1	14.53.35.80			37,15	1		14,9	0,03				19					
CARE	I	D	1	14.53.35.80			37,15	1		12,8	0,05				19					

28/03/2008	16.38.24.65	44.7621	10.4803	11,33			2,3	243	9	30	144	42	43	D	0,39	0	S. ILARIO ENZA (RE)		M 2.6(I)	
st_name	p_rem	m	w_p	time_s	dist	azm	s_sec	w_s	ain	mx_amp	per	p_calc	p_std	cf	f_p_time	p_res	s_std	s_res	xmag	fmag
VAR	e		2	16.38.46.31	122,8	15			59			20,91	1		55	0,6		0		2,1
RNI	e	d	2	16.38.47.77	135,9	5	67,07	3	59			22,83	1	D	53	0,12	2	1,48		2
DDS	e		1	16.38.47.88	136,1	24			59			22,86	0,5		41	0,23		0		1,7
PANI	e		2	16.38.50.52	158,1	25			59			26,09	1		56	-0,4		0		2
CARE	e		2	16.38.54.48	185,5	5	77,9	3	47			29,71	1		59	-0,19	2	-0,18		2
OZOL	e		2	16.38.54.99	187,8	14	79,65	3	47			29,99	1		55	0,2	2	1,35		2

29/03/2008	1.58.11.20	.	.											0	SANTA MARIA [CH]	M 0.9(S)				
st_name	p_rem	m	w_p	time_s	dist	azm	s_sec	w_s	ain	mx_amp	per	p_calc	p_std	cf	f_p_time	p_res	s_std	s_res	xmag	fmag
CARE			2	1.58.11.20			15,19	2		2,91	0,08				24					
CARN			2	1.58.11.20			15,19	2		3,81	0,03				24					
CARV			2	1.58.11.20			15,19	2		5,33	7				24					

29/03/2008	2.28.18.93	.	.												0	OZOL,CARE				
st_name	p_rem	m	w_p	time_s	dist	azm	s_sec	w_s	ain	mx_amp	per	p_calc	p_std	cf	f_p_time	p_res	s_std	s_res	xmag	fmag
OZOE			1	2.28.18.93			24,28	1		11	0,13				32					
OZOV	E	C	1	2.28.18.93			24,28	1		5,11	0,13				32					
OZON			1	2.28.18.93			24,28	1		4,29	0,32				32					
CARN			1	2.28.20.00			26,39	2		4,36	1,9				32					
CARE			1	2.28.20.00			26,39	2		3,59	0,03				32					
CARV			1	2.28.20.00			26,39	2		4,53	3,1				32					

QUATERLY BULLETTIN *January-March 2008*

DATE	TIME	Geogr. Coord.		DEPTH	Magnitude		LOCATION ERRORS							RMS	TYPE	EPICENTRAL AREA	NOTES
DD-MM-YY	HH/MM/SS	LAT N	LON E	h (Km)	MA	MD	az1	dp1	se1	az2	dp2	se2	q				

29/03/2008	3.00.41.78	46.3595	12.8268	10		2	183	88	18	38	1	28	D	0,24	0	SOCCHIEVE (UD)			M 2.2(O)		
st_name	p_rem	m	w_p	time_s	dist	azm	s_sec	w_s	ain	mx_amp	per	p_calc	p_std	cf	f_p_time	p_res	s_std	s_res	xmag	fmag	
PANI	e		2	3.01.01.91	120,2	254			95			20,61	1		47	-0,51		0		1,9	
OZOL	e		2	3.01.04.94	136,7	273			59			23,06	1		39	0		0		1,7	
DDS	e	d	2	3.01.05.25	137,4	248	23,11	3	59			23,16	1	D	45	0,16	2	-0,16		1,8	
VAR	i	c	2	3.01.08.26	160,5	249			59			26,56	1	C	36	-0,23		0		1,6	
RNI	e		3	3.01.10.42	175,3	257			47			28,59	2		42	-0,17		0		1,7	

29/03/2008	13.04.43.03	.	.											0	VAR,RNI					
st_name	p_rem	m	w_p	time_s	dist	azm	s_sec	w_s	ain	mx_amp	per	p_calc	p_std	cf	f_p_time	p_res	s_std	s_res	xmag	fmag
VARE			2	13.04.43.03			48,2	2		6,28	0,21				33					
VARV			2	13.04.43.03			48,2	2		3,37	0,06				33					
VARN			2	13.04.43.03			48,2	2		12	0,11				33					
RNIV			2	13.04.43.76			49,4	2		1,4	0,1				33					
RNIN			2	13.04.43.76			49,4	2		4,52	0,13				33					
RNIE			2	13.04.43.76			49,4	2		6,64	0,13				33					

29/03/2008	14.49.44.17	44.4106	12.1185	9,65		3,1	53	11	93	314	41	57	D	0,21	0	RAVENNA			M 3.2(I)		
st_name	p_rem	m	w_p	time_s	dist	azm	s_sec	w_s	ain	mx_amp	per	p_calc	p_std	cf	f_p_time	p_res	s_std	s_res	xmag	fmag	
DDS	e		2	14.50.13.29	188,1	337			47			30,23	1,02		114	-0,87		0		2,7	
VAR	e	c	2	14.50.14.19	193	331	37,94	3	47			30,85	1,07	C	89	-0,6	4,07	-1,07		2,5	
PANI	e		2	14.50.15.12	201,9	343			47			31,96	1,04		98	-0,810		0		2,5	
RNI	e		2	14.50.17.90	218,8	328			47			34,07	2,04		136	-0,13		0		2,9	
OZOL	e	c	2	14.50.21.97	246,1	341			47			37,48	0,99	C	134	0,61		0		2,8	
CARE	e	c	2	14.50.23.69	259,1	335			47			39,1	0,99	C	122	0,54		0		2,7	

29/03/2008	20.19.15.30	44.7923	10.4556	10		2,6	28	27	99	133	27	99	D	0,07	0	GATTATICO (RE)			M 2.5(I)	
st_name	p_rem	m	w_p	time_s	dist	azm	s_sec	w_s	ain	mx_amp	per	p_calc	p_std	cf	f_p_time	p_res	s_std	s_res	xmag	fmag
VAR	e		2	20.19.36.92	129,8	15				59		22,04	0,99		74	0,74		0		2,4
RNI	e	c	2	20.19.38.17	142,7	5	57,68	3	59			23,95	8,13	C	64	0,07	0,99	0,77		2,2
DDS	e		2	20.19.38.37	143	23				59		23,99	0,12		82	0,26		0		2,5
CARE	e	c	1	20.19.45.05	192,3	5	68,64	3	47			30,72	1,73	C	59	0,05	0,29	-0,56		2
OZOL	e	c	2	20.19.45.37	194,7	14	69,85	3	47			31,01	5,66	C	71	0,23	0,99	0,41		2,2

30/03/2008	0.29.34.77	46.8310	11.4390	15,2		2	164	8	99	258	28	99	D	0,68	0	PENNES (BZ)				
st_name	p_rem	m	w_p	time_s	dist	azm	s_sec	w_s	ain	mx_amp	per	p_calc	p_std	cf	f_p_time	p_res	s_std	s_res	xmag	fmag
OZOL	i	c	1	0.29.44.97	69	213	52,95	2	98			11,92	0,57	C	34	-1,61	0,99	-2,95		1,7
CARE	i	c	1	0.29.46.93	85,4	230	56,99	2	97			14,71	0,57	C	30	-2,47	0,99	-3,92		1,5
PANI	i	d	1	0.29.49.82	98,3	190	61,63	2	96			16,88	0,57	D	38	-1,74	0,99	-3,12		1,7
DDS	e		2	0.29.53.05	119,1	193	67,05	2	95			20,43	0,99		33	-2,04	0,99	-4		1,5
RNI	e	d	1	0.29.54.17	126,4	214			59			21,55	0,57	D	34	-2,19		0		1,6
VAR	e		2	0.29.55.26	131,6	202			59			22,31	0,99		38	-1,84		0		1,7

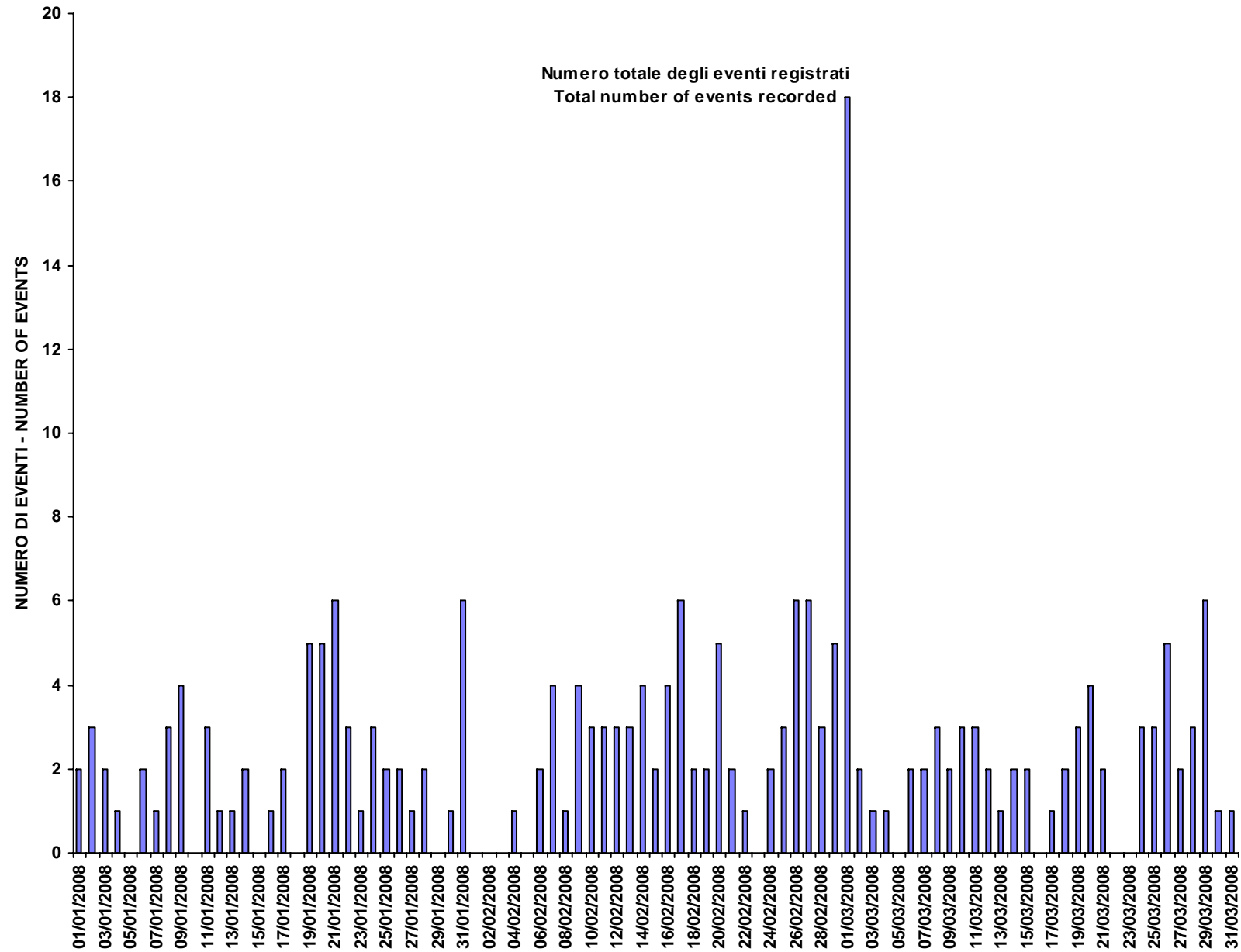
QUATERLY BULLETTIN *January-March 2008*

DATE	TIME	Geogr. Coord.		DEPTH	Magnitude		LOCATION ERRORS							RMS	TYPE	EPICENTRAL AREA	NOTES
DD-MM-YY	HH/MM/SS	LAT N	LON E	h (Km)	MA	MD	az1	dp1	se1	az2	dp2	se2	q				

31/03/2008	9.46.57.29	46.1540	11.2490	15,7		1,7	336	11	2,9	241	27	7,1	D	0,47	2	BEDOLLO (TN)			EXPL?	
st_name	p_rem	m	w_p	time_s	dist	azm	s_sec	w_s	ain	mx_amp	per	p_calc	p_std	cf	f_p_time	p_res	s_std	s_res	xmag	fmag
PANI	i	c	1	9.47.01.43	12,8	169	3,92	2	128			2,77	0,5	C	26	1,16	1	1,32		1,5
DDS	i	c	1	9.47.03.63	32,8	196			107			5,86	0,5	C	27	0,4		0		1,5
OZOL	i	d	1	9.47.03.95	33	324	8,55	3	107			5,89	0,5	D	27	0,71	2	0,67		1,5
VAR	e		2	9.47.05.89	48,9	220			102			8,5300	1		23	0,02		0		1,3
CARE	i	c	1	9.47.06.93	55,2	302			100			9,59	0,5	C	31	-0,02		0		1,6
RNI	e		1	9.47.07.17	56,5	249			100			9,81	0,5		20	0,02		0		1,2

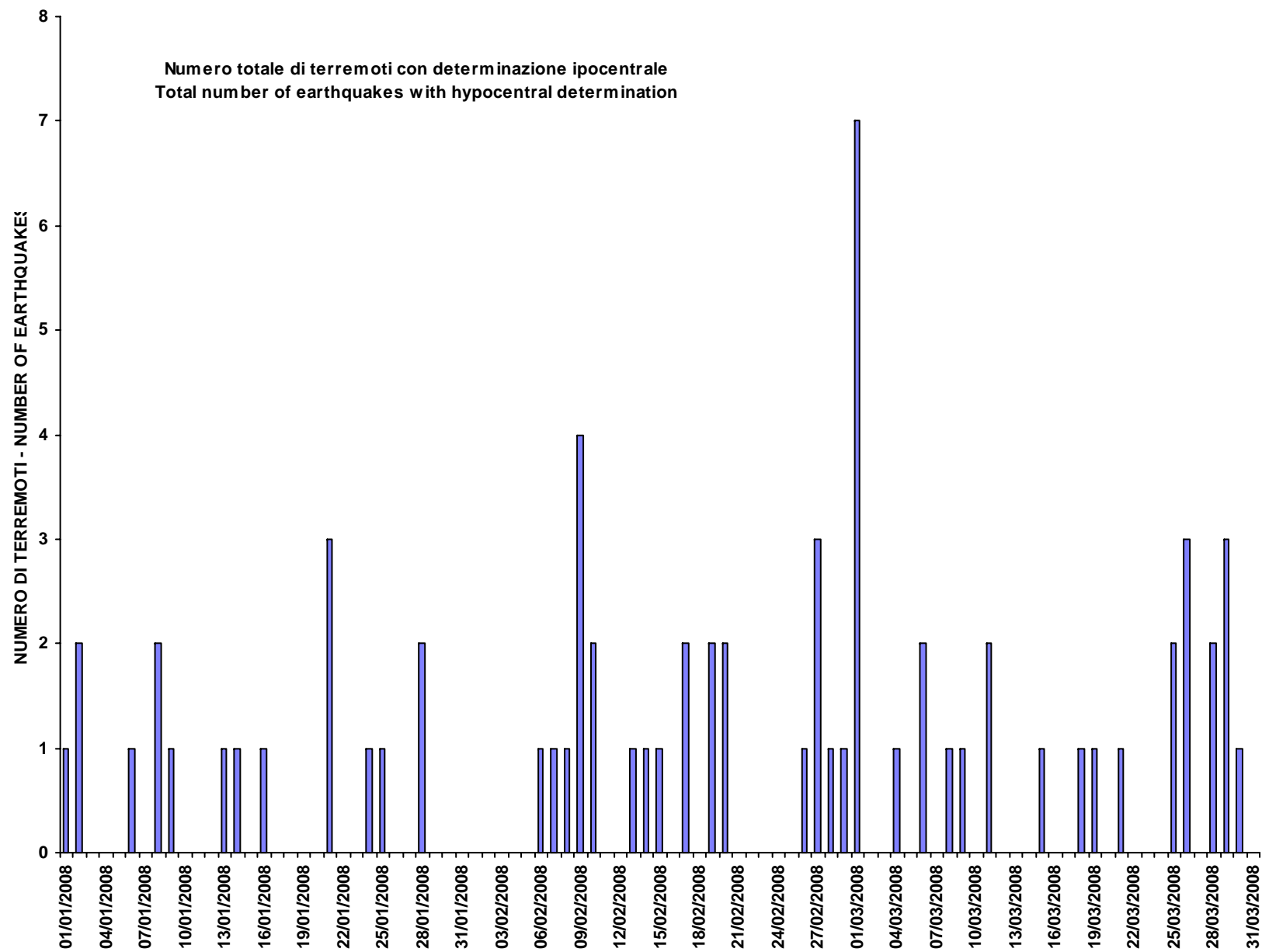
RETE SISMICA DEL TRENTINO ; PERIODO : GENNAIO - MARZO 2008

TRENTINO SEISMOMETRIC NETWORK ; PERIOD : JANUARY - MARCH 2008



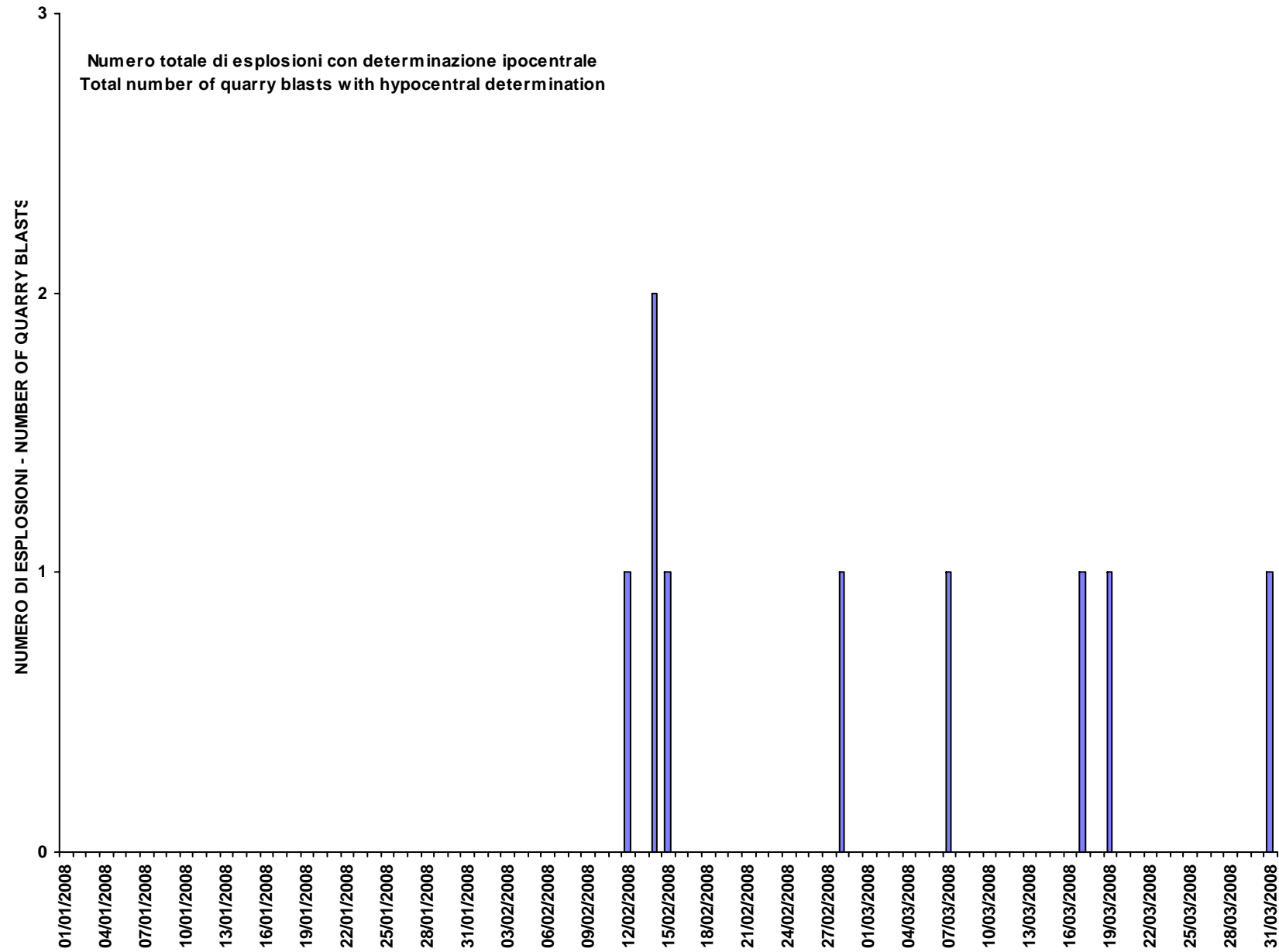
RETE SISMICA DEL TRENTINO ; PERIODO : GENNAIO - MARZO 2008

TRENTINO SEISMOMETRIC NETWORK ; PERIOD : JANUARY - MARCH 2008



RETE SISMICA DEL TRENTINO ; PERIODO : GENNAIO - MARZO 2008

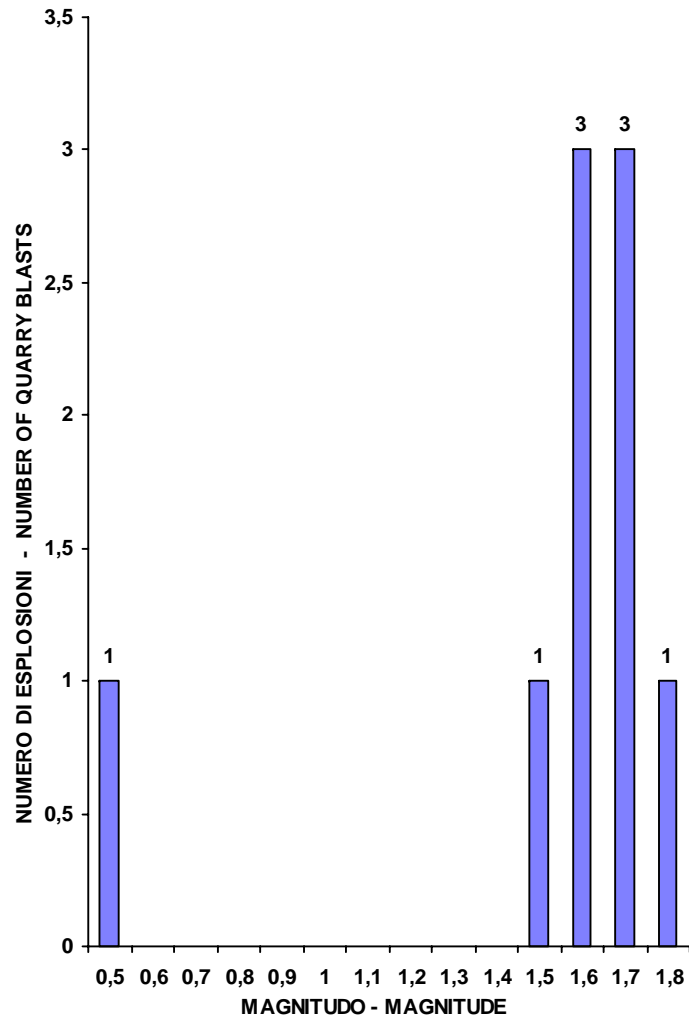
TRENTINO SEISMOMETRIC NETWORK ; PERIOD : JANUARY - MARCH 2008



RETE SISMICA DEL TRENTINO ; PERIODO : GENNAIO - MARZO 2008

TRENTINO SEISMOMETRIC NETWORK ; PERIOD : JANUARY - MARCH 2008

Numero di esplosioni in funzione della magnitudo
Number of quarry blasts versus magnitude



Numero di terremoti in funzione della magnitudo
Number of earthquakes versus magnitude

