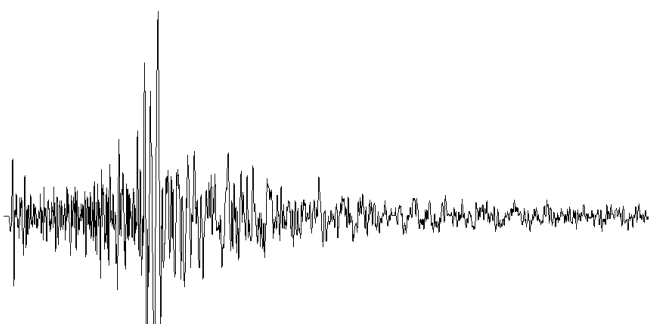
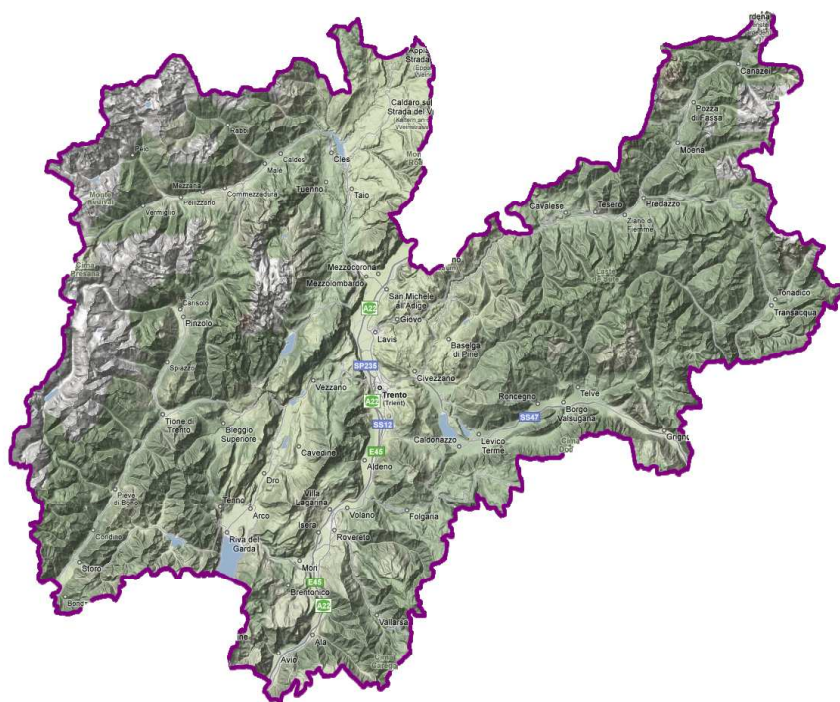




PROVINCIA AUTONOMA DI TRENTO
SERVIZIO GEOLOGICO

**TRENTINO
SEISMOMETRIC NETWORK**

JANUARY
MARCH
2013



QUARTERLY BULLETIN



PROVINCIA AUTONOMA DI TRENTO
Servizio Geologico



Important information

All the localizations reported in this Seismic Catalogue are the result of best solutions which are obtained using seismic phases from stations of different Seismometric Networks.

In particular, data are from the following national/regional Seismometric Networks (SN) operating in the NE Alps area:

- Friuli and Veneto SN
- INGV Italian National SN
- MedNet SN
- NE Italy SN (broadband)
- Austrian SN
- Südtirol SN

The Staff of the PAT Seismometric Network

TRENTINO SEISMOMETRIC NETWORK

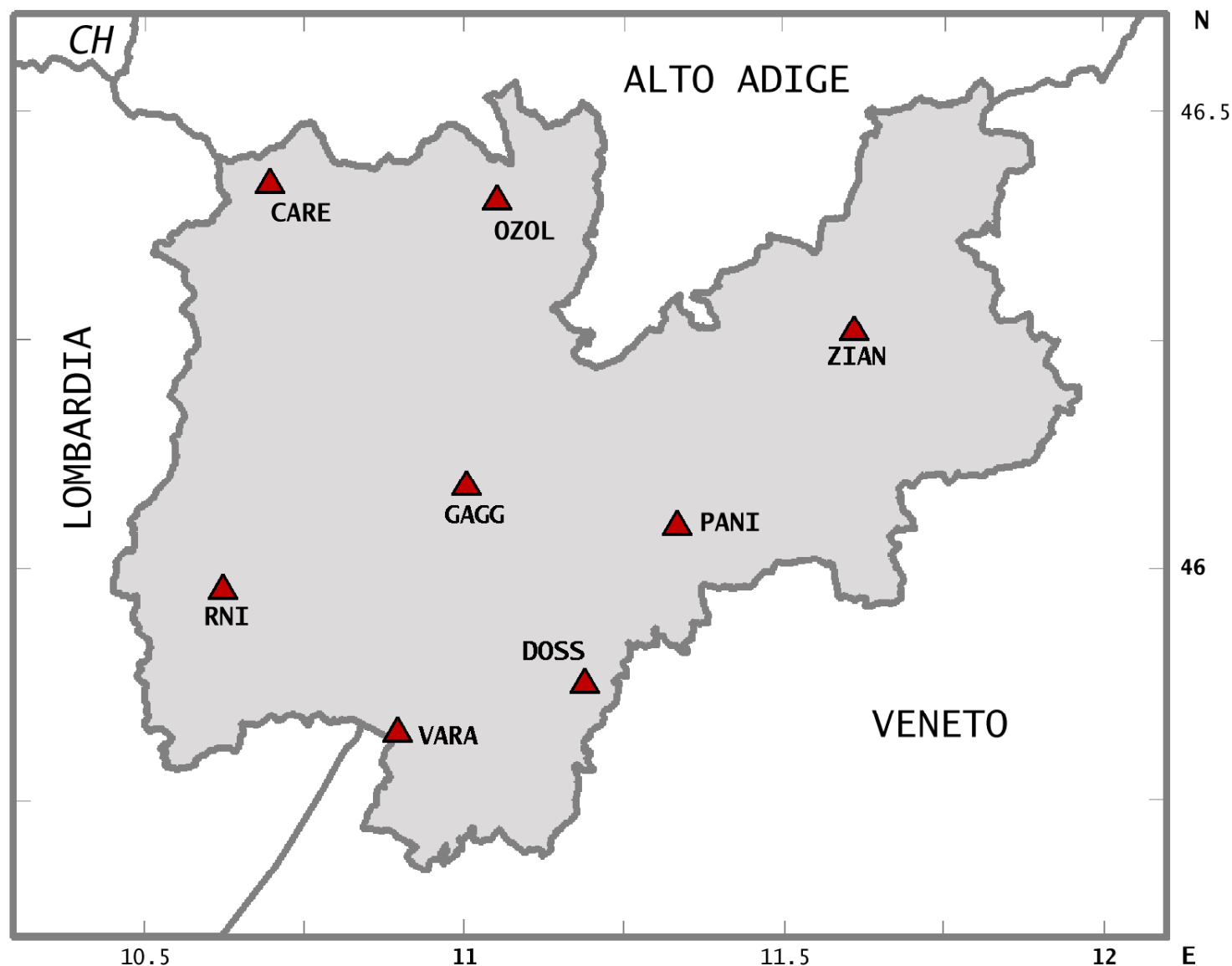
PROVINCIA AUTONOMA DI TRENTO

Servizio Geologico

Via Vienna, 17 38121 TRENTO

TEL 0461 492585 - FAX 0461 492521

E-mail: infoeq@retesismicatrento.org



RNI	Roncone	45.9802	10.6228	1913
VARA	Monte Varagna	45.8260	10.8965	1735
DOSS	Dosso del Sommo	45.8808	11.1884	1660
PANI	Monte Panarotta	46.0501	11.3341	1983
OZOL	Monte Ozolo	46.4040	11.0518	1219
CARE	Lago del Careser	46.4252	10.6945	2605
GAGG	Monte Gaggia	46.0835	10.9587	1617
ZIAN	Ziano di Fiemme	46.2764	11.5632	1154

EVENT HEADER

Program for earthquake parameters : Hypoellipse 2.0

Date : origin date of event

Time : origin time of event
(Greenwich Mean Time)

Geographical Coordinates : hypocentral coordinates
LAT N, LON E and Depth (degrees and km)

Magnitude : MA : mean amplitude magnitude
MD : mean duration magnitude

Location Errors : az1 : azimuth of axis 1 of error ellipsoid (deg.)
dp1 : dip of axis 1
se1 : length of ellipsoid semiaxis 1 (km)
az2 : azimuth of axis 2 of error ellipsoid (deg.)
dp2 : dip of axis 2
se2 : length of ellipsoid semiaxis 2 (km)
q : either error ellipsoid quality
A : very good
B : good
C : poor
D : bad

RMS : root mean square of residual

Type (of event) : 0 : local or near
10 : near/remote
1 to 3 : explosions (see Notes)

Epicentral Area : town,village or geographical zone;
between brackets Italian County or European Count.
station code failing hypocentral location

Notes : expl?? uncertain explosion
expl? probable explosion
expl! explosion
data from other seismological centers :
(N) is the NEIC (USGS)
(O) is the OGS-CRS (N-E Italy Seismic Network)
(I) is the INGV (Rome)
(S) is the Swiss Seismological Service

STATION DATA

st_name : station code
 RNI is 3D station
 VARA is 3D station
 DOSS is 3D station
 PANI is 3D station
 OZOL is 3D station
 CARE is 3D station
 GAGG is 3D station
 ZIAN is 3D station

p_rem : P remark : E = emersion; I = impetus
m : first motion direction of P-arrival:
 C = compression; D = dilatation

w_p : P-phase weighth code:
 0 = full weighth; 1 to 3 = partial weighth; 8 = no weighth

time_s : time of P-arrival (HH-MM-SS)
dist : distance (km)
azm : azimuth from epicenter to station (degrees)
s_sec : seconds of S-arrival
w_s : S-phase weighth code (see w_p for explanation)
ain : angle of ray leaving hypocenter (degrees)
mx_amp : maximum peak-to-peak amplitude (mm)
per : period of maximum amplitude (seconds)
p_calc : P travel time computed
p_std : P standard error
cf : corrected first motion symbol
f_p time : F-P time interval for f_mag (seconds)
p_res : residual of P-arrival (seconds)
s_std : S standard error
s_res : residual of S-arrival (seconds)
x_mag : local Richter magnitude for amplitude signal
f_mag : duration magnitude calculated according to empirical equation
 (Rebez, Renner, Slejko - 1984)
 $f_mag = a + b \log(t) + c \cdot d$
 t = average duration d = average epicentral distance
 a, b and c = empirical costant

QUATERLY BULLETTIN *January-March 2013*

DATE	TIME	Geogr. Coord.		DEPTH	Magnitude		LOCATION ERRORS						RMS	TYPE	EPICENTRAL AREA	NOTES
DD-MM-YY	HH/MM/SS	LAT N	LON E	h (Km)	MA	MD	az1	dp1	se1	az2	dp2	se2	q			

01/01/2013	23:58:26,02	45,5461	10,4911	12,4	1,6	2,4	0	0	1,4	90	0	1,4	C	0,17	0	MANERBA GARDA (BS)				M 1.4(O)	
st_name	p_rem	m	w_p	time_s	dist	azm	s_sec	w_s	ain	mx_amp	per	p_calc	p_std	cf	f_p_time	p_res	s_std	s_res	xmag	fmag	
VARA	e		3	23:58:33.89	44,3	45	40,18	3	106							0		0,15	1,7	1,6	
RNI	e		2	23:58:34.97	49,4	12	41,78	2	104							0,24		0,26	1,4	1,5	
DOSS	e	d	2	23:58:37.30	65,8	56			101							-0,17			1,7	1,8	
PANI	e		3	23:58:40.73	86,3	49			98							-0,2			1,7	1,5	

02/01/2013	03:14:40,02	45,9934	10,6893	5,65	1,7	2	0	0	0,5	90	0	0,5	B	0,15	0	BONDO (TN)			M, 1.6(O)		
st_name	p_rem	m	w_p	time_s	dist	azm	s_sec	w_s	ain	mx_amp	per	p_calc	p_std	cf	f_p_time	p_res	s_std	s_res	xmag	fmag	
RNI	i	c	0	03:14:41.46	5,3	255	42,43	2	137						42	0,11		0,04	1,9	2,4	
VARA	e	d	2	03:14:44.20	24,6	139			103							-0,14			1,6	1,3	
DOSS	e		2	03:14:47.00	40,7	108			98						37	-0,05			1,5	1,7	
CARE	e		2	03:14:48.50	47,9	1	54,43	2	97						33	0,23		-0,27	1,6	1,6	
OZOL	e	c	2	03:14:49.29	53,5	32	56,16	3	96						36	0,08		-0,22	1,7	1,5	

02/01/2013	03:23:48,46	45,9825	10,6556	8,22	0,6	1,5	0	0	1	90	0	1	C	0,1	0	RONCONE (TN)					
st_name	p_rem	m	w_p	time_s	dist	azm	s_sec	w_s	ain	mx_amp	per	p_calc	p_std	cf	f_p_time	p_res	s_std	s_res	xmag	fmag	
RNI	i	c	0	03:23:49.91	2,6	266	51,02	2	163						23	-0,03		-0,06	0,1	0,6	
VARA	e		2	03:23:52.94	25,5	133	56,79	3	108							-0,11		0,17	0	0	

02/01/2013	04:44:55,87	45,7235	10,3846	1,89	1,6	1,9	0	0	0,9	90	0	0,9	C	0,15	0	VESTONE (BS)			M 1.5(O)	
st_name	p_rem	m	w_p	time_s	dist	azm	s_sec	w_s	ain	mx_amp	per	p_calc	p_std	cf	f_p_time	p_res	s_std	s_res	xmag	fmag
RNI	i	d	0	04:45:01.92	34,1	33	6,19	2	93						36	0,22		-0,06	1,6	1,8
VARA	e		2	04:45:02.85	41,4	74	8,69	3	93							-0,11		0,21	1,7	1,5
CARE	e		2	04:45:09.78	81,6	17			91						27	-0,04			1,5	0

02/01/2013	15:12:37,77	46,3088	10,3118	1,24	1,1		0	0	0,7	90	0	0,7	D	0,11	0	GROSIO (SO)					
st_name	p_rem	m	w_p	time_s	dist	azm	s_sec	w_s	ain	mx_amp	per	p_calc	p_std	cf	f_p_time	p_res	s_std	s_res	xmag	fmag	
CARE	i	c	0	15:12:43.36	32,3	67	47,79	3	92							0,06		0,17	0	1,1	
OZOL	e	d	2	15:12:47.69	57,9	80	55,56	3	91							0,02		0,16	1	0,8	

02/01/2013	23:57:06,75	,	,											10	ALPI COZIE				M 2.9(I)			
st_name	p_rem	m	w_p	time_s	dist	azm	s_sec	w_s	ain	mx_amp	per	p_calc	p_std	cf	f_p_time	p_res	s_std	s_res	xmag	fmag		
RNI			3	23:57:06.75			47,53	3														
VARA			3	23:57:09.99			53,13	3							169							
DOSS			3	23:57:10.68			51,93	3							166							
OZOL			3	23:57:16.95			62,95	3							161							

03/01/2013	05:01:07,15	45,5040	11,8961	17,42	1,1		0	0	1,4	90	0	1,4	C	0,13	0	CAMPOSAMPIETRO (PD)					
st_name	p_rem	m	w_p	time_s	dist	azm	s_sec	w_s	ain	mx_amp	per	p_calc	p_std	cf	f_p_time	p_res	s_std	s_res	xmag	fmag	
DOSS	e		2	05:01:19.44	69,1	307	28,49	3	104							0,1		-0,35	0	0	
PANI	e		2	05:01:20.42	74,8	324			103							0,14			1,1	0	

04/01/2013	03:50:32,81	,	,											0	RNI					
st_name	p_rem	m	w_p	time_s	dist	azm	s_sec	w_s	ain	mx_amp	per	p_calc	p_std	cf	f_p_time	p_res	s_std	s_res	xmag	fmag
RNI	i	d	2	03:50:32.81			39,22	2							35					

QUATERLY BULLETTIN *January-March 2013*

DATE	TIME	Geogr. Coord.		DEPTH	Magnitude		LOCATION ERRORS						RMS	TYPE	EPICENTRAL AREA		NOTES	
DD-MM-YY	HH/MM/SS	LAT N	LON E	h (Km)	MA	MD	az1	dp1	se1	az2	dp2	se2	q					

04/01/2013	05:42:12,49	45,8195	11,0178	13,42	0,7	1,7	0	0	0,6	90	0	0,6	B	0,17	0	ROVERETO (TN)				
st_name	p_rem	m	w_p	time_s	dist	azm	s_sec	w_s	ain	mx_amp	per	p_calc	p_std	cf	f_p_time	p_res	s_std	s_res	xmag	fmag
VARA	i	c	0	05:42:15.50	9,5	274	17,73	2	145						23	0,2		0,24	0,3	0,3
DOSS	i	c	1	05:42:16.08	14,9	63	18,61	2	132						29	0,16		0,02	0,5	0,5
GAGG	e	c	1	05:42:18.08	29,7	351	22,16	2	114						23	0,02		-0,25	0,9	0

05/01/2013	07:47:29.85	,	,											10	ALPI PENNINE			M 2.4(I)		
st_name	p_rem	m	w_p	time_s	dist	azm	s_sec	w_s	ain	mx_amp	per	p_calc	p_std	cf	f_p_time	p_res	s_std	s_res	xmag	fmag
RNI			3	07:47:29.85			59,33	3							116					
CARE			3	07:47:30.36			58,17	3							117					
VARA			3	07:47:33.47			64,25	3							118					
GAGG			3	07:47:33.82			64,27	3							116					

05/01/2013	21:27:10,71	,	,											10	SANT' URBANO (PD)			M 3.1(O)		
st_name	p_rem	m	w_p	time_s	dist	azm	s_sec	w_s	ain	mx_amp	per	p_calc	p_std	cf	f_p_time	p_res	s_std	s_res	xmag	fmag
DOSS	e	c	1	21:27:10.71			22,65	2							172					
VARA	e	d	1	21:27:11.56			25,77	3							180					
PANI	e	c	2	21:27:13.03			27,02	3							178					
GAGG	i	d	2	21:27:15.27			30,79	2							172					
RNI			2	21:27:16.20			32,31	2							180					
OZOL			3	21:27:20.59			39,66	2							173					
CARE			3	21:27:22.55			42,39	2							168					

06/01/2013	06:34:32,97	45,7913	11,0853	13,6	1,5	1,8	0	0	0,5	90	0	0,5	B	0,22	0	VALLARSA (TN)				M 1.5(O)			
st_name	p_rem	m	w_p	time_s	dist	azm	s_sec	w_s	ain	mx_amp	per	p_calc	p_std	cf	f_p_time	p_res	s_std	s_res	xmag	fmag			
DOSS	e	c	0	06:34:36.42	12,7	39	38,7	1	137						25	0,27		0,07	1,6	1,7			
VARA	e	d	1	06:34:36.76	15,2	285	39,28	2	132							0,31		0,11	1,7	1,6			
GAGG	i	d	1	06:34:39.42	33,9	343	43,76	2	112							0,21		-0,33	1,6	1,6			
PANI	e		2	06:34:39.49	34,7	34	43,8	2	111							0,15		-0,52	1,4	1,5			
RNI	e	d	2	06:34:40.41	41,6	300			108							-0,04			1,1	1,4			
OZOL	e		2	06:34:44.94	68,1	358	53,74	3	101						32	0,11		-0,35	1,6	1,5			
CARE	e		2	06:34:46.30	76,5	337			100							0,05			1,4	1,4			

06/01/2013	09:06:17,13	,	,											10	PIVKA [SLO]				M 3.3(O)			
st_name	p_rem	m	w_p	time_s	dist	azm	s_sec	w_s	ain	mx_amp	per	p_calc	p_std	cf	f_p_time	p_res	s_std	s_res	xmag	fmag		
PANI			3	09:06:17.13			46,81	3							163							
DOSS			3	09:06:18.20			51,01	3							164							
GAGG	e	c	2	09:06:20.82			55,61	3							163							
VARA	e	c	2	09:06:21.05			56,44	3							166							
OZOL			3	09:06:21.24			56,02	3							162							
RNI			3	09:06:24.53			61,37	3							165							
CARE			3	09:06:24.61			63,2	3							162							

06/01/2013	09:23:50,75	45,7131	10,2013	8,9400	1,8	2	0	0	2	90	0	2	D	0,19	0	VAL TROMPIA (BS)				M 1.7(O)	
st_name	p_rem	m	w_p	time_s	dist	azm	s_sec	w_s	ain	mx_amp	per	p_calc	p_std	cf	f_p_time	p_res	s_std	s_res	xmag	fmag	
RNI	e	c	1	09:23:58.57	44,2	48	64,4	2	101						34	0,11		-0,08	2	2	
VARA	e		3	09:24:00.44	55,5	77			99							0,08			1,6	1,4	
GAGG	e		3	09:24:03.31	71,8	55			97							0,2			1,6	1,5	
DOSS	e		3	09:24:04.53	79	76			96							0,2			1,7	1,6	
CARE	e		2	09:24:05.73	87,9	26			96							-0,12			1,6	1,6	

QUATERLY BULLETTIN *January-March 2013*

DATE	TIME	Geogr. Coord.		DEPTH	Magnitude		LOCATION ERRORS						RMS	TYPE	EPICENTRAL AREA	NOTES
DD-MM-YY	HH/MM/SS	LAT N	LON E	h (Km)	MA	MD	az1	dp1	se1	az2	dp2	se2	q			

06/01/2013	21:55:42,63	46,2226	10,5743	1,58	0,6		0	0	0,3	90	0	0,3	C	0,11	0	VERMIGLIO (TN)					
st_name	p_rem	m	w_p	time_s	dist	azm	s_sec	w_s	ain	mx_amp	per	p_calc	p_std	cf	f_p_time	p_res	s_std	s_res	xmag	fmag	
CARE	e	3		21:55:46.91	24,3	23	49,89	2	94							0,11		-0,16	0,7	0,5	
RNI	e	2		21:55:47.42	27,2	172	50,81	3	93							0,14		-0,09	0,4	0,3	

07/01/2013	00:49:20,60	45,6126	10,8615	5,35	0,6	0,8	0	0	1,3	90	0	1,3	C	0,17	0	DOLCE' (VR)					
st_name	p_rem	m	w_p	time_s	dist	azm	s_sec	w_s	ain	mx_amp	per	p_calc	p_std	cf	f_p_time	p_res	s_std	s_res	xmag	fmag	
VARA	e		2	00:49:24.91	23,9	7	28,52	3	103							0,13		0,48	0,5	0,6	
DOSS	e		3	00:49:27.41	39,1	41	32,34	3	98							0,06		-0,28	0,8	0	

07/01/2013	04:21:14,02	,	,											10	ALPI COZIE	M 3.5(I)				
st_name	p_rem	m	w_p	time_s	dist	azm	s_sec	w_s	ain	mx_amp	per	p_calc	p_std	cf	f_p_time	p_res	s_std	s_res	xmag	fmag
RNI		3		04:21:14.02			51,28	3							202					
VARA		3		04:21:14.99			56,2	3							205					
DOSS		3		04:21:17.87			60,87	3							200					
GAGG		3		04:21:17.96			59,33	3							201					
CARE		3		04:21:18.52			61,52	3							199					
PANI		3		04:21:20.73			63,38	3							200					
OZOL		3		04:21:21.28			67,19	3							200					

07/01/2013	21:27:00,89	45,7031	10,8250		7			0	0	0,8	90	0	0,8	B	0,07	0	BRENZONE (VR)							
st_name	p_rem	m	w_p	time_s	dist	azm	s_sec	w_s	ain	mx_amp	per	p_calc	p_std	cf	f_p_time	p_res	s_std	s_res	xmag	fmag				
VARA	e		3	21:27:03.83	14,7	22	5,81	2	115							0,15		-0,05	0	0				

08/01/2013	11:06:18,20	46,6310	11,2823	18,03	0,8	1,4	0	0	0,2	90	0	0,2	B	0,02	0	MELTINA (BS)					
st_name	p_rem	m	w_p	time_s	dist	azm	s_sec	w_s	ain	mx_amp	per	p_calc	p_std	cf	f_p_time	p_res	s_std	s_res	xmag	fmag	
OZOL	e	2		11:06:24.35	30,9	215	29,04	2	120							0,04		-0,04	0,8	0,7	
CARE	e	2		11:06:27.37	50,4	243				110						0,02			1	0	

08/01/2013	11:13:29.73	,	,											0	VARA					
st_name	p_rem	m	w_p	time_s	dist	azm	s_sec	w_s	ain	mx_amp	per	p_calc	p_std	cf	f_p_time	p_res	s_std	s_res	xmag	fmag
VARA	i	c	2	11:13:29.73			31,55	3							46					

08/01/2013	20:00:10,79	,	,											10						
st_name	p_rem	m	w_p	time_s	dist	azm	s_sec	w_s	ain	mx_amp	per	p_calc	p_std	cf	f_p_time	p_res	s_std	s_res	xmag	fmag
VARA		3		20:00:10.79											100					
DOSS		3		20:00:11.53			24,73	3							96					
VARA		3		20:00:24.67											86					

08/01/2013	21:42:58,87	45,7278	10,4083	8,13	1,6	1,9	0	0	1,2	90	0	1,2	C	0,12	0	VESTONE (BS)			M 1.5(O)		
st_name	p_rem	m	w_p	time_s	dist	azm	s_sec	w_s	ain	mx_amp	per	p_calc	p_std	cf	f_p_time	p_res	s_std	s_res	xmag	fmag	
RNI	i	d	1	21:43:04.83	32,7	31	9,1	2	104						34	0,2		-0,02	1,6	1,8	
VARA	e		2	21:43:05.69	39,5	74	11,35	3	102						57	-0,07		0,21	1,7	1,5	
CARE	e		2	21:43:12.73	80,6	16			96						26	0,01			1,4	1,5	
OZOL	e		2	21:43:14.14	90,1	34			95							-0,19			1,3	1,3	

QUATERLY BULLETTIN *January-March 2013*

DATE	TIME	Geogr. Coord.		DEPTH	Magnitude		LOCATION ERRORS						RMS	TYPE	EPICENTRAL AREA	NOTES
DD-MM-YY	HH/MM/SS	LAT N	LON E	h (Km)	MA	MD	az1	dp1	se1	az2	dp2	se2	q			

09/01/2013	01:55:29,69	45,7289	10,4273	10,87	1,4	1,9	0	0	1,3	90	0	1,3	C	0,08	0	VESTONE (BS)					
st_name	p_rem	m	w_p	time_s	dist	azm	s_sec	w_s	ain	mx_amp	per	p_calc	p_std	cf	f_p_time	p_res	s_std	s_res	xmag	fmag	
RNI	i	d	1	01:55:35.61	31,9	28	39,85	2	109						40	0,17		-0,08	1,1	1,2	
CARE	e		2	01:55:43.49	80,1	15			98							-0,01			0	0	

09/01/2013	16:01:25,81	,	,											10						
st_name	p_rem	m	w_p	time_s	dist	azm	s_sec	w_s	ain	mx_amp	per	p_calc	p_std	cf	f_p_time	p_res	s_std	s_res	xmag	fmag
VARA			3	16:01:25.81			39,84	3							114					
RNI			3	16:01:27.59			42,43	3							114					
GAGG			3	16:01:29.79			46,97	3							114					

09/01/2013	20:46:39,65	45,7668	10,5506	2,11	1		0	0	0,6	90	0	0,6	C	0,16	0	BAGOLINO (BS)					
st_name	p_rem	m	w_p	time_s	dist	azm	s_sec	w_s	ain	mx_amp	per	p_calc	p_std	cf	f_p_time	p_res	s_std	s_res	xmag	fmag	
RNI	e		2	20:46:43.97	24,4	13	47,08	3	95							0,12		-0,04	0,7	0,8	
VARA	e		2	20:46:44.52	27,7	76	48,45	3	94							0,12		0,35	0,9	0,7	

10/01/2013	00:21:15,28	45,7951	10,5968	2,25	2,3	2,4	0	0	0,6	90	0	0,6	C	0,12	0	MAGASA (BS)			M 2.2(O)	
st_name	p_rem	m	w_p	time_s	dist	azm	s_sec	w_s	ain	mx_amp	per	p_calc	p_std	cf	f_p_time	p_res	s_std	s_res	xmag	fmag
RNI	e	d	1	00:21:19.05	20,7	6			96						60	0,2			2,3	2,4
VARA	e		2	00:21:19.51	23,5	82			95							0,18			2,5	2,3
GAGG	e	c	2	00:21:22.40	42,6	41			93						54	-0,17			2,3	2,3
DOSS	e	d	2	00:21:23.42	46,9	78	29,67	3	93						60	0,1		0,09	2,4	2,5
PANI	e		2	00:21:26.21	63,9	64	34,66	3	92						59	-0,01		-0,08	2,3	2,2
CARE	e		2	00:21:27.37	70,4	6			92						45	0,05			1,9	1,9
OZOL	e		2	00:21:28.25	76,2	27			92						62	-0,06			2,3	2,2

10/01/2013	15:09:58,97	45,7656	10,5429	1,96	1	1,4	0	0	0,6	90	0	0,6	C	0,16	0	BAGOLINO (BS)					
st_name	p_rem	m	w_p	time_s	dist	azm	s_sec	w_s	ain	mx_amp	per	p_calc	p_std	cf	f_p_time	p_res	s_std	s_res	xmag	fmag	
RNI	e		2	15:10:03.33	24,7	15	6,61	3	95							0,12		0,09	0,7	0,7	
VARA	e		2	15:10:03.87	28,3	76	7,87	3	94							0,05		0,27	0,8	0,7	

10/01/2013	23:52:53,84	46,6706	10,7895	7,75	0,8	1,1	0	0	0,6	90	0	0,6	C	0,1	0	PUNTA SALDURA (BZ)				
st_name	p_rem	m	w_p	time_s	dist	azm	s_sec	w_s	ain	mx_amp	per	p_calc	p_std	cf	f_p_time	p_res	s_std	s_res	xmag	fmag
CARE	e	d	1	23:52:59.02	28,3	194	62,54	2	105						19	0,17		-0,22	0,9	0,9
OZOL	e		2	23:53:00.33	35,9	146	4,92	2	102							0,21		-0,09	0,5	0,5

11/01/2013	06:23:27,48	46,0385	10,7433	6,36	0,9	1,6	0	0	0,6	90	0	0,6	B	0,13	0	BOLBENO (TN)				
st_name	p_rem	m	w_p	time_s	dist	azm	s_sec	w_s	ain	mx_amp	per	p_calc	p_std	cf	f_p_time	p_res	s_std	s_res	xmag	fmag
RNI	e	c	1	06:23:29.79	11,3	235	31,69	2	119							0,1		0,26	0,4	0,5
GAGG	e	c	1	06:23:30.49	17,4	73	33,03	2	110						22	-0,15		-0,08	0	0
DOSS	e		2	06:23:34.25	38,8	117			99							0,06			1	0
CARE	e		2	06:23:34.97	43	355			98							0,06			1,1	1

QUATERLY BULLETTIN *January-March 2013*

DATE	TIME	Geogr. Coord.		DEPTH	Magnitude		LOCATION ERRORS							RMS	TYPE	EPICENTRAL AREA	NOTES
DD-MM-YY	HH/MM/SS	LAT N	LON E	h (Km)	MA	MD	az1	dp1	se1	az2	dp2	se2	q				

11/01/2013	11:29:56.67	,	,											10	APPENNINO FORLIVESE	M 2.6(l)				
st_name	p_rem	m	w_p	time_s	dist	azm	s_sec	w_s	ain	mx_amp	per	p_calc	p_std	cf	f_p_time	p_res	s_std	s_res	xmag	fmag
DOSS		3		11:29:56.67			82,76	3							147					
VARA		3		11:29:56.76			80,26	3							147					
GAGG		3		11:29:59.95			87,07	3							146					
RNI		3		11:30:00.20			26,39	3							149					
OZOL		3		11:30:04.82			35,12	3							146					
CARE		3		11:30:06.20			36,18	3							142					

11/01/2013	21:57:45,17	46,5565	10,5886	4,16	0,4	1	0	0	0,5	90	0	0,5	B	0,06	0	CIMA VERTANA (BZ)							
st_name	p_rem	m	w_p	time_s	dist	azm	s_sec	w_s	ain	mx_amp	per	p_calc	p_std	cf	f_p_time	p_res	s_std	s_res	xmag	fmag			
CARE	e	d	1	21:57:48.17	16,9	150	50,42	2	104						16	0,03		-0,04	0,6	0			

13/01/2013	12:16:16,45	45,7701	10,8215	6,28	0,4	1,6	0	0	0,6	90	0	0,6	B	0,1	0	MALCESINE (VR)							
st_name	p_rem	m	w_p	time_s	dist	azm	s_sec	w_s	ain	mx_amp	per	p_calc	p_std	cf	f_p_time	p_res	s_std	s_res	xmag	fmag			
VARA	i	c	0	12:16:18.24	8,5	43				126					27	-0,02			0,4	0			

13/01/2013	13:31:02.66	,	,											10	ALPI ATESE			M 2.1(l)		
st_name	p_rem	m	w_p	time_s	dist	azm	s_sec	w_s	ain	mx_amp	per	p_calc	p_std	cf	f_p_time	p_res	s_std	s_res	xmag	fmag
CARE		3		13:31:02.66			10,34	3							80					
OZOL		3		13:31:04.41			13,77	3							79					
GAGG		3		13:31:10.47			22,49	3							77					
RNI		3		13:31:10.75			24,4	3							78					
VARA		3		13:31:15.11			30,78	3							77					

13/01/2013	13:34:28,44	,	,											0	CARE					
st_name	p_rem	m	w_p	time_s	dist	azm	s_sec	w_s	ain	mx_amp	per	p_calc	p_std	cf	f_p_time	p_res	s_std	s_res	xmag	fmag
CARE		3		13:34:28.44			29,68	3							46					

14/01/2013	02:48:10,14	,	,											0	RNI					
st_name	p_rem	m	w_p	time_s	dist	azm	s_sec	w_s	ain	mx_amp	per	p_calc	p_std	cf	f_p_time	p_res	s_std	s_res	xmag	fmag
RNI		3		02:48:10.14			11,05	2							32					

14/01/2013	02:59:17,51	46,5741	11,2856	23,74	0,9	1,6	0	0	0,7	90	0	0,7	B	0,12	0	TERLANO (BZ)				
st_name	p_rem	m	w_p	time_s	dist	azm	s_sec	w_s	ain	mx_amp	per	p_calc	p_std	cf	f_p_time	p_res	s_std	s_res	xmag	fmag
OZOL	i	c	1	02:59:23.64	26,1	223	28,13	2	122						26	0,16		0	0,9	0,8
CARE	e		2	02:59:26.73	48,1	250	33,31	2	98							0,2		-0,25	0	0
PANI	i	c	0	02:59:27.93	58,3	176			95							-0,08			0	0,8
DOSS	e		2	02:59:30.95	77,5	186			92							0,12			1,5	0

QUATERLY BULLETTIN *January-March 2013*

DATE	TIME	Geogr. Coord.		DEPTH	Magnitude		LOCATION ERRORS							RMS	TYPE	EPICENTRAL AREA	NOTES
DD-MM-YY	HH/MM/SS	LAT N	LON E	h (Km)	MA	MD	az1	dp1	se1	az2	dp2	se2	q				

15/01/2013	18:46:22.00		,	,											10	PIANURA PADANA EMIL.	M 2.2(I)			
st_name	p_rem	m	w_p	time_s	dist	azm	s_sec	w_s	ain	mx_amp	per	p_calc	p_std	cf	f_p_time	p_res	s_std	s_res	xmag	fmag
VARA		3		18:46:22.00			36,15	3							91					
DOSS		3		18:46:22.24			36,46	3							96					
RNI		3		18:46:24.50			41,33	3							90					
GAGG		3		18:46:24.98			42,6	3							96					
OZOL		3		18:46:30.95			51,17	3							92					

15/01/2013	18:53:29,16	,	,											10	PIANURA PADANA EMIL.	M 2.3(I)				
st_name	p_rem	m	w_p	time_s	dist	azm	s_sec	w_s	ain	mx_amp	per	p_calc	p_std	cf	f_p_time	p_res	s_std	s_res	xmag	fmag
DOSS		3		18:53:29.16			42,96	3							110					
VARA		3		18:53:29.50			43,4	3							116					
PANI		3		18:53:32.44			49,21	3							116					
RNI		3		18:53:32.61			50,06	3							118					
GAGG		3		18:53:33.24			50,59	3							111					
OZOL		3		18:53:38.55			59,93	3							114					
CARE		3		18:53:39.21			61,82	3							105					

16/01/2013	01:31:14,09	,	,											10						
st_name	p_rem	m	w_p	time_s	dist	azm	s_sec	w_s	ain	mx_amp	per	p_calc	p_std	cf	f_p_time	p_res	s_std	s_res	xmag	fmag
VARA		3		01:31:14.09			27,94	3							113					
DOSS		3		01:31:14.23			27,68	3							99					
PANI		3		01:31:17.12			33,31	3							107					
RNI		3		01:31:17.88			35,57	3							110					
GAGG		3		01:31:18.17			35,37	3							98					
OZOL		3		01:31:24.13			44,59	3							101					
CARE		3		01:31:25.00			46,35	3							98					

16/01/2013	05:11:38,99	46,4628	10,5351	4,43	1,2	1,2	0	0	0,6	90	0	0,6	C	0,19	0	GRAN ZEBRU' (SO)				M 1.0(O)	
st_name	p_rem	m	w_p	time_s	dist	azm	s_sec	w_s	ain	mx_amp	per	p_calc	p_std	cf	f_p_time	p_res	s_std	s_res	xmag	fmag	
CARE	e	c	0	05:11:41.54	13,2	109	43,21	2	109						15	0,17		-0,01	1,4	1,2	
OZOL	e	d	1	05:11:46.14	40,2	99	51,11	2	96						17	0,23		-0,2	0,8	0,9	
RNI	e		2	05:11:48.48	54	173			95							0,22			0,8	1	

16/01/2013	10:36:55,12	,	,											0	OZOL,CARE					
st_name	p_rem	m	w_p	time_s	dist	azm	s_sec	w_s	ain	mx_amp	per	p_calc	p_std	cf	f_p_time	p_res	s_std	s_res	xmag	fmag
OZOL			3	10:36:55.12			56,96	3							51					
CARE			3	10:36:55.16			56,97	3							51					

16/01/2013	15:53:22,36	45,7933	10,6190	11,68	1,6	1,6	0	0	0,7	90	0	0,7	C	0,12	0	VALVESTINO (BS)				
st_name	p_rem	m	w_p	time_s	dist	azm	s_sec	w_s	ain	mx_amp	per	p_calc	p_std	cf	f_p_time	p_res	s_std	s_res	xmag	fmag
VARA	e	d	2	15:53:26.42	21,9	80	29,86	2	118							-0,18		-0,04	1,6	1,4
RNI	e	d	1	15:53:26.54	20,8	1			119					27		0,1			1,5	1,6
DOSS	e	d	1	15:53:30.33	45,3	78			104							-0,03			1,7	1,6
PANI	e		2	15:53:33.27	62,5	63			101							0,05			1,4	1,3
CARE	e		2	15:53:34.37	70,4	5			99							-0,19			0	1,6

QUATERLY BULLETTIN *January-March 2013*

DATE	TIME	Geogr. Coord.		DEPTH	Magnitude		LOCATION ERRORS							RMS	TYPE	EPICENTRAL AREA	NOTES
DD-MM-YY	HH/MM/SS	LAT N	LON E	h (Km)	MA	MD	az1	dp1	se1	az2	dp2	se2	q				

17/01/2013	04:17:37,86	,	,											10						
st_name	p_rem	m	w_p	time_s	dist	azm	s_sec	w_s	ain	mx_amp	per	p_calc	p_std	cf	f_p_time	p_res	s_std	s_res	xmag	fmag
VARA		3		04:15:37.86			51,06	3							109					
DOSS		3		04:15:38.42			51,03	3							104					
OZOL		3		04:15:47.60			68,21	3							103					
CARE		3		04:15:48.26			69,66	3							103					

18/01/2013	01:31:50,99	45,9840	10,6786		7,05	0,6	1,5	0	0	0,6	90	0	0,6	C	0,06	0	RONCONE (TN)			
st_name	p_rem	m	w_p	time_s	dist	azm	s_sec	w_s	ain	mx_amp	per	p_calc	p_std	cf	f_p_time	p_res	s_std	s_res	xmag	fmag
RNI	e	2		01:31:52.43	4,4	265	53,52	2	148							0,02		0,01	0,3	0,5
VARA	e	2		01:31:55.22	24,4	136	58,8	3	106							-0,11		0,09	0	0,7

18/01/2013	08:32:52,90	,	,											0	MALCESINE (VR)			M 0.9(O)		
st_name	p_rem	m	w_p	time_s	dist	azm	s_sec	w_s	ain	mx_amp	per	p_calc	p_std	cf	f_p_time	p_res	s_std	s_res	xmag	fmag
VARA		3		08:32:52.90			55,6	3							42					

18/01/2013	14:36:43,60	46,5441	10,6831		6,51	0,7	1,4	0	0	0,6	90	0	0,6	C	0,05	0	CIMA VERTANA (BZ)			
st_name	p_rem	m	w_p	time_s	dist	azm	s_sec	w_s	ain	mx_amp	per	p_calc	p_std	cf	f_p_time	p_res	s_std	s_res	xmag	fmag
CARE	i	c	0	14:36:46.12	13,4	175	48,14	2	116						20	-0,02		0,01	0	0

19/01/2013	11:50:22,16	45,7923	11,4015		11,86	1,2	0,7	0	0	1,1	90	0	1,1	C	0,16	0	ARSIERO (BL)			
st_name	p_rem	m	w_p	time_s	dist	azm	s_sec	w_s	ain	mx_amp	per	p_calc	p_std	cf	f_p_time	p_res	s_std	s_res	xmag	fmag
DOSS	e	d	1	11:50:26.20	19,2	301	29,09	2	122						9	0,18		0,06	0,9	0,9
GAGG	e	2		11:50:30.27	47,2	313			104							-0,21			1,5	1,4

19/01/2013	21:25:14,77	45,7283	10,7451		15,62	0,8	0,9	0	0	0,5	90	0	0,5	B	0,08	0	BREZZONE (VR)		M 0.9(O)	
st_name	p_rem	m	w_p	time_s	dist	azm	s_sec	w_s	ain	mx_amp	per	p_calc	p_std	cf	f_p_time	p_res	s_std	s_res	xmag	fmag
VARA	e	2		21:25:18.77	16	47	21,57	2	134							0,17		-0,01	0,9	0,5
RNI	e	2		21:25:20.55	29,6	341	24,93	3	118							0,05		-0,03	0,4	0,5
DOSS	e	2		21:25:21.85	38,4	64			112							-0,01			0	0

20/01/2013	16:07:48,95	,	,											0	PANI					
st_name	p_rem	m	w_p	time_s	dist	azm	s_sec	w_s	ain	mx_amp	per	p_calc	p_std	cf	f_p_time	p_res	s_std	s_res	xmag	fmag
PANI		3		16:07:48.95			49,14	3							26					

20/01/2013	16:08:48,62	,	,											0	OZOL					
st_name	p_rem	m	w_p	time_s	dist	azm	s_sec	w_s	ain	mx_amp	per	p_calc	p_std	cf	f_p_time	p_res	s_std	s_res	xmag	fmag
OZOL		3		16:08:48.62			49,31	3							30					

QUATERLY BULLETTIN *January-March 2013*

DATE	TIME	Geogr. Coord.		DEPTH	Magnitude		LOCATION ERRORS						RMS	TYPE	EPICENTRAL AREA	NOTES
DD-MM-YY	HH/MM/SS	LAT N	LON E	h (Km)	MA	MD	az1	dp1	se1	az2	dp2	se2	q			

21/01/2013	01:07:32,22	45,9128	11,3386	16,22	1,1	1,7	0	0	0,8	90	0	0,8	C	0,14	0	LUSERNA (TN)					
st_name	p_rem	m	w_p	time_s	dist	azm	s_sec	w_s	ain	mx_amp	per	p_calc	p_std	cf	f_p_time	p_res	s_std	s_res	xmag	fmag	
DOSS	i	c	0	01:07:35.74	12,2	253	38,31	2	143						31	0,05		-0,09	0	0	
PANI	i	c	1	01:07:36.26	15,3	359	39,19	2	137						24	0,22		0,17	1	0,6	
GAGG	e		2	01:07:38.86	35	303	43,76	2	115							0,04		-0,21	0	0	
OZOL	e		2	01:07:42.73	58,9	338			105							0,07			0,8	0	

21/01/2013	01:43:20,90	,	,												10					
st_name	p_rem	m	w_p	time_s	dist	azm	s_sec	w_s	ain	mx_amp	per	p_calc	p_std	cf	f_p_time	p_res	s_std	s_res	xmag	fmag
PANI			3	01:43:20.90											227					
DOSS	i	d	2	01:43:20.97			62,09	3							222					
GAGG			3	01:43:24.01			66,88	3							223					
OZOL			3	01:43:25.31			68,97	3							223					
RNI			3	01:43:26.79			72,5	3							226					
CARE			3	01:43:28.70			73,65	3							217					

21/01/2013	09:30:59,33	,	,												0	OZOL				
st_name	p_rem	m	w_p	time_s	dist	azm	s_sec	w_s	ain	mx_amp	per	p_calc	p_std	cf	f_p_time	p_res	s_std	s_res	xmag	fmag
OZOL			3	09:30:59.33			59,59	3							33					

21/01/2013	11:21:12,64	,	,												10	AMARO (UD)	M 2.3(O)			
st_name	p_rem	m	w_p	time_s	dist	azm	s_sec	w_s	ain	mx_amp	per	p_calc	p_std	cf	f_p_time	p_res	s_std	s_res	xmag	fmag
PANI			3	11:21:12.64			30,55	2							93					
DOSS			3	11:21:14.67			34,34	2							97					
OZOL			3	11:21:14.94			35,26	3							97					
GAGG			3	11:21:16.17			37,29	3							96					
VARA			3	11:21:17.98			40,38	3							95					
CARE			3	11:21:18.66			41,1	3							95					
RNI			3	11:21:20.25			44,41	3							94					

21/01/2013	15:32:38,10	,	,												0	RNI				
st_name	p_rem	m	w_p	time_s	dist	azm	s_sec	w_s	ain	mx_amp	per	p_calc	p_std	cf	f_p_time	p_res	s_std	s_res	xmag	fmag
RNI	i	c	2	15:32:38.10			39,19	2							33					

22/01/2013	03:14:13,16	45,4821	10,1926	13	1,4		0	0	3,6	90	0	3,6	D	0,11	0	BAGNOLO MELLA (BS)				
st_name	p_rem	m	w_p	time_s	dist	azm	s_sec	w_s	ain	mx_amp	per	p_calc	p_std	cf	f_p_time	p_res	s_std	s_res	xmag	fmag
RNI	e		2	03:14:24.54	64,8	31			101							0,09			1,4	1,6
VARA	e		2	03:14:24.88	66,9	55			101							0,08			1,5	1,3

22/01/2013	10:32:36,44	,	,												10	APPENNINO PISTOIESE	M 2.7(I)			
st_name	p_rem	m	w_p	time_s	dist	azm	s_sec	w_s	ain	mx_amp	per	p_calc	p_std	cf	f_p_time	p_res	s_std	s_res	xmag	fmag
VARA			3	10:32:36.44			56,73	3							141					
DOSS			3	10:32:37.01			58,33	3							143					
RNI			3	10:32:39.30			61,18	3							141					
PANI			3	10:32:39.79			62,31	3							141					
GAGG			3	10:32:40.02			62,96	3							143					
OZOL			3	10:32:45.14			72,06	3							140					
CARE			3	10:32:45.55			72,2	3							139					

QUATERLY BULLETTIN *January-March 2013*

DATE	TIME	Geogr. Coord.		DEPTH	Magnitude		LOCATION ERRORS						RMS	TYPE	EPICENTRAL AREA	NOTES
DD-MM-YY	HH/MM/SS	LAT N	LON E	h (Km)	MA	MD	az1	dp1	se1	az2	dp2	se2	q			

22/01/2013	23:30:36,19	45,4415	11,5906	9,1	1,3	1,1	0	0	1,6	90	0	1,6	C	0,1	0	MONTEGALDA (VI)					
st_name	p_rem	m	w_p	time_s	dist	azm	s_sec	w_s	ain	mx_amp	per	p_calc	p_std	cf	f_p_time	p_res	s_std	s_res	xmag	fmag	
DOSS	e	d	1	23:30:46.17	57,9	327				99						-0,04			0	1,3	
PANI	e		1	23:30:48.24	70,6	344				97						-0,12			0,8	0,9	

23/01/2013	13:22:28,62	,	,											0	RNI					
st_name	p_rem	m	w_p	time_s	dist	azm	s_sec	w_s	ain	mx_amp	per	p_calc	p_std	cf	f_p_time	p_res	s_std	s_res	xmag	fmag
RNI			3	13:22:28.62			28,88	2							32					

24/01/2013	11:09:33,24	45,7635	10,8338	7,15	0,5		0	0	0,4	90	0	0,4	B	0,05	0	NAGO - TORBOLE (TN)						
st_name	p_rem	m	w_p	time_s	dist	azm	s_sec	w_s	ain	mx_amp	per	p_calc	p_std	cf	f_p_time	p_res	s_std	s_res	xmag	fmag		
VARA	e		2	11:09:35.18	8,5	35	36,6	2	130							0,04		-0,02	0,6	0,3		

25/01/2013	00:12:23,74	45,7780	10,5691	0,53	1,3		0	0	0,3	90	0	0,3	C	0,06	0	BAGOLINO (BS)					
st_name	p_rem	m	w_p	time_s	dist	azm	s_sec	w_s	ain	mx_amp	per	p_calc	p_std	cf	f_p_time	p_res	s_std	s_res	xmag	fmag	
RNI	e		2	00:12:27.74	22,9	10	30,83	3	91							0,08		0,11	0,9	1,2	
VARA	e		3	00:12:28.24	26	78			91							0,05			1,2	1	
GAGG	e		2	00:12:31.46	45,5	42	37,61	3	91							-0,05		0,03	1,5	1,5	
DOSS	e		2	00:12:32.22	49,5	77	38,85	3	91							0,02		0,05	1,3	0	

25/01/2013	03:42:00,06	,	,											0	RNI					
st_name	p_rem	m	w_p	time_s	dist	azm	s_sec	w_s	ain	mx_amp	per	p_calc	p_std	cf	f_p_time	p_res	s_std	s_res	xmag	fmag
RNI	i	c	2	03:42:00.06			1,11	3							39					

25/01/2013	14:48:47,05	,	,											10	GARFAGNANA				M 4.8(I)			
st_name	p_rem	m	w_p	time_s	dist	azm	s_sec	w_s	ain	mx_amp	per	p_calc	p_std	cf	f_p_time	p_res	s_std	s_res	xmag	fmag		
VARA	i	c	1	14:48:47.05			71,86	3							401							
DOSS	i	c	1	14:48:48.23			76,46	3							400							
RNI	i	c	1	14:48:49.04			76,31	3							393							
GAGG	i	c	1	14:48:50.60			79,12	3							401							
PANI	i	c	1	14:48:50.91			82,12	3							391							
ZIAN	i	c	1	14:48:55.08			87,21	3							401							
OZOL	i	c	1	14:48:55.80			90,7	3							388							
CARE	i	c	1	14:48:56.13			88,33	3							399							

25/01/2013	15:25:46,65	46,1175	11,2253	10,84	1,2	1,4	0	0	0,8	90	0	0,8	B	0,1	2	BASELGA DI P. (TN)			EXPL?	
st_name	p_rem	m	w_p	time_s	dist	azm	s_sec	w_s	ain	mx_amp	per	p_calc	p_std	cf	f_p_time	p_res	s_std	s_res	xmag	fmag
PANI	i	c	1	15:25:49.24	11,3	131	51,43	2	134						17	-0,08		0,03	1,2	1
GAGG	e	c	2	15:25:50.54	21	260	54,04	3	117						25	-0,14		0,21	0	1
DOSS	e	c	2	15:25:51.75	26,6	186			112							0,2			0	1,2
ZIAN	e	c	2	15:25:52.31	31,5	56			109							-0,03			1,1	0,9
CARE	e	c	1	15:25:55.86	53,1	310			102							-0,06			0	0

QUATERLY BULLETTIN *January-March 2013*

DATE	TIME	Geogr. Coord.		DEPTH	Magnitude		LOCATION ERRORS							RMS	TYPE	EPICENTRAL AREA	NOTES
DD-MM-YY	HH/MM/SS	LAT N	LON E	h (Km)	MA	MD	az1	dp1	se1	az2	dp2	se2	q				

25/01/2013	18:30:21,39	,	,											10	GARFAGNANA			M 2.8(I)		
st_name	p_rem	m	w_p	time_s	dist	azm	s_sec	w_s	ain	mx_amp	per	p_calc	p_std	cf	f_p_time	p_res	s_std	s_res	xmag	fmag
VARA		3		18:30:21.39			44,52	3							157					
DOSS		3		18:30:22.96			47,57	3							156					
RNI		3		18:30:23.47			47,71	3							156					
PANI		3		18:30:23.96											156					
GAGG		3		18:30:24.00			52,63	3							157					
ZIAN		3		18:30:28.17			61,03	3							152					

26/01/2013	15:17:04,95	45,5333	10,9758	11,92	0,8	2,3	0	0	1,2	90	0	1,2	C	0,08	0	GREZZANA (VR)							
st_name	p_rem	m	w_p	time_s	dist	azm	s_sec	w_s	ain	mx_amp	per	p_calc	p_std	cf	f_p_time	p_res	s_std	s_res	xmag	fmag			
VARA	e	2		15:17:11.07	33,1	349	15,66	3	110							0,1		0	1	0,9			

26/01/2013	23:02:07,32	,	,											10	GARFAGNANA				M 2.8(I)			
st_name	p_rem	m	w_p	time_s	dist	azm	s_sec	w_s	ain	mx_amp	per	p_calc	p_std	cf	f_p_time	p_res	s_std	s_res	xmag	fmag		
DOSS	e	c	2	23:02:07.32			35,56	3							159							
VARA			3	23:02:07.43			31,15	3							155							
RNI			3	23:02:09.39			35,72	3							157							
PANI			3	23:02:10.22			40,68	3							160							
GAGG			3	23:02:12.60			39,55	3							158							
ZIAN			3	23:02:14.20			42,08	3							154							
OZOL			3	23:02:14.73											157							
CARE			3	23:02:15.23											158							

27/01/2013	07:32:38,12	,	,											10						
st_name	p_rem	m	w_p	time_s	dist	azm	s_sec	w_s	ain	mx_amp	per	p_calc	p_std	cf	f_p_time	p_res	s_std	s_res	xmag	fmag
VARA		3		07:32:38.12			53,42	3							111					
DOSS		3		07:32:39.05			53,2	3							116					
RNI		3		07:32:42.25			59,84	3							110					
GAGG		3		07:32:42.67			60,01	3							114					
ZIAN		3		07:32:45.91			64,71	3							111					
OZOL		3		07:32:47.86			69,6	3							111					
CARE		3		07:32:48.61											112					

27/01/2013	10:18:07,78	,	,											10						
st_name	p_rem	m	w_p	time_s	dist	azm	s_sec	w_s	ain	mx_amp	per	p_calc	p_std	cf	f_p_time	p_res	s_std	s_res	xmag	fmag
OZOL		3		10:18:07.78			22,67	3												
ZIAN		3		10:18:08.01			21,95	3												
CARE		3		10:18:09.38																
PANI		3		10:18:12.62			30,27	3												
GAGG		3		10:18:13.26			32,05	3												
DOSS		3		10:18:15.83			35,83	3												
RNI		3		10:18:16.89			38,66	3												
VARA		3		10:18:17.74			40,07	3												

28/01/2013	02:23:31,85	,	,											10	GARFAGNANA			M 2.3(I)		
st_name	p_rem	m	w_p	time_s	dist	azm	s_sec	w_s	ain	mx_amp	per	p_calc	p_std	cf	f_p_time	p_res	s_std	s_res	xmag	fmag
VARA			3	02:23:31.85			54,77	3								115				
DOSS			3	02:23:33.17			58,34	3								117				
RNI			3	02:23:33.61			58,47	3								119				

QUATERLY BULLETTIN *January-March 2013*

DATE	TIME	Geogr. Coord.		DEPTH	Magnitude		LOCATION ERRORS						RMS	TYPE	EPICENTRAL AREA	NOTES
DD-MM-YY	HH/MM/SS	LAT N	LON E	h (Km)	MA	MD	az1	dp1	se1	az2	dp2	se2	q			

28/01/2013	07:23:07,88	,	,											0	PANI					
st_name	p_rem	m	w_p	time_s	dist	azm	s_sec	w_s	ain	mx_amp	per	p_calc	p_std	cf	f_p_time	p_res	s_std	s_res	xmag	fmag
PANI		3		07:23:07.88			8,26	3							32					

28/01/2013	08:37:58,54	,	,											0	CARE					
st_name	p_rem	m	w_p	time_s	dist	azm	s_sec	w_s	ain	mx_amp	per	p_calc	p_std	cf	f_p_time	p_res	s_std	s_res	xmag	fmag
CARE		3		08:37:58.54			59,64	3							29					

28/01/2013	14:46:56,26	46,6053	10,3136	8,56	1		0	0	0,8	90	0	0,8	C	0,05	0	ACQUA DEL GALLO (SO)				
st_name	p_rem	m	w_p	time_s	dist	azm	s_sec	w_s	ain	mx_amp	per	p_calc	p_std	cf	f_p_time	p_res	s_std	s_res	xmag	fmag
CARE	e		2	14:47:02.61	35,6	124	7,36	3	104							0,08		-0,05	0	1,2

28/01/2013	15:10:54.05	,	,											10	PIANURA PADANA EMIL.	M 2.4(I)				
st_name	p_rem	m	w_p	time_s	dist	azm	s_sec	w_s	ain	mx_amp	per	p_calc	p_std	cf	f_p_time	p_res	s_std	s_res	xmag	fmag
VARA		3		15:10:54.05			69,26	3							119					
DOSS		3		15:10:54.99			69,33	3							119					
PANI		3		15:10:57.67			74,45	3							119					
RNI		3		15:10:57.77			75,85	3							120					
GAGG		3		15:10:58.53			75,9	3							119					
ZIAN		3		15:11:01.69			20,44	3							122					
OZOL		3		15:11:03.74			24,94	3							116					
CARE		3		15:11:04.34			26,56	3							116					

28/01/2013	20:27:28,12	,	,											10	MAR LIGURE				M 2.9(I)	
st_name	p_rem	m	w_p	time_s	dist	azm	s_sec	w_s	ain	mx_amp	per	p_calc	p_std	cf	f_p_time	p_res	s_std	s_res	xmag	fmag
VARA		3		20:27:28.12			64,16	3							159					
RNI		3		20:27:28.67											160					
DOSS		3		20:27:30.56											159					
GAGG		3		20:27:31.25			62,96	3							160					
PANI		3		20:27:33.43											160					
CARE		3		20:27:34.32											161					
ZIAN		3		20:27:37.68			72,76	3							162					

29/01/2013	03:12:23,25	45,9538	11,8011	8,01	0,7	1	0	0	2,9	90	0	2,9	D	0,06	0	ARSIE' (VI)				
st_name	p_rem	m	w_p	time_s	dist	azm	s_sec	w_s	ain	mx_amp	per	p_calc	p_std	cf	f_p_time	p_res	s_std	s_res	xmag	fmag
ZIAN	e	2		03:12:30.39	40,3	333	35,69	2	101							0,12		-0,06	0,8	0,8

29/01/2013	08:01:15,24	46,3681	11,0533	4,19	1,2		0	0	1,3	90	0	1,3	B	0,15	0	SANZENO (TN)					
st_name	p_rem	m	w_p	time_s	dist	azm	s_sec	w_s	ain	mx_amp	per	p_calc	p_std	cf	f_p_time	p_res	s_std	s_res	xmag	fmag	
OZOL	i	c	1	08:01:15.96	3,9	358	17,11	2	137							-0,26		0,13	1,3	1,3	
CARE	e		2	08:01:20.09	28,1	283			98							0			1,1	0	
GAGG	e	c	2	08:01:20.75	32,5	193	25,39	3	97							-0,08		0,19	1,3	0	

29/01/2013	14:05:36,67	46,5740	10,2830	9,27	0,9	1,1	0	0	1,8	90	0	1,8	C	0,11	0	SAN GIACOMO FR. (SO)				
st_name	p_rem	m	w_p	time_s	dist	azm	s_sec	w_s	ain	mx_amp	per	p_calc	p_std	cf	f_p_time	p_res	s_std	s_res	xmag	fmag
CARE	e	2		14:05:43.19	35,9	118	47,81	3	104							0,18		-0,14	0	0

QUATERLY BULLETTIN *January-March 2013*

DATE	TIME	Geogr. Coord.		DEPTH	Magnitude		LOCATION ERRORS						RMS	TYPE	EPICENTRAL AREA	NOTES
DD-MM-YY	HH/MM/SS	LAT N	LON E	h (Km)	MA	MD	az1	dp1	se1	az2	dp2	se2	q			

29/01/2013	20:50:05,95	,	,											10	MAR LIGURE			M 3.1(I)		
st_name	p_rem	m	w_p	time_s	dist	azm	s_sec	w_s	ain	mx_amp	per	p_calc	p_std	cf	f_p_time	p_res	s_std	s_res	xmag	fmag
VARA		3		20:50:05.95			33,57	3												
RNI		3		20:50:06.21			35,47	3												
DOSS		3		20:50:08.77																
GAGG		3		20:50:09.06			39,34	3												
PANI		3		20:50:11.82			42,97	3												
CARE		3		20:50:12.04			46,39	3												
OZOL		3		20:50:13.93			49,16	3												
ZIAN		3		20:50:15.34			50,16	3												

29/01/2013	21:18:20,77	,	,											10	MAR LIGURE			M 3.1(I)		
st_name	p_rem	m	w_p	time_s	dist	azm	s_sec	w_s	ain	mx_amp	per	p_calc	p_std	cf	f_p_time	p_res	s_std	s_res	xmag	fmag
VARA		3		21:18:20.77			48,8	3												
RNI		3		21:18:21.11			50,19	3												
DOSS		3		21:18:23.21			53,32	3												
GAGG		3		21:18:23.96			55,11	3												
PANI		3		21:18:26.25			57,96	3												
CARE		3		21:18:26.83																
OZOL		3		21:18:28.84			63,05	3												
ZIAN		3		21:18:30.16			65,15	3												

30/01/2013	00:33:09,36	45,9660	11,8103		5,83	1,8	2	0	0	0,5	90	0	0,5	B	0,2	0	ARSIE' (BL)			M 1.5(O)	
st_name	p_rem	m	w_p	time_s	dist	azm	s_sec	w_s	ain	mx_amp	per	p_calc	p_std	cf	f_p_time	p_res	s_std	s_res	xmag	fmag	
ZIAN	e		2	00:33:16.07	39,4	331				98					70	-0,11			2	2	
PANI	e		1	00:33:16.24	38	284	20,86	2	99						31	0,3		-0,21	1,8	1,4	
DOSS	e	d	1	00:33:17.74	49,2	259				97					31	-0,09			1,6	1,7	
GAGG	e		2	00:33:20.92	67,2	281				95						0,02			0	1,7	
OZOL	e		2	00:33:22.55	76,1	310				94						0,13			1,7	1,8	

30/01/2013	13:07:56,40	,	,											10	PIANURA PADANA EMIL.	M 2.4(I)				
st_name	p_rem	m	w_p	time_s	dist	azm	s_sec	w_s	ain	mx_amp	per	p_calc	p_std	cf	f_p_time	p_res	s_std	s_res	xmag	fmag
DOSS		3	13:07:56.40				71,77	3							105					
VARA		3	13:07:56.60				72,03	3							105					
PANI		3	13:07:59.30				76,98	3							104					
RNI		3	13:08:00.58				19,04	3							105					
GAGG		3	13:08:00.68				19,39	3							105					
ZIAN		3	13:08:03.21												105					
OZOL		3	13:08:06.02				29,04	3							104					
CARE		3	13:08:07.58				30,51	3							104					

30/01/2013	23:42:30,49	,	,											10	GARFAGNANA			M 3.3(I)		
st_name	p_rem	m	w_p	time_s	dist	azm	s_sec	w_s	ain	mx_amp	per	p_calc	p_std	cf	f_p_time	p_res	s_std	s_res	xmag	fmag
DOSS		3	23:42:30.49				58,57	3							189					
VARA		3	23:42:31.20				55,69	3							188					
RNI		3	23:42:32.78				59,55	3							188					
GAGG		3	23:42:33.39				63,17	3							187					
PANI		3	23:42:33.76				64,03	3							189					
ZIAN		3	23:42:37.76				72,02	3							190					
OZOL		3	23:42:38.75				73,64	3							185					
CARE		3	23:42:38.85				72,76	3							188					

QUATERLY BULLETTIN *January-March 2013*

DATE	TIME	Geogr. Coord.		DEPTH	Magnitude		LOCATION ERRORS						RMS	TYPE	EPICENTRAL AREA	NOTES
DD-MM-YY	HH/MM/SS	LAT N	LON E	h (Km)	MA	MD	az1	dp1	se1	az2	dp2	se2	q			

31/01/2013	04:36:45,99	,	,											10	AUSTRIA	M 2.5(I)				
st_name	p_rem	m	w_p	time_s	dist	azm	s_sec	w_s	ain	mx_amp	per	p_calc	p_std	cf	f_p_time	p_res	s_std	s_res	xmag	fmag
OZOL			3	04:36:45.99			59,39	2							114					
ZIAN			3	04:36:46.31			59,52	3							121					
CARE			3	04:36:47.57			62,66	3							110					
PANI			3	04:36:50.76			67,74	3							112					
GAGG			3	04:36:51.52			69,02	2							111					
DOSS	i	c	2	04:36:54.06			73,09	2							110					
RNI			3	04:36:55.03			74,9	3							114					
VARA			3	04:36:56.19			77,66	3							114					

31/01/2013	06:06:49,74	45,8630	10,9501	12,99	0,1		0	0	0,5	90	0	0,5	C	0,03	0	MORI (TN)				
st_name	p_rem	m	w_p	time_s	dist	azm	s_sec	w_s	ain	mx_amp	per	p_calc	p_std	cf	f_p_time	p_res	s_std	s_res	xmag	fmag
VARA	e	2		06:06:52.22	5,9	225	54,06	2	156							0,05		-0,02	0	0,1
DOSS	e	2		06:06:53.61	18,6	84			125							-0,01			0	0
GAGG	e	2		06:06:54.45	24,5	2	58,2	2	118							-0,03		0,02	0	0

31/01/2013	21:48:24,31	45,7240	11,0546	9,07	0,8	1,9	0	0	0,7	90	0	0,7	C	0,17	0	ALA (TN)					
st_name	p_rem	m	w_p	time_s	dist	azm	s_sec	w_s	ain	mx_amp	per	p_calc	p_std	cf	f_p_time	p_res	s_std	s_res	xmag	fmag	
DOSS	e	d	1	21:48:28.33	20,2	31	31,15	2	114							0,23		0,1	0,8	0	
GAGG	e	d	2	21:48:31.56	40,6	349	36,89	2	103							0,14		-0,09	0	0	
PANI	e		2	21:48:31.77	42,3	31	36,93	2	102							0,06		-0,55	0,7	0,5	

01/02/2013	00:48:52,59	45,7210	10,7791	6,03	0,7	1	0	0	1,4	90	0	1,4	C	0,07	0	BRENZONE (VR)							
st_name	p_rem	m	w_p	time_s	dist	azm	s_sec	w_s	ain	mx_amp	per	p_calc	p_std	cf	f_p_time	p_res	s_std	s_res	xmag	fmag			
DOSS	e	2		00:48:58.88	36,4	61			99							-0,02			0	0			

01/02/2013	04:43:54.52													10	PIANURA PADANA EMIL.				M 2.4(I)	
st_name	p_rem	m	w_p	time_s	dist	azm	s_sec	w_s	ain	mx_amp	per	p_calc	p_std	cf	f_p_time	p_res	s_std	s_res	xmag	fmag
VARA			3	04:43:54.52			69,17	3							103					
DOSS	e	d	2	04:43:54.84			69,01	3							106					
PANI			3	04:43:58.19			74,86	3							102					
RNI			3	04:43:58.61			76,35	3							102					
GAGG	i	d	2	04:43:59.13			76,56	3							103					
ZIAN			3	04:44:02.59			22,01	3							104					
OZOL			3	04:44:04.17			26,24	2							101					
CARE			3	04:44:04.98			27,08	3							104					

01/02/2013	17:04:38,61	45,5400	10,8196	7,81	1,3	2	0	0	2,9	90	0	2,9	D	0,18	0	BARDOLINO (VR)					
st_name	p_rem	m	w_p	time_s	dist	azm	s_sec	w_s	ain	mx_amp	per	p_calc	p_std	cf	f_p_time	p_res	s_std	s_res	xmag	fmag	
DOSS	e		2	17:04:46.70	47,5	37				99						-0,13			1,2	1,3	

01/02/2013	23:54:17,64	46,4106	10,5523	6,57	0,4	1,2	0	0	0,6	90	0	0,6	C	0,04	0	S. CATERINA V. (SO)					
st_name	p_rem	m	w_p	time_s	dist	azm	s_sec	w_s	ain	mx_amp	per	p_calc	p_std	cf	f_p_time	p_res	s_std	s_res	xmag	fmag	
OZOL	e		2	23:54:24.30	38,4	91				100						-0,01			0	0,4	

QUATERLY BULLETTIN *January-March 2013*

DATE	TIME	Geogr. Coord.		DEPTH	Magnitude		LOCATION ERRORS							RMS	TYPE	EPICENTRAL AREA	NOTES
DD-MM-YY	HH/MM/SS	LAT N	LON E	h (Km)	MA	MD	az1	dp1	se1	az2	dp2	se2	q				

02/02/2013	06:17:35,92	,	,											10						
st_name	p_rem	m	w_p	time_s	dist	azm	s_sec	w_s	ain	mx_amp	per	p_calc	p_std	cf	f_p_time	p_res	s_std	s_res	xmag	fmag
RNI		3		06:17:35.92			63,58	3								120				
CARE		3		06:17:37.31			65,08	3								117				
GAGG		3		06:17:39.43			69,53	3								116				
VARA		3		06:17:39.78			69,01	3								120				
PANI		3		06:17:43.02			77,14	3								115				
DOSS		3		06:17:44.92			74,77	3								113				

02/02/2013	13:36:11,74	,	,											10	SITTERSDORF [A]			M 4.3(O)		
st_name	p_rem	m	w_p	time_s	dist	azm	s_sec	w_s	ain	mx_amp	per	p_calc	p_std	cf	f_p_time	p_res	s_std	s_res	xmag	fmag
ZIAN	i	c	2	13:36:11.74			43,36	3							312					
PANI			3	13:36:13.89			48,81	3							308					
DOSS	e	d	2	13:36:15.31			53,37	3							308					
OZOL	e	c	2	13:36:16.54			56,6	3							299					
GAGG	e	d	2	13:36:17.22			56,58	3							304					
VARA			3	13:36:18.53			62,31	3							311					
CARE	e	d	2	13:36:19.21			62,07	3							307					
RNI			2	13:36:20.98			66,23	3							306					

03/02/2013	07:47:25,92	46,0525	12,0996	9,65	1,3	1,6	0	0	1,1	90	0	1,1	B	0,1	0	MEL (BL)				
st_name	p_rem	m	w_p	time_s	dist	azm	s_sec	w_s	ain	mx_amp	per	p_calc	p_std	cf	f_p_time	p_res	s_std	s_res	xmag	fmag
ZIAN	e	c	1	07:47:34.27	48,3	301			101							-0,08			1,2	0,8

04/02/2013	09:54:06,73	45,6120	9,9961	13,64	1,5		0	0	5,5	90	0	5,5	D	0,13	0	ERBOSCO (BS)				
st_name	p_rem	m	w_p	time_s	dist	azm	s_sec	w_s	ain	mx_amp	per	p_calc	p_std	cf	f_p_time	p_res	s_std	s_res	xmag	fmag
RNI	e	2		09:54:17.82	63,7	50				102						-0,04			1,3	1,5
CARE	e	2		09:54:24.84	105,4	31				59						-0,03			0	1,7

04/02/2013	17:30:03,59	,	,											10						
st_name	p_rem	m	w_p	time_s	dist	azm	s_sec	w_s	ain	mx_amp	per	p_calc	p_std	cf	f_p_time	p_res	s_std	s_res	xmag	fmag
VARA		3		17:30:03.59			18,79	3							101					
DOSS		3		17:30:04.23			17,84	3							100					
PANI		3		17:30:06.91			23,71	3							102					
RNI		3		17:30:07.59			24,99	3							100					
GAGG		3		17:30:07.78			25,32	3							97					
ZIAN		3		17:30:10.86			29,54	3							100					
OZOL		3		17:30:13.69			34,91	2							97					

06/02/2013	01:35:54,19	,	,											10	ZONA FORLI'	M 2.7(I)				
st_name	p_rem	m	w_p	time_s	dist	azm	s_sec	w_s	ain	mx_amp	per	p_calc	p_std	cf	f_p_time	p_res	s_std	s_res	xmag	fmag
DOSS			3	01:35:54.19			75,55	3												
VARA			3	01:35:54.65			76,44	3												
PANI			3	01:35:56.54			79,2	3												
GAGG			3	01:35:57.92			82,77	3												
RNI			3	01:35:58.29																
ZIAN			3	01:35:59.26																
OZOL			3	01:36:02.43																
CARE			3	01:36:04.07																

QUATERLY BULLETTIN *January-March 2013*

DATE	TIME	Geogr. Coord.		DEPTH	Magnitude		LOCATION ERRORS							RMS	TYPE	EPICENTRAL AREA	NOTES
DD-MM-YY	HH/MM/SS	LAT N	LON E	h (Km)	MA	MD	az1	dp1	se1	az2	dp2	se2	q				

06/02/2013	01:37:19,38	,	,											10	ZONA FORLI'	M 3.5(l)				
st_name	p_rem	m	w_p	time_s	dist	azm	s_sec	w_s	ain	mx_amp	per	p_calc	p_std	cf	f_p_time	p_res	s_std	s_res	xmag	fmag
DOSS	e	d	2	01:37:19.38			42,6	3							162					
VARA	e	d	2	01:37:19.92			41,74	3							174					
PANI			3	01:37:21.52			44,14	2							170					
GAGG	e	d	2	01:37:22.90			48	2							161					
RNI			3	01:37:23.05			48,87	3							171					
ZIAN	e	d	2	01:37:24.30			49,1	3							174					
OZOL			3	01:37:27.32			55,48	3							165					
CARE	i	d	2	01:37:29.20			57,29	3							158					

06/02/2013	20:14:33,12	,	,												10	APPENNINO FORLIVESE	M 2.5(l)			
st_name	p_rem	m	w_p	time_s	dist	azm	s_sec	w_s	ain	mx_amp	per	p_calc	p_std	cf	f_p_time	p_res	s_std	s_res	xmag	fmag
DOSS			3	20:14:33.12			56,43	3							127					
VARA			3	20:14:33.60			55,66	3							135					
PANI			3	20:14:35.26			58,42	3							132					
GAGG			3	20:14:36.77			61,83	3							128					
RNI			3	20:14:36.97			62,37	3							133					
ZIAN			3	20:14:37.98			62,9	3							134					
OZOL			3	20:14:41.37			69,16	3							128					
CARE			3	20:14:42.93			70,98	3							124					

07/02/2013	15:48:18,21	46,6060	10,2753	10,52	0,8		0	0	2,4	90	0	2,4	C	0,14	0	ACQUA DEL GALLO (SO)				
st_name	p_rem	m	w_p	time_s	dist	azm	s_sec	w_s	ain	mx_amp	per	p_calc	p_std	cf	f_p_time	p_res	s_std	s_res	xmag	fmag
CARE	e		2	15:48:25.18	38,2	122	30,06	3	105							0,2		-0,2	1,1	1

07/02/2013	16:41:44,19	,	,											0	OZOL					
st_name	p_rem	m	w_p	time_s	dist	azm	s_sec	w_s	ain	mx_amp	per	p_calc	p_std	cf	f_p_time	p_res	s_std	s_res	xmag	fmag
OZOL			3	16:41:44.19			47,11	3							38					

07/02/2013	19:06:55,10	,	,												10	FRIGNANO			M 2.3(l)		
st_name	p_rem	m	w_p	time_s	dist	azm	s_sec	w_s	ain	mx_amp	per	p_calc	p_std	cf	f_p_time	p_res	s_std	s_res	xmag	fmag	
VARA			3	19:06:55.10			77,53	3							98						
DOSS			3	19:06:56.45			82,38	3							99						
RNI			3	19:06:57.21			78,97	3							99						
GAGG			3	19:06:58.20			82,55	3							99						
OZOL			3	19:07:03.30											98						
ZIAN			3	19:07:03.49											98						

08/02/2013	04:14:48,26	45,5346	10,3035	16,45	1,6	2	0	0	1,4	90	0	1,4	C	0,18	0	BRESCIA					
st_name	p_rem	m	w_p	time_s	dist	azm	s_sec	w_s	ain	mx_amp	per	p_calc	p_std	cf	f_p_time	p_res	s_std	s_res	xmag	fmag	
RNI	e		2	04:14:58.28	55,5	27	65,78	3	107							0,13		-0,09	1,2	1,2	
VARA	e		2	04:14:58.33	56,4	55	66,39	3	106							0,02		0,24	1,4	1,2	
DOSS	e	c	2	04:15:01.70	78,9	61			102							-0,34			1,6	0	
GAGG	e	d	1	04:15:02.16	79,5	40	12,84	3	102							0,02		-0,12	1,8	0	
CARE	e		2	04:15:05.93	103,5	17			59							0,04			0	1,5	
OZOL	e	d	2	04:15:07.45	112,6	31			59							0,22			1,5	1,3	
ZIAN	e		2	04:15:09.50	127,9	50			59							0,03			1,5	1,5	

QUATERLY BULLETTIN *January-March 2013*

DATE	TIME	Geogr. Coord.		DEPTH	Magnitude		LOCATION ERRORS						RMS	TYPE	EPICENTRAL AREA	NOTES
DD-MM-YY	HH/MM/SS	LAT N	LON E	h (Km)	MA	MD	az1	dp1	se1	az2	dp2	se2	q			

08/02/2013	22:54:16,43	46,0316	10,5743	4,25	0,9	1,6	0	0	0,5	90	0	0,5	B	0,08	0	BREGUZZO (TN)					
st_name	p_rem	m	w_p	time_s	dist	azm	s_sec	w_s	ain	mx_amp	per	p_calc	p_std	cf	f_p_time	p_res	s_std	s_res	xmag	fmag	
RNI	i	d	0	22:54:17.72	6,8	146	18,74	2	122						21	-0,07		-0,12	0,8	0,8	
GAGG	e		2	22:54:21.57	30,3	79	25,83	2	98							-0,09		0,1	0	0	

09/02/2013	07:25:06,59	,	,											0	VARA					
st_name	p_rem	m	w_p	time_s	dist	azm	s_sec	w_s	ain	mx_amp	per	p_calc	p_std	cf	f_p_time	p_res	s_std	s_res	xmag	fmag
VARA		3		07:25:06.59			7,12	2							26					

09/02/2013	15:08:26,53	,	,											1	PANI				EXPL??			
st_name	p_rem	m	w_p	time_s	dist	azm	s_sec	w_s	ain	mx_amp	per	p_calc	p_std	cf	f_p_time	p_res	s_std	s_res	xmag	fmag		
PANI		3		15:08:26.53			27,78	3							21							

09/02/2013	20:34:35,65	45,8891	12,0558	9,3	1	1,7	0	0	1,2	90	0	1,2	C	0,13	0	VALDOBBIADENE (TV)					
st_name	p_rem	m	w_p	time_s	dist	azm	s_sec	w_s	ain	mx_amp	per	p_calc	p_std	cf	f_p_time	p_res	s_std	s_res	xmag	fmag	
ZIAN	e	2		20:34:45.87	57,5	318	53,25	2	99							0,25		-0,13	1	1	
PANI	e	2		20:34:45.89	58,7	288			99							0,07			0,8	0,7	

10/02/2013	12:15:37,82	,	,											10	CLAUT (PN)				M 2.0(O)			
st_name	p_rem	m	w_p	time_s	dist	azm	s_sec	w_s	ain	mx_amp	per	p_calc	p_std	cf	f_p_time	p_res	s_std	s_res	xmag	fmag		
ZIAN		3		12:15:37.82			46,97	3							93							
PANI		3		12:15:42.28			56,45	3							91							
OZOL		3		12:15:44.68			61,66	3							90							
DOSS		3		12:15:45.28			61,34	3							92							
GAGG		3		12:15:46.70			63,77	3							92							
VARA		3		12:15:48.58			67,2	3							88							
CARE		3		12:15:49.27			67,41	3							89							
RNI		3		12:15:51.37			71,02	3							89							

10/02/2013	14:28:45,91	,	,											10	CLAUT (PN)				M 1.9(O)	
st_name	p_rem	m	w_p	time_s	dist	azm	s_sec	w_s	ain	mx_amp	per	p_calc	p_std	cf	f_p_time	p_res	s_std	s_res	xmag	fmag
ZIAN		3		14:28:45.91			55,22	3							82					
PANI		3		14:28:50.15			65,02	3							83					
OZOL		3		14:28:52.79			69,63	3							81					
DOSS		3		14:28:53.37			69,56	3							81					
GAGG		3		14:28:54.65			72,05	3							81					
VARA		3		14:28:56.55			75,03	3							80					
CARE		3		14:28:57.44			75,51	3							80					
RNI		3		14:28:59.35			78,9	3							80					

10/02/2013	19:27:26,34	46,3136	12,5488	9,65	1,1	1,2	0	0	1,1	90	0	1,1	C	0,16	0	CLAUT (PN)				M 1.2(O)	
st_name	p_rem	m	w_p	time_s	dist	azm	s_sec	w_s	ain	mx_amp	per	p_calc	p_std	cf	f_p_time	p_res	s_std	s_res	xmag	fmag	
ZIAN	e	2		19:27:39.34	76,1	267				97						-0,11			1	1,2	

QUATERLY BULLETTIN *January-March 2013*

DATE	TIME	Geogr. Coord.		DEPTH	Magnitude		LOCATION ERRORS						RMS	TYPE	EPICENTRAL AREA	NOTES
DD-MM-YY	HH/MM/SS	LAT N	LON E	h (Km)	MA	MD	az1	dp1	se1	az2	dp2	se2	q			

11/02/2013	01:40:10,66	46,6910	10,4548	13,59	1	1,2	0	0	1,5	90	0	1,5	C	0,12	0	MALLES VENOSTA (BZ)					
st_name	p_rem	m	w_p	time_s	dist	azm	s_sec	w_s	ain	mx_amp	per	p_calc	p_std	cf	f_p_time	p_res	s_std	s_res	xmag	fmag	
CARE	e		2	01:40:17.36	35	148	21,91	2	111							0,28		-0,17	1	1	

11/02/2013	18:07:50,22	46,7143	12,5275	10,21	1,3		0	0	1,5	90	0	1,5	B	0,16	0	LEITEN [A]				
st_name	p_rem	m	w_p	time_s	dist	azm	s_sec	w_s	ain	mx_amp	per	p_calc	p_std	cf	f_p_time	p_res	s_std	s_res	xmag	fmag
ZIAN	e		2	18:08:05.52	88,6	237				97						0,06			0	1,4

11/02/2013	23:12:41,08	45,8031	10,5453	4,34	1,1	1,9	0	0	1,2	90	0	1,2	C	0,04	0	BONDONE (TN)					
st_name	p_rem	m	w_p	time_s	dist	azm	s_sec	w_s	ain	mx_amp	per	p_calc	p_std	cf	f_p_time	p_res	s_std	s_res	xmag	fmag	
RNI	e		2	23:12:44.65	20,6	17	47,47	2	102							-0,03		-0,03	0,8	0,9	

11/02/2013	23:32:46,87	46,5911	10,3471	7,19	0,9	1,3	0	0	1,6	90	0	1,6	C	0,17	0	VAL D' AVIGNA (SO)				
st_name	p_rem	m	w_p	time_s	dist	azm	s_sec	w_s	ain	mx_amp	per	p_calc	p_std	cf	f_p_time	p_res	s_std	s_res	xmag	fmag
CARE	e		2	23:32:52.93	32,7	125	56,56	3	102							0,34		-0,49	1,1	0

12/02/2013	00:22:33,64	45,8495	10,9303	14,81	1,6	1,8	0	0	0,5	90	0	0,5	B	0,23	0	BRENTONICO (TN)			M 1.6(O)		
st_name	p_rem	m	w_p	time_s	dist	azm	s_sec	w_s	ain	mx_amp	per	p_calc	p_std	cf	f_p_time	p_res	s_std	s_res	xmag	fmag	
VARA	i	c	1	00:22:36.57	3,7	225	38,56	2	166						33	0,32		0,27	1,1	1	
DOSS	i	c	0	00:22:38.08	20,4	80	41,1	2	126						30	0,13		-0,2	1,4	1,3	
GAGG	i	d	1	00:22:38.93	26,1	5	42,73	1	120							0,16		-0,04	1,4	1,5	
RNI	e	c	1	00:22:39.14	28	301	43,07	3	118						32	0,09		-0,2	1,6	1,7	
PANI	e		1	00:22:40.76	38,5	54	45,61	2	111						27	0,06		-0,59	1,5	1,6	
OZOL	e		2	00:22:44.69	62,3	9			103							0,11			1,4	1,3	
CARE	e	d	1	00:22:45.46	66,4	344			103							0,19			1,5	1,7	
ZIAN	e	c	1	00:22:45.56	68,2	46			102							-0,01			1,8	1,7	

12/02/2013	13:19:41,49	46,3063	12,5596	9,24	2,6	2,4	0	0	0,5	90	0	0,5	B	0,13	0	CLAUT (PN)			M 2.5(O)		
st_name	p_rem	m	w_p	time_s	dist	azm	s_sec	w_s	ain	mx_amp	per	p_calc	p_std	cf	f_p_time	p_res	s_std	s_res	xmag	fmag	
ZIAN	e	d	2	13:19:54.36	76,9	268			97							-0,36			2,4	2,5	
DOSS	e		2	13:20:01.19	116,1	246			95							-0,21			2,6	2,6	
OZOL	e		2	13:20:01.32	116,6	275			95							-0,16			2,6	2,5	
GAGG	e		2	13:20:02.99	126	259			59							-0,07			2,6	2,4	
VARA	e		3	13:20:05.03	139,3	247			59							0,02			2,7	2,6	
CARE	e		3	13:20:05.66	143,9	275			59							-0,02			2,5	2,3	

12/02/2013	13:55:12,04	,	,											10	CLAUT (PN)			DOUBLE EV. M 2.1(O)		
st_name	p_rem	m	w_p	time_s	dist	azm	s_sec	w_s	ain	mx_amp	per	p_calc	p_std	cf	f_p_time	p_res	s_std	s_res	xmag	fmag
ZIAN			3	13:55:12.04																
OZOL			3	13:55:19.51																
DOSS			3	13:55:20.33																
GAGG			3	13:55:20.63																
CARE			3	13:55:23.29																
VARA			3	13:55:23.48																
RNI			3	13:55:26.37																

QUATERLY BULLETTIN *January-March 2013*

DATE	TIME	Geogr. Coord.		DEPTH	Magnitude		LOCATION ERRORS						RMS	TYPE	EPICENTRAL AREA	NOTES
DD-MM-YY	HH/MM/SS	LAT N	LON E	h (Km)	MA	MD	az1	dp1	se1	az2	dp2	se2	q			

12/02/2013	14:15:48,24	46,3001	12,5560	9,91	1,6	2,1	0	0	0,8	90	0	0,8	C	0,1	0	CLAUT (PN)			M 1.6(O)	
st_name	p_rem	m	w_p	time_s	dist	azm	s_sec	w_s	ain	mx_amp	per	p_calc	p_std	cf	f_p_time	p_res	s_std	s_res	xmag	fmag
ZIAN	e		2	14:16:01.23	76,6	268				97						-0,2			1,5	1,4
GAGG	e		2	14:16:09.84	125,6	259				59						0,16			0	1,9
VARA	e		2	14:16:11.81	138,8	248				59						0,19			1,9	1,9

12/02/2013	14:27:59,97	,	,											10	CLAUT (PN)			M 2.3(O)		
st_name	p_rem	m	w_p	time_s	dist	azm	s_sec	w_s	ain	mx_amp	per	p_calc	p_std	cf	f_p_time	p_res	s_std	s_res	xmag	fmag
ZIAN			3	14:27:59.97			69,2	3							98					
PANI			3	14:28:03.95			16,56	3							100					
OZOL			3	14:28:06.63			22,03	3							102					
DOSS			3	14:28:06.69			22,77	3							102					
GAGG			3	14:28:08.28			25,07	3							102					
VARA			3	14:28:10.52			29,63	2							99					
CARE			3	14:28:11.13			28,83	3							102					
RNI			3	14:28:13.45			33,09	3							99					

12/02/2013	15:24:58,24	46,3046	12,5673	8,76	2	1,9	0	0	1,5	90	0	1,5	C	0,22	0	CLAUT (PN)			M 2.1(O)	
st_name	p_rem	m	w_p	time_s	dist	azm	s_sec	w_s	ain	mx_amp	per	p_calc	p_std	cf	f_p_time	p_res	s_std	s_res	xmag	fmag
ZIAN	e		2	15:25:11.31	77,5	268				96						-0,25			1,7	1,7
PANI	e		2	15:25:15.17	99,3	253				95						-0,1			1,9	1,8
DOSS	e	d	2	15:25:17.86	116,6	246				94						-0,37			2,2	2,5
OZOL	e	d	2	15:25:17.96	117,2	275				94						-0,37			1,9	1,9
VARA	e		2	15:25:21.69	139,8	248				59						-0,18			2,3	2,2

12/02/2013	17:11:02,52	46,3111	12,5518	9,86	1,4	1,2	0	0	0,9	90	0	0,9	C	0,14	0	CLAUT (PN)				M 1.2(O)	
st_name	p_rem	m	w_p	time_s	dist	azm	s_sec	w_s	ain	mx_amp	per	p_calc	p_std	cf	f_p_time	p_res	s_std	s_res	xmag	fmag	
ZIAN	e		2	17:11:15.53	76,3	267				97						-0,13			1,2	1,3	

12/02/2013	18:12:25,23	46,2845	12,5703	9,26	3,5		0	0	0,5	90	0	0,5	C	0,18	0	CLAUT (PN)			M 2.8(O)	
st_name	p_rem	m	w_p	time_s	dist	azm	s_sec	w_s	ain	mx_amp	per	p_calc	p_std	cf	f_p_time	p_res	s_std	s_res	xmag	fmag
PANI	e	c	1	18:12:42.32	98,9	255				95						0,11			3,5	3,6
OZOL	e	c	1	18:12:45.05	117,7	276				94						-0,36			3,7	3,6
DOSS	e	d	1	18:12:45.07	115,9	247				95						-0,05			3,6	3,6
GAGG	e	c	2	18:12:46.63	126,4	260				59						-0,22			3,6	3,4
CARE	e		3	18:12:49.57	145	276				59						-0,02			3,6	3,6

12/02/2013	18:12:43,81	46,2841	12,5756	8,88	4,1	3,8	0	0	1	90	0	1	C	0,17	0	CLAUT (PN)			M 3.8(O)	
st_name	p_rem	m	w_p	time_s	dist	azm	s_sec	w_s	ain	mx_amp	per	p_calc	p_std	cf	f_p_time	p_res	s_std	s_res	xmag	fmag
PANI	e		3	18:13:00.96	99,3	255				95						0,12			4,1	3,7
OZOL	e		2	18:13:03.85	118,1	276				94						-0,19			4,2	4,1

13/02/2013	03:47:38,86	,	,											0	CARE					
st_name	p_rem	m	w_p	time_s	dist	azm	s_sec	w_s	ain	mx_amp	per	p_calc	p_std	cf	f_p_time	p_res	s_std	s_res	xmag	fmag
CARE			3	03:47:38.86			39,15	3							36					

QUATERLY BULLETTIN *January-March 2013*

DATE	TIME	Geogr. Coord.		DEPTH	Magnitude		LOCATION ERRORS						RMS	TYPE	EPICENTRAL AREA	NOTES
DD-MM-YY	HH/MM/SS	LAT N	LON E	h (Km)	MA	MD	az1	dp1	se1	az2	dp2	se2	q			

13/02/2013	10:57:56,93	46,1351	11,1843	0,72	1,1	1,9	0	0	0,5	90	0	0,5	C	0,1	2	ALBIANO (TN)			EXPL?	
st_name	p_rem	m	w_p	time_s	dist	azm	s_sec	w_s	ain	mx_amp	per	p_calc	p_std	cf	f_p_time	p_res	s_std	s_res	xmag	fmag
PANI	i	c	1	10:57:59.40	14,9	129				93					31	-0,09			1	1,2
GAGG	i	c	1	10:58:00.10	18,4	252				92					32	0,03			1,1	0,9
DOSS	e		2	10:58:01.70	28,4	179				91						-0,08			1,1	1,1
OZOL	e		2	10:58:02.38	31,5	341				91						0,07			0,8	0,6
ZIAN	e	c	2	10:58:02.48	33,2	62				91						-0,12			1	0,9
CARE	e		2	10:58:05.40	49,4	311				91						0,02			0	1,3

13/02/2013	11:08:33,85	,	,											0	PANI							
st_name	p_rem	m	w_p	time_s	dist	azm	s_sec	w_s	ain	mx_amp	per	p_calc	p_std	cf	f_p_time	p_res	s_std	s_res	xmag	fmag		
PANI	i	c	2	11:08:33.85			36,04	3							37							

13/02/2013	23:57:22,54	,	,											0	RNI,VARA					
st_name	p_rem	m	w_p	time_s	dist	azm	s_sec	w_s	ain	mx_amp	per	p_calc	p_std	cf	f_p_time	p_res	s_std	s_res	xmag	fmag
RNI	i	d	2	23:57:22.54			23,09	3							47					
VARA			3	23:57:24.09											46					

14/02/2013	07:49:57,58	45,6608	10,6025	4,45	1,2	1,6	0	0	1,2	90	0	1,2	C	0,14	0	TOSCOLANO MAD. (BS)					
st_name	p_rem	m	w_p	time_s	dist	azm	s_sec	w_s	ain	mx_amp	per	p_calc	p_std	cf	f_p_time	p_res	s_std	s_res	xmag	fmag	
VARA	e		2	07:50:02.36	29,3	51	6,63	2	99							-0,28		0,03	1,1	0,9	
RNI	e		2	07:50:03.79	35,6	3				97						0,08			1,2	1,2	

15/02/2013	11:04:07,71	45,9533	11,8734	7,56	0,9	1,4	0	0	1,1	90	0	1,1	C	0,18	0	SEREN D. GRAPPA (BL)				
st_name	p_rem	m	w_p	time_s	dist	azm	s_sec	w_s	ain	mx_amp	per	p_calc	p_std	cf	f_p_time	p_res	s_std	s_res	xmag	fmag
ZIAN	e		2	11:04:15.56	43,2	326	21,03	2	100							0,36		-0,02	1,2	1,2

16/02/2013	12:03:34,13	,	,											10	MONTEFELTRO				M 2.7(l)	
st_name	p_rem	m	w_p	time_s	dist	azm	s_sec	w_s	ain	mx_amp	per	p_calc	p_std	cf	f_p_time	p_res	s_std	s_res	xmag	fmag
DOSS			3	12:03:34.13			58,66	3							136					
VARA			3	12:03:34.45			58,94	2							134					
PANI			3	12:03:36.08											135					
GAGG			3	12:03:37.73			65,48	3							137					
ZIAN			3	12:03:37.84			64,4	3							134					
RNI			3	12:03:38.23			65,1	3							133					
OZOL			3	12:03:41.76											134					
CARE			3	12:03:44.04			75,58	3							135					

17/02/2013	09:38:07,10	,	,											0	RNI					
st_name	p_rem	m	w_p	time_s	dist	azm	s_sec	w_s	ain	mx_amp	per	p_calc	p_std	cf	f_p_time	p_res	s_std	s_res	xmag	fmag
RNI			3	09:38:07.10			7,49	3							30					

17/02/2013	14:27:01,59	,	,											0	RNI					
st_name	p_rem	m	w_p	time_s	dist	azm	s_sec	w_s	ain	mx_amp	per	p_calc	p_std	cf	f_p_time	p_res	s_std	s_res	xmag	fmag
RNI	e	d	2	14:27:01.59			2,6	3							40					

QUATERLY BULLETTIN *January-March 2013*

DATE	TIME	Geogr. Coord.		DEPTH	Magnitude		LOCATION ERRORS							RMS	TYPE	EPICENTRAL AREA	NOTES
DD-MM-YY	HH/MM/SS	LAT N	LON E	h (Km)	MA	MD	az1	dp1	se1	az2	dp2	se2	q				

17/02/2013	16:25:36,52	,	,											0	CARE					
st_name	p_rem	m	w_p	time_s	dist	azm	s_sec	w_s	ain	mx_amp	per	p_calc	p_std	cf	f_p_time	p_res	s_std	s_res	xmag	fmag
CARE		2		16:25:36.52			37,43	2							33					

18/02/2013	02:58:19,98	46,1621	12,4885		1,71	1,5	1,6	0	0	1,1	90	0	1,1	D	0,21	0	PIEVE D' ALPAGO (BL)		M 1.6(O)	
st_name	p_rem	m	w_p	time_s	dist	azm	s_sec	w_s	ain	mx_amp	per	p_calc	p_std	cf	f_p_time	p_res	s_std	s_res	xmag	fmag
DOSS	e	2		02:58:38.29	105,4	253			91							0,28			1,6	0

18/02/2013	18:45:27,59	,	,												10	PIANURA PADANA EMIL.	M 2.3(I)			
st_name	p_rem	m	w_p	time_s	dist	azm	s_sec	w_s	ain	mx_amp	per	p_calc	p_std	cf	f_p_time	p_res	s_std	s_res	xmag	fmag
VARA		3		18:45:27.59			41,49	3							96					
DOSS		3		18:45:28.44			42,29	3							98					
GAGG		3		18:45:32.71			48,75	2							95					

19/02/2013	01:27:36,07	45,5518	10,9851		11,79	0,8	1,5	0	0	1,6	90	0	1,6	C	0,15	0	GREZZANA (VR)			
st_name	p_rem	m	w_p	time_s	dist	azm	s_sec	w_s	ain	mx_amp	per	p_calc	p_std	cf	f_p_time	p_res	s_std	s_res	xmag	fmag
VARA	e	2		01:27:41.98	31,2	347	46,25	2	111							0,2		0,02	0,8	0,6
DOSS	e	c	1	01:27:43.25	39,7	24	48,41	2	107						21	0,09		-0,28	0	0

19/02/2013	21:03:09,11	45,8986	11,0160		11,57	0,4	0,1	0	0	0,2	90	0	0,2	B	0,02	0	ISERA (TN)			
st_name	p_rem	m	w_p	time_s	dist	azm	s_sec	w_s	ain	mx_amp	per	p_calc	p_std	cf	f_p_time	p_res	s_std	s_res	xmag	fmag
VARA	e	2		21:03:12.00	12,3	229	14,26	2	133							0		0,01	0	0,1
DOSS	i	c	2	21:03:12.13	13,6	99	14,56	2	130							-0,03		0,02	0	0
GAGG	e	1		21:03:13.24	21	348	16,38	2	119						5	0,03		-0,03	0,7	0,4

20/02/2013	08:20:00,52	,	,												0	OZOL				
st_name	p_rem	m	w_p	time_s	dist	azm	s_sec	w_s	ain	mx_amp	per	p_calc	p_std	cf	f_p_time	p_res	s_std	s_res	xmag	fmag
OZOL	i	c	1	08:20:00.52			1,6	2							35					

20/02/2013	21:16:09,33	,	,												10	APPENNINO FORLIVESE	M 2.3(I)			
st_name	p_rem	m	w_p	time_s	dist	azm	s_sec	w_s	ain	mx_amp	per	p_calc	p_std	cf	f_p_time	p_res	s_std	s_res	xmag	fmag
DOSS		3		21:16:09.33			36,35	3							104					
VARA		3		21:16:09.78			38,23	3							114					
GAGG		3		21:16:12.88			43,9	3							105					
RNI		3		21:16:13.69			44,28	3							111					
OZOL		3		21:16:17.29			49,75	3							108					
CARE		3		21:16:19.20											106					

QUATERLY BULLETTIN *January-March 2013*

DATE	TIME	Geogr. Coord.		DEPTH	Magnitude		LOCATION ERRORS						RMS	TYPE	EPICENTRAL AREA	NOTES
DD-MM-YY	HH/MM/SS	LAT N	LON E	h (Km)	MA	MD	az1	dp1	se1	az2	dp2	se2	q			

20/02/2013	21:40:11,43	,	,											10	GARFAGNANA				M 2.9(I)			
st_name	p_rem	m	w_p	time_s	dist	azm	s_sec	w_s	ain	mx_amp	per	p_calc	p_std	cf	f_p_time	p_res	s_std	s_res	xmag	fmag		
VARA		3		21:40:11.43			35,19	3							174							
DOSS		3		21:40:11.53			37,61	3							174							
RNI		3		21:40:13.56											174							
PANI		3		21:40:14.40			44,7	3							173							
GAGG		3		21:40:15.16			43,26	3							174							
ZIAN		3		21:40:18.41			51,6	3							171							
OZOL		3		21:40:19.21			53,26	3							170							
CARE		3		21:40:20.37			52,15	3							169							

21/02/2013	04:18:54,35	,	,											10						
st_name	p_rem	m	w_p	time_s	dist	azm	s_sec	w_s	ain	mx_amp	per	p_calc	p_std	cf	f_p_time	p_res	s_std	s_res	xmag	fmag
CARE		3		04:18:54.35			62,56	3							78					
OZOL		3		04:18:55.69			66,13	3							82					
ZIAN		3		04:19:01.10											81					
GAGG		3		04:19:01.99			15,13	3							79					
RNI		3		04:19:03.17			17,37	3							80					

21/02/2013	08:13:42,80	,	,											0	CARE					
st_name	p_rem	m	w_p	time_s	dist	azm	s_sec	w_s	ain	mx_amp	per	p_calc	p_std	cf	f_p_time	p_res	s_std	s_res	xmag	fmag
CARE	e	d	2	08:13:42.80			43,95	2							45					

21/02/2013	17:59:33,10	,	,											10						
st_name	p_rem	m	w_p	time_s	dist	azm	s_sec	w_s	ain	mx_amp	per	p_calc	p_std	cf	f_p_time	p_res	s_std	s_res	xmag	fmag
VARA		3		17:59:33.10			47,43	3							86					
DOSS		3		17:59:34.05			47,52	3							82					
PANI		3		17:59:36.82			53,58	3							84					
GAGG		3		17:59:37.58			54,74	2							82					
ZIAN		3		17:59:40.94			59,79	3							84					

21/02/2013	18:32:57,59	,	,											10	PIANURA PADANA EMIL.	M 2.3(I)				
st_name	p_rem	m	w_p	time_s	dist	azm	s_sec	w_s	ain	mx_amp	per	p_calc	p_std	cf	f_p_time	p_res	s_std	s_res	xmag	fmag
VARA	e	d	2	18:32:57.59			72,17	3							94					
DOSS	e	d	2	18:32:57.91			72,14	3							94					
PANI	i	d	2	18:33:01.28			17,97	3							93					
RNI			3	18:33:01.34			19,1	3							93					
GAGG			3	18:33:01.83			19,24	3							92					
ZIAN			3	18:33:05.25			24,4	3							93					
OZOL			3	18:33:07.43			29,24	3							90					
CARE			3	18:33:08.15			29,8	3							91					

QUATERLY BULLETTIN *January-March 2013*

DATE	TIME	Geogr. Coord.		DEPTH	Magnitude		LOCATION ERRORS							RMS	TYPE	EPICENTRAL AREA	NOTES
DD-MM-YY	HH/MM/SS	LAT N	LON E	h (Km)	MA	MD	az1	dp1	se1	az2	dp2	se2	q				

22/02/2013	19:35:30,55	,	,											10	PIANURA PADANA EMIL.	M 2.4(I)				
st_name	p_rem	m	w_p	time_s	dist	azm	s_sec	w_s	ain	mx_amp	per	p_calc	p_std	cf	f_p_time	p_res	s_std	s_res	xmag	fmag
VARA		3		19:35:30.55			46,18	3							124					
DOSS		3		19:35:30.68			45,57	3							123					
PANI		3		19:35:33.94			51,43	3							122					
RNI		3		19:35:34.34			52,62	3							122					
GAGG		3		19:35:34.92			53,01	2							123					
ZIAN		3		19:35:37.21			56,73	2							122					
OZOL		3		19:35:40.07			61,71	3							121					

22/02/2013	20:59:07,28	,	,												10	PIANURA PADANA EMIL.	M 2.3(I)			
st_name	p_rem	m	w_p	time_s	dist	azm	s_sec	w_s	ain	mx_amp	per	p_calc	p_std	cf	f_p_time	p_res	s_std	s_res	xmag	fmag
VARA	e	c	2	20:59:07.28			21,81	2							98					
DOSS			3	20:59:08.74			23,74	3							99					
RNI			3	20:59:09.66			25,14	2							98					
GAGG			3	20:59:11.33			29,01	3							100					
PANI			3	20:59:11.51			29,94	3							99					
ZIAN			3	20:59:16.11			37,57	3							99					
OZOL			3	20:59:17.00			36,8	3							98					

23/02/2013	01:55:40.62	,	,											0	RNI					
st_name	p_rem	m	w_p	time_s	dist	azm	s_sec	w_s	ain	mx_amp	per	p_calc	p_std	cf	f_p_time	p_res	s_std	s_res	xmag	fmag
RNI	i	d	2	01:55:40.62			42.05	3							43					

23/02/2013	11:14:04,72	45,5368	10,5206	2	1,5	2,2	0	0	0,9	90	0	0,9	D	0,12	0	MANERBA GARDA (BS)				
st_name	p_rem	m	w_p	time_s	dist	azm	s_sec	w_s	ain	mx_amp	per	p_calc	p_std	cf	f_p_time	p_res	s_std	s_res	xmag	fmag
VARA	e		2	11:14:12.18	43,5	42	17,97	3	93							0,02		0	1,5	1,2
RNI	e		2	11:14:13.42	50	9	20,02	3	92							0,14		0,07	1,2	1,3
GAGG	e		2	11:14:16.87	69,7	29			92							0,23			0	1,5
ZIAN	e		2	11:14:24.43	115,3	45			91							-0,01			1,5	1,4

24/02/2013	07:56:44,94	45,8809	11,9328	9,74	1,7	1,6	0	0	0,7	90	0	0,7	C	0,15	0	CAVASO TOMBA (TV)				M 1.4(O)	
st_name	p_rem	m	w_p	time_s	dist	azm	s_sec	w_s	ain	mx_amp	per	p_calc	p_std	cf	f_p_time	p_res	s_std	s_res	xmag	fmag	
ZIAN	e		2	07:56:54.13	52,4	327	60,95	2	101							0,07		-0,22	1,8	1,7	
DOSS	e		2	07:56:55.03	57,8	270			100							0,07			1,7	1,5	
GAGG	e		2	07:56:58.32	78,8	287			97							-0,19			2	1,8	
VARA	e		2	07:56:58.82	80,7	266			97							-0,02			1,7	1,7	

24/02/2013	19:33:38,63	,	,											10						
st_name	p_rem	m	w_p	time_s	dist	azm	s_sec	w_s	ain	mx_amp	per	p_calc	p_std	cf	f_p_time	p_res	s_std	s_res	xmag	fmag
OZOL			3	19:33:38.63			51,79	2							103					
ZIAN			2	19:33:39.07			52,47	3							110					
PANI			3	19:33:43.51			60,27	2							104					
GAGG			3	19:33:44.36			61,7	2							102					
DOSS	e	d	2	19:33:46.65			65,61	2							102					
RNI			3	19:33:47.65			67,66	3							105					
VARA			3	19:33:48.66			69,83	3							105					

QUATERLY BULLETTIN *January-March 2013*

DATE	TIME	Geogr. Coord.		DEPTH	Magnitude		LOCATION ERRORS							RMS	TYPE	EPICENTRAL AREA	NOTES
DD-MM-YY	HH/MM/SS	LAT N	LON E	h (Km)	MA	MD	az1	dp1	se1	az2	dp2	se2	q				

25/02/2013	01:02:19,39	,	,												10	ALPI GRAIE	M 3.3(I)			
st_name	p_rem	m	w_p	time_s	dist	azm	s_sec	w_s	ain	mx_amp	per	p_calc	p_std	cf	f_p_time	p_res	s_std	s_res	xmag	fmag
RNI		3		01:02:19.39			55,02	3							176					
VARA		3		01:02:20.94			62,69	3							178					
GAGG		3		01:02:23.28			63,41	3							177					
DOSS		3		01:02:23.83			68,77	3							175					
PANI		3		01:02:25.94			71,67	3							176					
OZOL		3		01:02:27.08			72,74	3							176					
ZIAN		3		01:02:29.20											178					

25/02/2013	11:34:11,15	,	,												0	OZOL				
st_name	p_rem	m	w_p	time_s	dist	azm	s_sec	w_s	ain	mx_amp	per	p_calc	p_std	cf	f_p_time	p_res	s_std	s_res	xmag	fmag
OZOL		3		11:34:11.15			12,25	2							31					

25/02/2013	13:32:43,37	,	,											0	RNI					
st_name	p_rem	m	w_p	time_s	dist	azm	s_sec	w_s	ain	mx_amp	per	p_calc	p_std	cf	f_p_time	p_res	s_std	s_res	xmag	fmag
RNI		3		13:32:43.37			45,73	3							36					

25/02/2013	15:07:32,20	,	,											0	RNI					
st_name	p_rem	m	w_p	time_s	dist	azm	s_sec	w_s	ain	mx_amp	per	p_calc	p_std	cf	f_p_time	p_res	s_std	s_res	xmag	fmag
RNI		3		15:07:32.20			33,61	3							32					

25/02/2013	22:19:25,39	45,6548	10,0491	12,04	3,6	3,3	0	0	1,6	90	0	1,6	C	0,21	0	ISEO (BS)				M 3.1(I)			
st_name	p_rem	m	w_p	time_s	dist	azm	s_sec	w_s	ain	mx_amp	per	p_calc	p_std	cf	f_p_time	p_res	s_std	s_res	xmag	fmag			
RNI	e		2	22:19:35.19	57,4	51			102						156	-0,23			3,3	3,5			
VARA	e		2	22:19:37.33	68,6	74			100							0,03			3,4	3,2			
GAGG	e		2	22:19:39.95	85,2	56			98							-0,14			3,2	3,1			
DOSS	e	c	1	22:19:41.23	92,1	74			97						156	-0,04			3,8	3,7			
PANI	e	c	1	22:19:44.14	109,1	66			96						129	-0,01			3,8	3,5			
OZOL	e		2	22:19:44.62	113,8	43			59							-0,28			3,6	3,5			
ZIAN	e		2	22:19:48.49	136,2	60			59							0,28			3,8	3,7			

26/02/2013	00:07:12,62	46,3526	10,8370	9,57	0,8	1,2	0	0	1,1	90	0	1,1	C	0,21	0	RABBI (TN)					
st_name	p_rem	m	w_p	time_s	dist	azm	s_sec	w_s	ain	mx_amp	per	p_calc	p_std	cf	f_p_time	p_res	s_std	s_res	xmag	fmag	
GAGG	e		1	00:07:18.34	31,4	163	22,55	2	107						21	0,12		-0,04	0	1	
RNI	e	d	1	00:07:20.37	44,5	202	26,03	3	102							-0,03		-0,44	0,6	0,6	

26/02/2013	01:46:41,52	45,6473	10,0595	9,4400	1,8	1,9	0	0	2,1	90	0	2,1	C	0,18	0	ISEO (BS)			M 1.7(O)		
st_name	p_rem	m	w_p	time_s	dist	azm	s_sec	w_s	ain	mx_amp	per	p_calc	p_std	cf	f_p_time	p_res	s_std	s_res	xmag	fmag	
RNI	e		2	01:46:51.31	57,4	50			99						32	-0,15			1,6	1,7	
VARA	e		2	01:46:53.54	68,1	73			98							0,27			1,6	1,4	
GAGG	e		2	01:46:56.49	85	55			96							0,35			0	1,5	
DOSS	e	d	2	01:46:57.22	91,6	74	69,21	3	96						36	-0,04		-0,32	1,8	1,8	
PANI	e		2	01:47:00.21	108,7	66			95							0,03			1,9	1,7	
OZOL	e		2	01:47:00.92	113,9	42			95						30	-0,13			1,9	1,8	
ZIAN	e		2	01:47:04.74	135,9	59			59							0,22			2,1	2	

QUATERLY BULLETTIN *January-March 2013*

DATE	TIME	Geogr. Coord.		DEPTH	Magnitude		LOCATION ERRORS						RMS	TYPE	EPICENTRAL AREA	NOTES
DD-MM-YY	HH/MM/SS	LAT N	LON E	h (Km)	MA	MD	az1	dp1	se1	az2	dp2	se2	q			

26/02/2013	11:57:47,86	,	,											10	ALPI LEPONTINE	M 2.6(I)				
st_name	p_rem	m	w_p	time_s	dist	azm	s_sec	w_s	ain	mx_amp	per	p_calc	p_std	cf	f_p_time	p_res	s_std	s_res	xmag	fmag
RNI		3		11:57:47.86			68,43	3							110					
GAGG		3		11:57:51.45			74,52	3							110					
VARA		3		11:57:51.87			77,94	3							111					
OZOL		3		11:57:52.13			75,6	3							110					
PANI		3		11:57:56.42			82,97	3							108					
DOSS		3		11:57:56.66			82,26	3							108					
ZIAN		3		11:57:59.61											110					

26/02/2013	19:34:38,84	,	,											0	VARA					
st_name	p_rem	m	w_p	time_s	dist	azm	s_sec	w_s	ain	mx_amp	per	p_calc	p_std	cf	f_p_time	p_res	s_std	s_res	xmag	fmag
VARA		3		19:34:38.84			40,81	2							39					

27/02/2013	02:59:54.28	,	,											10	PIANURA PADANA LOMB.				M 2.0(I)	
st_name	p_rem	m	w_p	time_s	dist	azm	s_sec	w_s	ain	mx_amp	per	p_calc	p_std	cf	f_p_time	p_res	s_std	s_res	xmag	fmag
DOSS		3		02:59:54.28			69,22	3							93					
VARA		3		02:59:54.64			69,32	3							93					
PANI		3		02:59:57.40			74,22	3							92					
RNI		3		02:59:58.22			75,35	3							92					
GAGG		3		02:59:58.47			75,61	3							93					
ZIAN		3		03:00:01.24			19,82	3							92					
OZOL		3		03:00:04.10			24,98	3							91					

27/02/2013	07:09:08,49	,	,											0	RNI					
st_name	p_rem	m	w_p	time_s	dist	azm	s_sec	w_s	ain	mx_amp	per	p_calc	p_std	cf	f_p_time	p_res	s_std	s_res	xmag	fmag
RNI		3		07:09:08.49			9,79	2							42					

27/02/2013	23:00:48,07	,	,											10	ALPI RETICHE			M 2.1(I)		
st_name	p_rem	m	w_p	time_s	dist	azm	s_sec	w_s	ain	mx_amp	per	p_calc	p_std	cf	f_p_time	p_res	s_std	s_res	xmag	fmag
RNI		3		23:00:48.07			59,31	3							100					
CARE		3		23:00:48.57			56,36	3							100					
OZOL		3		23:00:50.44			62,72	3							99					
GAGG		3		23:00:51.27			63,77	3							99					
VARA		3		23:00:52.67			66,54	3							100					
DOSS		3		23:00:56.10			70,18	3							98					
ZIAN		3		23:00:57.53											102					

28/02/2013	04:27:53,35	,	,											0	CARE					
st_name	p_rem	m	w_p	time_s	dist	azm	s_sec	w_s	ain	mx_amp	per	p_calc	p_std	cf	f_p_time	p_res	s_std	s_res	xmag	fmag
CARE		3		04:27:53.35			54,17	2							38					

28/02/2013	15:36:43,21	,	,											0	RNI					
st_name	p_rem	m	w_p	time_s	dist	azm	s_sec	w_s	ain	mx_amp	per	p_calc	p_std	cf	f_p_time	p_res	s_std	s_res	xmag	fmag
RNI		3		15:36:43.21			45,05	3							27					

QUATERLY BULLETTIN *January-March 2013*

DATE	TIME	Geogr. Coord.		DEPTH	Magnitude		LOCATION ERRORS						RMS	TYPE	EPICENTRAL AREA	NOTES
DD-MM-YY	HH/MM/SS	LAT N	LON E	h (Km)	MA	MD	az1	dp1	se1	az2	dp2	se2	q			

28/02/2013	18:33:23,16	45,7900	10,9665	13,9	0,8	1,2	0	0	0,9	90	0	0,9	C	0,11	0	BRENTONICO (TN)					
st_name	p_rem	m	w_p	time_s	dist	azm	s_sec	w_s	ain	mx_amp	per	p_calc	p_std	cf	f_p_time	p_res	s_std	s_res	xmag	fmag	
VARA	e	c	1	18:33:25.91	6,8	306	27,93	2	154						27	0,11		0,07	0,5	0,3	
GAGG	e		2	18:33:29.31	32,6	359	33,79	2	113							0,09		-0,16	0	0	

01/03/2013	13:58:37,57	,	,												10					
st_name	p_rem	m	w_p	time_s	dist	azm	s_sec	w_s	ain	mx_amp	per	p_calc	p_std	cf	f_p_time	p_res	s_std	s_res	xmag	fmag
VARA			3	13:58:37.57			52,69	3							87					
DOSS			3	13:58:37.67			51,87	3							86					
RNI			3	13:58:41.18			59,17	3							86					
GAGG			3	13:58:41.37			59,44	3							86					
ZIAN			3	13:58:44.10			63,25	3							87					
CARE			3	13:58:47.84			69,84	3							84					

02/03/2013	20:08:41,18	46,4695	11,5953	5,66	1,2	2	0	0	0,6	90	0	0,6	C	0,14	0	VIGO DI FASSA (TN)					
st_name	p_rem	m	w_p	time_s	dist	azm	s_sec	w_s	ain	mx_amp	per	p_calc	p_std	cf	f_p_time	p_res	s_std	s_res	xmag	fmag	
ZIAN	e	d	1	20:08:45.06	21,6	187	47,99	2	105						45	0,06		0,01	0,9	1,1	
OZOL	e	c	2	20:08:48.51	42,4	260	53,91	2	98						42	0,01		-0,3	1,2	1,1	

03/03/2013	02:48:52.07													10	APPENNINO BOLOGNES	M 3.1(l)				
st_name	p_rem	m	w_p	time_s	dist	azm	s_sec	w_s	ain	mx_amp	per	p_calc	p_std	cf	f_p_time	p_res	s_std	s_res	xmag	fmag
DOSS			2	02:48:52.07			77,26	2							195					
VARA			3	02:48:52.17			78,32	3							194					
GAGG			2	02:48:55.56			84,32	3							193					
PANI			3	02:48:56.29			80,83	3							193					
RNI			3	02:48:56.93			82,54	3							191					
ZIAN			2	02:48:58.17			83,46	3							193					
OZOL			2	02:49:00.67			31,87	3							192					
CARE			3	02:49:01.61											191					

03/03/2013	05:06:32,90	46,4543	10,2750	7,41	0,3		0	0	2,2	90	0	2,2	C	0,06	0	VALLE DI DENTRO (SO)					
st_name	p_rem	m	w_p	time_s	dist	azm	s_sec	w_s	ain	mx_amp	per	p_calc	p_std	cf	f_p_time	p_res	s_std	s_res	xmag	fmag	
CARE	e		2	05:06:38.69	32,6	96	43,03	2	103							0,07		-0,05	0	0	

03/03/2013	15:49:02,56	45,6131	10,5290	24,49	0,7	1,4	0	0	1,7	90	0	1,7	C	0,14	0	SALO' (BS)				
st_name	p_rem	m	w_p	time_s	dist	azm	s_sec	w_s	ain	mx_amp	per	p_calc	p_std	cf	f_p_time	p_res	s_std	s_res	xmag	fmag
VARA	e		2	15:49:10.06	37,1	50	15,92	2	110							0,03		0,07	0	0

03/03/2013	16:54:57,85	,	,											0	RNI					
st_name	p_rem	m	w_p	time_s	dist	azm	s_sec	w_s	ain	mx_amp	per	p_calc	p_std	cf	f_p_time	p_res	s_std	s_res	xmag	fmag
RNI			3	16:54:57.85			58,5	3							31					

QUATERLY BULLETTIN *January-March 2013*

DATE	TIME	Geogr. Coord.		DEPTH	Magnitude		LOCATION ERRORS							RMS	TYPE	EPICENTRAL AREA	NOTES
DD-MM-YY	HH/MM/SS	LAT N	LON E	h (Km)	MA	MD	az1	dp1	se1	az2	dp2	se2	q				

04/03/2013	03:53:46,98	,	,											10	APPENNINO FORLIVESE	M 3.4(I)				
st_name	p_rem	m	w_p	time_s	dist	azm	s_sec	w_s	ain	mx_amp	per	p_calc	p_std	cf	f_p_time	p_res	s_std	s_res	xmag	fmag
DOSS	e	d	1	03:53:46.98			76,82	3							232					
VARA	e	d	2	03:53:47.10			76,34	3							240					
PANI			3	03:53:49.84			79,8	3							236					
GAGG			3	03:53:50.39			82,91	3							233					
RNI	e	d	2	03:53:50.89			81,76	3							236					
ZIAN			3	03:53:53.08			82,13	3							240					
OZOL			3	03:53:54.84			87,99	3							232					
CARE			3	03:53:56.57			90,56	3							226					

04/03/2013	05:00:18,66	,	,											10						
st_name	p_rem	m	w_p	time_s	dist	azm	s_sec	w_s	ain	mx_amp	per	p_calc	p_std	cf	f_p_time	p_res	s_std	s_res	xmag	fmag
RNI			3	05:00:18.66			30,93	2							100					
VARA			3	05:00:21.40			33,93	3							101					
DOSS			3	05:00:22.40			38,13	3							100					

04/03/2013	09:40:39.06	,	,											0	CARE					
st_name	p_rem	m	w_p	time_s	dist	azm	s_sec	w_s	ain	mx_amp	per	p_calc	p_std	cf	f_p_time	p_res	s_std	s_res	xmag	fmag
CARE			3	09:40:39.06			39,78	2							31					

04/03/2013	13:23:09.68	,	,											0	RNI					
st_name	p_rem	m	w_p	time_s	dist	azm	s_sec	w_s	ain	mx_amp	per	p_calc	p_std	cf	f_p_time	p_res	s_std	s_res	xmag	fmag
RNI			3	13:23:09.68			10,13	3							16					

04/03/2013	13:57:59,54	45,7868	10,9883	13	1,2	1,9	0	0	0,6	90	0	0,6	C	0,16	0	ALA (TN)				
st_name	p_rem	m	w_p	time_s	dist	azm	s_sec	w_s	ain	mx_amp	per	p_calc	p_std	cf	f_p_time	p_res	s_std	s_res	xmag	fmag
VARA	i	c	1	13:58:02.44	8,4	301	4,49	2	147							0,25		0,24	1,4	1,2
DOSS	i	c	1	13:58:03.57	18,7	56	6,23	2	125						39	0,13		-0,24	1	1
GAGG	e	d	1	13:58:05.73	33,1	356	10,33	2	111							0,11		-0,02	1,4	1
RNI	e	c	2	13:58:06.06	35,6	307	10,82	3	110							0,03		-0,27	0,9	1
PANI	e	d	1	13:58:06.81	39,8	42			108							0,11			1,1	1,1
CARE	e	c	2	13:58:12.64	74,4	342			100							0,19			0	1,2

04/03/2013	14:10:16,28	45,7780	11,0016	13,03	0,9	1,5	0	0	0,7	90	0	0,7	C	0,18	0	ALA (TN)					
st_name	p_rem	m	w_p	time_s	dist	azm	s_sec	w_s	ain	mx_amp	per	p_calc	p_std	cf	f_p_time	p_res	s_std	s_res	xmag	fmag	
VARA	e	c	2	14:10:19.33	9,8	303	21,39	2	143						27	0,27		0,16	1	0,8	
GAGG	e		2	14:10:22.69	34,1	354	27,18	2	111							0,17		-0,21	1	0,9	

04/03/2013	20:45:22,58	45,7976	10,9941	13,02	0,7	1,8	0	0	0,9	90	0	0,9	C	0,11	0	BRENTONICO (TN)					
st_name	p_rem	m	w_p	time_s	dist	azm	s_sec	w_s	ain	mx_amp	per	p_calc	p_std	cf	f_p_time	p_res	s_std	s_res	xmag	fmag	
VARA	i	c	1	20:45:25.25	8,2	293	27,32	2	148						25	0,03		0,05	0,7	0,5	
DOSS	i	c	1	20:45:26.38	17,7	59	29,06	2	126						31	0,04		-0,2	0,5	0,6	
GAGG	e		2	20:45:28.55	31,9	355	33,08	2	112							0,08		0,02	0	0,7	
PANI	e		2	20:45:29.62	38,6	43			109							0,07			0,4	0,5	
ZIAN	e		2	20:45:34.69	69,1	40			101							0,09			0,8	0	

QUATERLY BULLETTIN *January-March 2013*

DATE	TIME	Geogr. Coord.		DEPTH	Magnitude		LOCATION ERRORS						RMS	TYPE	EPICENTRAL AREA	NOTES
DD-MM-YY	HH/MM/SS	LAT N	LON E	h (Km)	MA	MD	az1	dp1	se1	az2	dp2	se2	q			

05/03/2013	01:18:04,02	,	,											10	WALENSTADT [CH]	M 2.6(S)				
st_name	p_rem	m	w_p	time_s	dist	azm	s_sec	w_s	ain	mx_amp	per	p_calc	p_std	cf	f_p_time	p_res	s_std	s_res	xmag	fmag
CARE		3		01:18:04.02			27,59	3							129					
OZOL		3		01:18:08.02			33,65	3							128					
RNI		3		01:18:09.50			36,69	3							132					
GAGG		3		01:18:12.83			38,32	3							128					
ZIAN		3		01:18:13.09			42,21	3							132					
VARA		3		01:18:15.40			42,99	3							132					
PANI		3		01:18:15.69			42,17	3							128					
DOSS		3		01:18:17.01			46,18	3							125					

05/03/2013	03:23:24,96	46,4733	10,6225	9,22	0,7	1,5	0	0	1,1	90	0	1,1	B	0,25	0	MONTE CEVEDALE (TN)					
st_name	p_rem	m	w_p	time_s	dist	azm	s_sec	w_s	ain	mx_amp	per	p_calc	p_std	cf	f_p_time	p_res	s_std	s_res	xmag	fmag	
CARE	e	d	1	03:23:27.31	7,9	133	28,67	2	139						19	0,28		0,02	0	0,4	

05/03/2013	10:53:22,76	45,4775	10,8631	3,71	1,1	0,8	0	0	1,2	90	0	1,2	D	0,06	0	PESCANTINA (VR)					
st_name	p_rem	m	w_p	time_s	dist	azm	s_sec	w_s	ain	mx_amp	per	p_calc	p_std	cf	f_p_time	p_res	s_std	s_res	xmag	fmag	
VARA	e		2	10:53:29.42	38,8	4	34,67	2	95							-0,01		0,04	1,4	1	

05/03/2013	12:00:49,69	46,3653	10,8293	4,49	0,9	1,5	0	0	0,6	90	0	0,6	C	0,1	0	RABBI (TN)				
st_name	p_rem	m	w_p	time_s	dist	azm	s_sec	w_s	ain	mx_amp	per	p_calc	p_std	cf	f_p_time	p_res	s_std	s_res	xmag	fmag
CARE	e	c	0	12:00:52.00	12,1	303	53,57	2	110						22	0,11		-0,04	0,9	0,5
OZOL	i	d	1	12:00:52.73	17,6	76	55,22	2	104						14	-0,06		0	0,8	0,7

06/03/2013	02:13:14,72	,	,											10	APPENNINO FORLIVESE				M 3.1(I)			
st_name	p_rem	m	w_p	time_s	dist	azm	s_sec	w_s	ain	mx_amp	per	p_calc	p_std	cf	f_p_time	p_res	s_std	s_res	xmag	fmag		
DOSS			3	02:13:14.72			42,74	3							156							
VARA			3	02:13:15.14			44,98	3							153							
PANI			3	02:13:17.88			49,34	3							154							
GAGG			3	02:13:18.16			51,72	3							157							
RNI			3	02:13:18.43			50,88	3							153							
ZIAN			3	02:13:20.81			54,63	3							154							
OZOL	e	d	2	02:13:23.31			60,61	3							153							
CARE			3	02:13:24.04			62,66	3							154							

06/03/2013	21:10:44,52	45,8181	11,0406	16,85	0,9	1,1	0	0	1,1	90	0	1,1	C	0,09	0	ROVERETO (TN)					
st_name	p_rem	m	w_p	time_s	dist	azm	s_sec	w_s	ain	mx_amp	per	p_calc	p_std	cf	f_p_time	p_res	s_std	s_res	xmag	fmag	
VARA	e		2	21:10:47.88	11,2	274	50,75	2	146							-0,11		0,06	0	0,5	
DOSS	e		2	21:10:48.24	13,4	59	51,06	2	141						13	0,04		-0,01	0	0	
GAGG	e		2	21:10:50.59	30,2	348	54,94	2	119							0,16		-0,1	0	1,2	

06/03/2013	22:45:30,72	46,7358	10,3644	9,36	1,1		0	0	1,5	90	0	1,5	C	0,1	0	MONPICCO (BZ)					
st_name	p_rem	m	w_p	time_s	dist	azm	s_sec	w_s	ain	mx_amp	per	p_calc	p_std	cf	f_p_time	p_res	s_std	s_res	xmag	fmag	
CARE	i	d	1	22:45:38.28	43	144	44,11	2	102							0,04		0	1,2	1,2	

QUATERLY BULLETTIN *January-March 2013*

DATE	TIME	Geogr. Coord.		DEPTH	Magnitude		LOCATION ERRORS							RMS	TYPE	EPICENTRAL AREA	NOTES
DD-MM-YY	HH/MM/SS	LAT N	LON E	h (Km)	MA	MD	az1	dp1	se1	az2	dp2	se2	q				

07/03/2013	03:57:16,33	,	,											0	RNI					
st_name	p_rem	m	w_p	time_s	dist	azm	s_sec	w_s	ain	mx_amp	per	p_calc	p_std	cf	f_p_time	p_res	s_std	s_res	xmag	fmag
RNI		3		03:57:16.33			18,39	2							36					

07/03/2013	11:13:29,13	46,1350	11,1891	1,04	1,1		0	0	0,5	90	0	0,5	C	0,1	2	ALBIANO (TN)			EXPL?		
st_name	p_rem	m	w_p	time_s	dist	azm	s_sec	w_s	ain	mx_amp	per	p_calc	p_std	cf	f_p_time	p_res	s_std	s_res	xmag	fmag	
PANI	i	c	1	11:13:31.58	14,6	130			94							-0,06			0,9	1	
GAGG	e		1	11:13:32.30	18,7	252			93							-0,04			0,9	0	
DOSS	e		2	11:13:33.87	28,3	180			92							-0,11			1	1	
OZOL	e		2	11:13:34.68	31,7	340			92							0,13			0,9	0,6	
ZIAN	e	c	1	11:13:34.68	32,9	61			92							-0,07			1	0,6	
VARA	i	c	1	11:13:36.36	41,2	213			91							0,19			1,1	0	
CARE	e	c	1	11:13:37.56	49,7	310			91							-0,07			1,2	1,2	

07/03/2013	17:49:49,28	,	,											10	ST MORITZ [CH]			M 1.7(S)		
st_name	p_rem	m	w_p	time_s	dist	azm	s_sec	w_s	ain	mx_amp	per	p_calc	p_std	cf	f_p_time	p_res	s_std	s_res	xmag	fmag
CARE	e	d	2	17:49:49.28			57,49	2							68					
RNI			3	17:49:52.51			63,07	3							68					
OZOL			3	17:49:53.93			66,62	3							67					
VARA			3	17:49:56.89			71,38	3							67					

08/03/2013	01:42:48,81	,	,											0	VARA					
st_name	p_rem	m	w_p	time_s	dist	azm	s_sec	w_s	ain	mx_amp	per	p_calc	p_std	cf	f_p_time	p_res	s_std	s_res	xmag	fmag
VARA			3	01:42:48.81			50,15	3							45					

08/03/2013	14:39:27,95	,	,											0	CARE					
st_name	p_rem	m	w_p	time_s	dist	azm	s_sec	w_s	ain	mx_amp	per	p_calc	p_std	cf	f_p_time	p_res	s_std	s_res	xmag	fmag
CARE	i	c	2	14:39:27.95			29,44	1							39					

08/03/2013	15:29:10,82	45,6148	11,5020	10,09	2,4	2,6	0	0	0,5	90	0	0,5	C	0,23	0	DUEVILLE (VI)			M 2.4(O)		
st_name	p_rem	m	w_p	time_s	dist	azm	s_sec	w_s	ain	mx_amp	per	p_calc	p_std	cf	f_p_time	p_res	s_std	s_res	xmag	fmag	
DOSS	e		2	15:29:17.65	38,2	320	22,99	2	105							0,07		0,14	1,9	2	
PANI	e	d	1	15:29:19.78	50,2	345			101						57	0,21			1,9	1,9	
VARA	e	d	1	15:29:20.00	52,7	296	26,75	3	101							0,02		-0,38	2,5	2,4	
GAGG	e		2	15:29:22.52	67	321			99							0,11			2,3	1,9	
ZIAN	e		2	15:29:23.50	73,7	4			98							-0,03			2,4	2,5	
RNI	e		2	15:29:24.74	79,5	301			97						55	0,22			2,1	2,3	
OZOL	e		2	15:29:27.33	94,3	338			96							0,3			2,5	2,3	
CARE	e		2	15:29:29.72	109,5	325			95							0,11			2,1	2,1	

08/03/2013	15:30:55,56	45,6056	11,4901	13,36	1,4	1,7	0	0	0,8	90	0	0,8	B	0,14	0	DUEVILLE (VI)				M 1.6(O)	
st_name	p_rem	m	w_p	time_s	dist	azm	s_sec	w_s	ain	mx_amp	per	p_calc	p_std	cf	f_p_time	p_res	s_std	s_res	xmag	fmag	
DOSS	e	c	1	15:31:02.73	38,5	322	7,61	2	109							0,21		-0,34	1,3	1,1	
PANI	e		2	15:31:04.55	50,9	346			105							-0,01			1,1	1	
VARA	i	c	1	15:31:04.95	52,3	298	11,77	2	104					32		0,16		-0,22	1,5	1,4	

QUATERLY BULLETTIN *January-March 2013*

DATE	TIME	Geogr. Coord.		DEPTH	Magnitude		LOCATION ERRORS						RMS	TYPE	EPICENTRAL AREA		NOTES	
DD-MM-YY	HH/MM/SS	LAT N	LON E	h (Km)	MA	MD	az1	dp1	se1	az2	dp2	se2	q					

10/03/2013	09:48:02,31	46,3446	10,8578	3,45	1	1	0	0	0,6	90	0	0,6	C	0,1	0	MALE' (TN)				
st_name	p_rem	m	w_p	time_s	dist	azm	s_sec	w_s	ain	mx_amp	per	p_calc	p_std	cf	f_p_time	p_res	s_std	s_res	xmag	fmag
CARE	i	c	0	09:48:05.08	15,2	306	6,95	2	103						16	0,09		-0,12	0	0
OZOL	i	c	1	09:48:05.15	16,3	66	7,43	2	102						10	-0,02		0,04	0,7	0,5

10/03/2013	11:05:30,94	45,7798	10,9848	15,26	0,9	1,8	0	0	0,9	90	0	0,9	C	0,1	0	ALA (TN)							
st_name	p_rem	m	w_p	time_s	dist	azm	s_sec	w_s	ain	mx_amp	per	p_calc	p_std	cf	f_p_time	p_res	s_std	s_res	xmag	fmag			
VARA	i	c	1	11:05:34.10	8,6	307	36,18	2	151						31	0,16		-0,09	1	0,4			

11/03/2013	07:28:48,67	45,7921	11,1965	11,3	0,8		0	0	0,7	90	0	0,7	B	0,06	0	PASUBIO (TN)							
st_name	p_rem	m	w_p	time_s	dist	azm	s_sec	w_s	ain	mx_amp	per	p_calc	p_std	cf	f_p_time	p_res	s_std	s_res	xmag	fmag			
DOSS	e		2	07:28:51.33	9,8	357	53,24	2	139							0,1		0,02	0,5	0,8			
VARA	e		3	07:28:53.26	23,6	279			116							0,11			0	0			
PANI	e	d	2	07:28:54.25	30,7	20			110							-0,01			0,5	0,4			
GAGG	e		2	07:28:55.20	37,3	330			107							-0,13			0	1,3			

11/03/2013	10:56:33,07	46,1330	11,1850	6,09	1,3	1,5	0	0	0,2	90	0	0,2	B	0,05	2	ALBIANO (TN)			EXPL?	
st_name	p_rem	m	w_p	time_s	dist	azm	s_sec	w_s	ain	mx_amp	per	p_calc	p_std	cf	f_p_time	p_res	s_std	s_res	xmag	fmag
PANI	i	c	1	10:56:35.80	14,8	128				112					21	0			1,3	1,2
GAGG	e	c	2	10:56:36.33	18,3	253				108					23	-0,05			1	0
DOSS	e	c	2	10:56:38.01	28,1	179				102						0,02			0	0
ZIAN	i	c	1	10:56:38.87	33,2	61				100						0,02			1,1	0
CARE	i	c	1	10:56:41.61	49,6	311				97						-0,01			0	0

11/03/2013	11:26:04,07	46,2940	9,9891	0,31	1,5		0	0	0	90	0	0	C	0,04	0	FRANSCIA (SO)				
st_name	p_rem	m	w_p	time_s	dist	azm	s_sec	w_s	ain	mx_amp	per	p_calc	p_std	cf	f_p_time	p_res	s_std	s_res	xmag	fmag
CARE	e		2	11:26:13.77	56,4	75				90						0,05			1,7	0

11/03/2013	14:56:54,10	45,5926	10,3968	13,88	1,4		0	0	4,3	90	0	4,3	D	0,07	0	GAVARDO (BS)					
st_name	p_rem	m	w_p	time_s	dist	azm	s_sec	w_s	ain	mx_amp	per	p_calc	p_std	cf	f_p_time	p_res	s_std	s_res	xmag	fmag	
RNI	e		2	14:57:02.56	46,6	22				107						0,15			1	1,3	

12/03/2013	07:57:59,46	,	,											0	OZOL							
st_name	p_rem	m	w_p	time_s	dist	azm	s_sec	w_s	ain	mx_amp	per	p_calc	p_std	cf	f_p_time	p_res	s_std	s_res	xmag	fmag		
OZOL	i	c	1	07:57:59.46			60,55	2							48							

12/03/2013	09:51:11,19	46,3530	10,3245	8,66	1	1,1	0	0	0	90	0	0	C	0,03	0	VALLE GROSINA (SO)					
st_name	p_rem	m	w_p	time_s	dist	azm	s_sec	w_s	ain	mx_amp	per	p_calc	p_std	cf	f_p_time	p_res	s_std	s_res	xmag	fmag	
CARE	i	d	1	09:51:16.51	29,8	75				106					14	0,02			0	1	

QUATERLY BULLETTIN *January-March 2013*

DATE	TIME	Geogr. Coord.		DEPTH	Magnitude		LOCATION ERRORS						RMS	TYPE	EPICENTRAL AREA	NOTES
DD-MM-YY	HH/MM/SS	LAT N	LON E	h (Km)	MA	MD	az1	dp1	se1	az2	dp2	se2	q			

13/03/2013	04:26:44,18	45,8235	11,0840	15,88	0,5	0,3	0	0	0,6	90	0	0,6	B	0,08	0	VALLARSA (TN)				
st_name	p_rem	m	w_p	time_s	dist	azm	s_sec	w_s	ain	mx_amp	per	p_calc	p_std	cf	f_p_time	p_res	s_std	s_res	xmag	fmag
DOSS	i	c	1	04:26:47.56	10,3	52	49,94	2	147						6	0,15		0	0	0,2
VARA	e	d	1	04:26:47.90	14,6	271	50,68	2	137							0,04		-0,06	0,4	0,2
GAGG	e		2	04:26:49.98	30,5	341				118						-0,08			0	0,9

13/03/2013	05:57:00,84	45,8288	11,0788	15,7	0,5		0	0	0,7	90	0	0,7	B	0,11	0	TRAMBILENO (TN)					
st_name	p_rem	m	w_p	time_s	dist	azm	s_sec	w_s	ain	mx_amp	per	p_calc	p_std	cf	f_p_time	p_res	s_std	s_res	xmag	fmag	
DOSS	i	c	1	05:57:04.21	10,3	56	6,59	2	147							0,16		0,04	0,2	0	
VARA	i	d	1	05:57:04.54	14,2	269	7,23	2	138							0,08		-0,05	0,5	0,2	
GAGG	e		2	05:57:06.63	29,8	342	10,89	2	118							0,03		-0,2	0,8	0,8	

13/03/2013	06:42:29,40	45,8256	11,0783	15,83	0,8		0	0	0,5	90	0	0,5	B	0,06	0	VALLARSA (TN)			DOUBLE EVENT	
st_name	p_rem	m	w_p	time_s	dist	azm	s_sec	w_s	ain	mx_amp	per	p_calc	p_std	cf	f_p_time	p_res	s_std	s_res	xmag	fmag
DOSS	e		1	06:42:32.76	10,5	55	35,14	2	146							0,12		-0,03	0,6	0,7
VARA	e		2	06:42:33.10	14,1	270	35,8	2	138							0,08		-0,05	0,6	0,4
GAGG	e		1	06:42:35.19	30,1	342				118						-0,02			0,7	0,9

13/03/2013	06:42:54,87	,	,											0	DOSS,VARA					
st_name	p_rem	m	w_p	time_s	dist	azm	s_sec	w_s	ain	mx_amp	per	p_calc	p_std	cf	f_p_time	p_res	s_std	s_res	xmag	fmag
DOSS	i	c	2	06:42:54.87			57,22	2							21					
VARA	i	d	2	06:42:55.23			57,9	3							21					

13/03/2013	06:43:22,18	,	,											0	DOSS,VARA					
st_name	p_rem	m	w_p	time_s	dist	azm	s_sec	w_s	ain	mx_amp	per	p_calc	p_std	cf	f_p_time	p_res	s_std	s_res	xmag	fmag
DOSS	i	c	1	06:43:22.18			24,56	1							28					
VARA	i	d	2	06:43:22.51			25,24	3							30					

13/03/2013	15:52:05,85	46,1225	11,2180	7,08	0,9	1,7	0	0	0,2	90	0	0,2	B	0,02	2	FORNACE (TN)			EXPL?	
st_name	p_rem	m	w_p	time_s	dist	azm	s_sec	w_s	ain	mx_amp	per	p_calc	p_std	cf	f_p_time	p_res	s_std	s_res	xmag	fmag
PANI	i	c	1	15:52:08.23	12,1	131				120						-0,01			1	0,8
GAGG	e		2	15:52:09.54	20,5	258				109					24	-0,02			0,7	0
DOSS	e	c	2	15:52:10.64	27,1	185				105						0,01			0	0,9
ZIAN	e		2	15:52:11.38	31,7	57				103						-0,01			0,9	1
CARE	e	c	2	15:52:14.85	52,3	310				98						-0,02			0	0

13/03/2013	16:43:34,99	46,1386	11,1836	5,41	1,3	1,5	0	0	0,2	90	0	0,2	B	0,06	2	ALBIANO (TN)			EXPL? M 1.1(O)		
st_name	p_rem	m	w_p	time_s	dist	azm	s_sec	w_s	ain	mx_amp	per	p_calc	p_std	cf	f_p_time	p_res	s_std	s_res	xmag	fmag	
PANI	i	c	0	16:43:37.77	15,2	130			110						21	0,01			1,7	1,3	
GAGG	i	c	1	16:43:38.25	18,4	251			106						19	-0,03			1,4	1,2	
DOSS	i	c	0	16:43:40.01	28,7	179			101						25	0,02			1,3	1,3	
OZOL	e		2	16:43:40.39	31,1	341			100						23	-0,01			1,5	1,2	
ZIAN	e	c	1	16:43:40.71	33	62			99							-0,01			1,3	1,2	
VARA	e		2	16:43:42.21	41,3	213			97							0,1			1,3	1,1	
CARE	e	c	1	16:43:43.41	49,1	310			96							-0,04			0	1	

QUATERLY BULLETTIN *January-March 2013*

DATE	TIME	Geogr. Coord.		DEPTH	Magnitude		LOCATION ERRORS						RMS	TYPE	EPICENTRAL AREA	NOTES
DD-MM-YY	HH/MM/SS	LAT N	LON E	h (Km)	MA	MD	az1	dp1	se1	az2	dp2	se2	q			

13/03/2013	17:09:55,49	46,1348	11,1860	1,72	0,9		0	0	0	90	0	0	C	0	2	ALBIANO (TN)			EXPL?	
st_name	p_rem	m	w_p	time_s	dist	azm	s_sec	w_s	ain	mx_amp	per	p_calc	p_std	cf	f_p_time	p_res	s_std	s_res	xmag	fmag
PANI	e		2	17:09:58.04	14,8	129				97						0			0,8	0,6
GAGG	e		2	17:09:58.66	18,5	252				95						0			0,9	0,6
DOSS	e		2	17:10:00.34	28,3	180				93						0			0	0,9

14/03/2013	06:25:53,82	,	,											0	CARE							
st_name	p_rem	m	w_p	time_s	dist	azm	s_sec	w_s	ain	mx_amp	per	p_calc	p_std	cf	f_p_time	p_res	s_std	s_res	xmag	fmag		
CARE			2	06:25:53.82			54,17	3							38							

14/03/2013	17:34:04,42	46,1323	11,1773	3,4	1,2		0	0	0,7	90	0	0,7	C	0,1	2	ALBIANO (TN)			EXPL?	
st_name	p_rem	m	w_p	time_s	dist	azm	s_sec	w_s	ain	mx_amp	per	p_calc	p_std	cf	f_p_time	p_res	s_std	s_res	xmag	fmag
GAGG	e		2	17:34:07.53	17,8	252				101						0,02			1	0,9
DOSS	e		2	17:34:09.23	28,1	178				97						-0,02			0	0
ZIAN	e		2	17:34:10.07	33,8	62				96						-0,16			1,1	0,6
CARE	e		2	17:34:12.92	49,2	311				94						0,06			1,2	1,2

14/03/2013	20:01:26,21	,	,											10	LUNIGIANA				M 2.6(l)	
st_name	p_rem	m	w_p	time_s	dist	azm	s_sec	w_s	ain	mx_amp	per	p_calc	p_std	cf	f_p_time	p_res	s_std	s_res	xmag	fmag
VARA			3	20:01:26.21			48,19	3							128					
DOSS			3	20:01:27.72			52,06	3							127					
RNI			3	20:01:28.04			50,72	3							127					
GAGG			3	20:01:28.32			52,81	3							127					
CARE			3	20:01:34.64			59,32	3							123					
ZIAN			3	20:01:35.11			62,13	3							126					

15/03/2013	11:07:22,19	46,1298	11,1903	6,6	1,1	1,8	0	0	0,5	90	0	0,5	C	0,04	2	ALBIANO (TN)			EXPL?	
st_name	p_rem	m	w_p	time_s	dist	azm	s_sec	w_s	ain	mx_amp	per	p_calc	p_std	cf	f_p_time	p_res	s_std	s_res	xmag	fmag
PANI	e		1	11:07:24.84	14,2	128			115						30	-0,03			1	1,2
GAGG	e	c	1	11:07:25.56	18,6	254			109							-0,01			0,8	0
DOSS	e	c	2	11:07:27.12	27,8	180			103							0,05			0,9	1,1
ZIAN	i	c	1	11:07:27.93	33,1	60			101							-0,02			1,1	1
CARE	e	c	1	11:07:30.81	50,2	311			97							-0,03			0	1,2

15/03/2013	15:51:20,61	46,1413	11,1713	3,2	1,3	1,8	0	0	0,5	90	0	0,5	C	0,1	2	ALBIANO (TN)			EXPL?	
st_name	p_rem	m	w_p	time_s	dist	azm	s_sec	w_s	ain	mx_amp	per	p_calc	p_std	cf	f_p_time	p_res	s_std	s_res	xmag	fmag
PANI	e		2	15:51:23.35	16,2	129				101						-0,08			1,5	1,3
GAGG	e	c	2	15:51:23.73	17,7	249				100					30	0,05			1,3	1,2
DOSS	e	c	2	15:51:25.58	29,1	177				96						-0,04			1,1	1,3
OZOL	e		2	15:51:25.95	30,5	342				96						0,08			1,2	1,3
ZIAN	e	c	1	15:51:26.31	33,8	64				95						-0,1			1,3	1,2
CARE	e	c	2	15:51:28.87	48,2	311				94						-0,01			1,3	1,2

15/03/2013	16:22:24,89	45,8583	11,3733	6,93	1,1	1,8	0	0	0,2	90	0	0,2	B	0,03	0	ROTZO (VI)					
st_name	p_rem	m	w_p	time_s	dist	azm	s_sec	w_s	ain	mx_amp	per	p_calc	p_std	cf	f_p_time	p_res	s_std	s_res	xmag	fmag	
DOSS	i	c	1	16:22:27.58	14,5	280	29,83	2	116						31	-0,07		0,04	1,2	1,2	
VARA	e		2	16:22:31.43	37,2	264	36,39	3	101							0,06		-0,02	0,9	0,9	
ZIAN	e	d	2	16:22:33.31	48,7	18				98						0			1,2	1,2	

QUATERLY BULLETTIN *January-March 2013*

DATE	TIME	Geogr. Coord.		DEPTH	Magnitude		LOCATION ERRORS						RMS	TYPE	EPICENTRAL AREA	NOTES
DD-MM-YY	HH/MM/SS	LAT N	LON E	h (Km)	MA	MD	az1	dp1	se1	az2	dp2	se2	q			

15/03/2013	21:13:15,20	,	,										0	OZOL,CARE						
st_name	p_rem	m	w_p	time_s	dist	azm	s_sec	w_s	ain	mx_amp	per	p_calc	p_std	cf	f_p_time	p_res	s_std	s_res	xmag	fmag
OZOL	i	d	1	21:13:15.20	10,7	115	17,36	2	137						6	-0,05		0,02	-0,2	-0,3
CARE	i	c	1	21:13:16.20	17,7	263	18,95	3	123							0,04		-0,02	0,9	0

16/03/2013	19:04:44,15	,	,											10	FORNI DI SOTTO (UD)	M 1.7(O)				
st_name	p_rem	m	w_p	time_s	dist	azm	s_sec	w_s	ain	mx_amp	per	p_calc	p_std	cf	f_p_time	p_res	s_std	s_res	xmag	fmag
ZIAN			3	19:04:44.15											81					
PANI			3	19:04:48.78			66,66	3							79					
OZOL			3	19:04:51.25											78					
DOSS			3	19:04:51.92			70,79	3							78					
GAGG			3	19:04:53.76			73,51	3							78					
VARA			3	19:04:55.75			76,73	2							79					
CARE			3	19:04:56.59			75,21	3							78					
RNI			3	19:04:58.46			80,82	3							78					

16/03/2013	20:18:22.77		,	,											10	ALPI ATESINE				M 2.7(I)			
st_name	p_rem	m	w_p	time_s	dist	azm	s_sec	w_s	ain	mx_amp	per	p_calc	p_std	cf	f_p_time	p_res	s_std	s_res	xmag	fmag			
OZOL	e	d	2	20:18:22.77			32,07	2							142								
CARE			3	20:18:23.90			34,35	3							138								
ZIAN	i	d	2	20:18:25.68			37,19	3							144								
GAGG			3	20:18:28.69			42,76	3							140								
PANI	e	d	2	20:18:29.17			43,84	3							141								
RNI			3	20:18:31.36			47,29	3							141								
DOSS	e	d	2	20:18:32.15			48,23	2							138								
VARA			3	20:18:33.74			51,64	3							141								

17/03/2013	01:40:42,35	45,9363	11,9581	9,35	0,9	1	0	0	1	90	0	1	C	0,14	0	SEGUSINO (TV)					
st_name	p_rem	m	w_p	time_s	dist	azm	s_sec	w_s	ain	mx_amp	per	p_calc	p_std	cf	f_p_time	p_res	s_std	s_res	xmag	fmag	
ZIAN	e		2	01:40:51.12	48,6	321	57,39	2	101							0,31		-0,02	0,9	0,9	
PANI	e		2	01:40:51.23	49,9	285	57,56	2	101							0,2		-0,25	0,8	0,6	
DOSS	e		2	01:40:52.77	60	264				99						0,04			1,3	0	

17/03/2013	01:45:59,92	45,8078	11,4100	9,73	0,8	1,8	0	0	0,8	90	0	0,8	C	0,18	0	ARSIERO (VI)				
st_name	p_rem	m	w_p	time_s	dist	azm	s_sec	w_s	ain	mx_amp	per	p_calc	p_std	cf	f_p_time	p_res	s_std	s_res	xmag	fmag
DOSS	i	c	0	01:46:03.77	19	295	6,65	2	117						29	0,2		0,24	1	0,7
PANI	e		1	01:46:05.03	27,6	348	8,64	2	109							0,1		-0,2	0,7	0,5
VARA	e		2	01:46:06.82	40	273	12,19	3	104							-0,13		-0,25	0	0
ZIAN	e		2	01:46:09.03	53,4	13				100						-0,17			0,9	0

17/03/2013	15:53:59,08	45,8490	10,9295	15,91	0,9	1,3	0	0	0,5	90	0	0,5	A	0,13	0	BRENTONICO (TN)					
st_name	p_rem	m	w_p	time_s	dist	azm	s_sec	w_s	ain	mx_amp	per	p_calc	p_std	cf	f_p_time	p_res	s_std	s_res	xmag	fmag	
VARA	i	c	1	15:54:02.04	3,6	225	4,18	2	167						27	0,17		0,14	0	-0,1	
DOSS	i	c	0	15:54:03.53	20,4	80	6,7	2	128						26	0,02		-0,26	0,8	0	
GAGG	e		1	15:54:04.40	26,2	5	8,16	1	121						8	0,09		-0,24	0	0	
CARE	e		2	15:54:10.93	66,4	344			103							0,17			0	0	
ZIAN	e	d	2	15:54:11.04	68,3	46			103							-0,02			0,9	0	

QUATERLY BULLETTIN *January-March 2013*

DATE	TIME	Geogr. Coord.		DEPTH	Magnitude		LOCATION ERRORS						RMS	TYPE	EPICENTRAL AREA		NOTES	
DD-MM-YY	HH/MM/SS	LAT N	LON E	h (Km)	MA	MD	az1	dp1	se1	az2	dp2	se2	q					

17/03/2013	18:34:31,93	45,8536	10,9285	16,21	0,7	1,6	0	0	0,8	90	0	0,8	B	0,13	0	MORI (TN)		
------------	-------------	---------	---------	-------	-----	-----	---	---	-----	----	---	-----	---	------	---	-----------	--	--

st_name	p_rem	m	w_p	time_s	dist	azm	s_sec	w_s	ain	mx_amp	per	p_calc	p_std	cf	f_p_time	p_res	s_std	s_res	xmag	fmag
VARA	e		1	18:34:34.90	4	219	37,05	2	166							0,12		0,05	0	0
DOSS	i	c	0	18:34:36.41	20,4	82	39,63	2	128						23	0,03		-0,23	0,8	1
GAGG	e	c	1	18:34:37.29	25,7	5	41,03	2	122							0,18		-0,13	1,2	0

17/03/2013	19:15:40,92	45,6916	10,1246	6,81	1,8	1,8	0	0	1,8	90	0	1,8	C	0,24	0	G. VAL TROMPIA (BS)		M 1.6(O)	
------------	-------------	---------	---------	------	-----	-----	---	---	-----	----	---	-----	---	------	---	---------------------	--	----------	--

st_name	p_rem	m	w_p	time_s	dist	azm	s_sec	w_s	ain	mx_amp	per	p_calc	p_std	cf	f_p_time	p_res	s_std	s_res	xmag	fmag
RNI	e		2	19:15:49.38	50,3	50	56,33	3	98						26	-0,22		-0,04	1,5	1,8
DOSS	e		2	19:15:55.66	85,4	76			95							0,1			1,8	1,8
CARE	e		3	19:15:56.95	92,7	29			94							0,14			1,9	1,6
OZOL	e		2	19:15:59.46	106,8	42			94							0,25			1,5	1,5
ZIAN	e		2	19:16:03.24	129	60			93							0,23			1,6	1,6

18/03/2013	02:41:34,52	,	,												10	ZONA CHIANTI		M 3.6(I)	
------------	-------------	---	---	--	--	--	--	--	--	--	--	--	--	--	----	--------------	--	----------	--

st_name	p_rem	m	w_p	time_s	dist	azm	s_sec	w_s	ain	mx_amp	per	p_calc	p_std	cf	f_p_time	p_res	s_std	s_res	xmag	fmag
VARA			3	02:41:34.52											257					
DOSS			3	02:41:34.92			66	3							254					
RNI			3	02:41:37.80											257					
PANI			3	02:41:37.95											256					
GAGG			3	02:41:38.17											255					
ZIAN			3	02:41:40.92			78,06	3							258					
OZOL			3	02:41:43.24			82,19	3							252					
CARE			3	02:41:44.11			82,92	3							250					

18/03/2013	03:07:33,78	,	,												0	RNI			
------------	-------------	---	---	--	--	--	--	--	--	--	--	--	--	--	---	-----	--	--	--

st_name	p_rem	m	w_p	time_s	dist	azm	s_sec	w_s	ain	mx_amp	per	p_calc	p_std	cf	f_p_time	p_res	s_std	s_res	xmag	fmag
RNI			3	03:07:33.78			34,73	3							36					

18/03/2013	05:24:38,44	,	,												0	RNI			
------------	-------------	---	---	--	--	--	--	--	--	--	--	--	--	--	---	-----	--	--	--

st_name	p_rem	m	w_p	time_s	dist	azm	s_sec	w_s	ain	mx_amp	per	p_calc	p_std	cf	f_p_time	p_res	s_std	s_res	xmag	fmag
RNI	i	d	2	05:24:38.44			39,31	3							31					

18/03/2013	09:34:10,14	,	,												10				
------------	-------------	---	---	--	--	--	--	--	--	--	--	--	--	--	----	--	--	--	--

st_name	p_rem	m	w_p	time_s	dist	azm	s_sec	w_s	ain	mx_amp	per	p_calc	p_std	cf	f_p_time	p_res	s_std	s_res	xmag	fmag
ZIAN			3	09:34:10.14											88					
OZOL			3	09:34:11.99			26,06	3							89					
CARE			3	09:34:14.99			31,3	3							86					
GAGG			3	09:34:17.30			35,06	3							87					

18/03/2013	13:24:58,63	46,3783	10,6158	8,83	1,5	1,5	0	0	0,6	90	0	0,6	B	0,27	0	PEJO (TN)		M 1.3(O)	
------------	-------------	---------	---------	------	-----	-----	---	---	-----	----	---	-----	---	------	---	-----------	--	----------	--

st_name	p_rem	m	w_p	time_s	dist	azm	s_sec	w_s	ain	mx_amp	per	p_calc	p_std	cf	f_p_time	p_res	s_std	s_res	xmag	fmag
CARE	i	c	0	13:25:00.90	8,1	51	2,23	1	137						21	0,22		-0,05	1,5	1,6
OZOL	e	d	1	13:25:04.61	33,6	85	8,88	2	105						17	0,03		-0,33	1,5	1,6
GAGG	e	d	1	13:25:06.15	42,1	141	11,45	2	102						34	0,16		-0,27	0	1,6
RNI	e	d	0	13:25:06.63	44,2	179	12,02	2	101						24	0,3		-0,32	1,3	1,4
DOSS	e		2	13:25:10.97	70,9	141			97							0,12			0	0
ZIAN	e		2	13:25:11.47	73,8	99			97							0,13			1,3	1,2

QUATERLY BULLETTIN *January-March 2013*

DATE	TIME	Geogr. Coord.		DEPTH	Magnitude		LOCATION ERRORS						RMS	TYPE	EPICENTRAL AREA	NOTES
DD-MM-YY	HH/MM/SS	LAT N	LON E	h (Km)	MA	MD	az1	dp1	se1	az2	dp2	se2	q			

18/03/2013	13:45:33,18	46,8711	11,2966	6,38	1,3	1,5	0	0	0,8	90	0	0,8	C	0,04	0	VAL RIDANNA (BZ)					
st_name	p_rem	m	w_p	time_s	dist	azm	s_sec	w_s	ain	mx_amp	per	p_calc	p_std	cf	f_p_time	p_res	s_std	s_res	xmag	fmag	
CARE	i	c	1	13:45:44.75	67,6	223			95							-0,04			0	1,6	
ZIAN	e		2	13:45:45.13	69,2	163			95							0,07			0	1,2	

18/03/2013	21:49:29,33	45,5825	11,3978	12,34	2,2	2,4	0	0	0,3	90	0	0,3	B	0,09	0	ARZIGNANO (VI)			M 2.1(O)		
st_name	p_rem	m	w_p	time_s	dist	azm	s_sec	w_s	ain	mx_amp	per	p_calc	p_std	cf	f_p_time	p_res	s_std	s_res	xmag	fmag	
DOSS	i	d	0	21:49:36.17	36,9	334	41,21	2	109						59	0,2		0,06	1,9	1,8	
VARA	i	d	1	21:49:37.91	47,5	305			105							0,19			2,7	2,5	
PANI	i	d	0	21:49:38.58	52,3	355			103						55	0,07			1,6	1,6	
GAGG	e		1	21:49:40.79	65,3	328			101						47	0,1			2,1	2	
RNI	e		2	21:49:42.46	74,8	306			99							0,17			2	2,1	
ZIAN	e	d	1	21:49:42.70	78,2	9			99							-0,16			2,3	2,2	
OZOL	e		1	21:49:45.69	95,1	344			97							-0,03			2,1	2	
CARE	e	d	0	21:49:47.99	108,2	330			97							0,05			2,1	2,1	

19/03/2013	01:51:17,82	46,5045	10,6750	5,33	0,8	1	0	0	0,9	90	0	0,9	C	0,08	0	CIMA VERTANA (BZ)					
st_name	p_rem	m	w_p	time_s	dist	azm	s_sec	w_s	ain	mx_amp	per	p_calc	p_std	cf	f_p_time	p_res	s_std	s_res	xmag	fmag	
CARE	i	c	0	01:51:19.63	9,1	169	21,03	1	120						14	0		0	0	0,7	

19/03/2013	08:05:02,55														10					
st_name	p_rem	m	w_p	time_s	dist	azm	s_sec	w_s	ain	mx_amp	per	p_calc	p_std	cf	f_p_time	p_res	s_std	s_res	xmag	fmag
VARA			3	08:05:02.55			18,32	3							96					
RNI			3	08:05:03.74			20,03	3							96					
GAGG			3	08:05:04.94			23,41	3							96					
DOSS			3	08:05:05.46			22,6	3							96					
CARE			3	08:05:09.78											94					

19/03/2013	11:05:33,70	46,1246	11,2291	3,19	1		0	0	0	90	0	0	C	0	2	BASELGA DI P. (TN)		EXPL?		
st_name	p_rem	m	w_p	time_s	dist	azm	s_sec	w_s	ain	mx_amp	per	p_calc	p_std	cf	f_p_time	p_res	s_std	s_res	xmag	fmag
PANI	e		2	11:05:35.75	11,6	135				105						0			1	0,7
GAGG	e		2	11:05:37.40	21,4	258				98						0			0	1
DOSS	e		2	11:05:38.41	27,4	187				97						0			0,9	1
ZIAN	e	d	2	11:05:38.99	30,8	57				96						0			1	0,7

19/03/2013	20:32:34,60	46,6560	10,8856	8,23	0,8	1	0	0	0,8	90	0	0,8	C	0,19	0	LACES (BZ)					
st_name	p_rem	m	w_p	time_s	dist	azm	s_sec	w_s	ain	mx_amp	per	p_calc	p_std	cf	f_p_time	p_res	s_std	s_res	xmag	fmag	
CARE	i	c	1	20:32:39.83	29,5	209	43,69	2	106							-0,01		-0,23	1	0	
OZOL	e		2	20:32:40.18	30,8	156			105							0,12			0,4	0,5	

20/03/2013	12:50:24,27	46,5775	10,1675	13,67	1,2	1,4	0	0	2,6	90	0	2,6	D	0,21	0	LIVIGNO (SO)				M 1.6(S)	
st_name	p_rem	m	w_p	time_s	dist	azm	s_sec	w_s	ain	mx_amp	per	p_calc	p_std	cf	f_p_time	p_res	s_std	s_res	xmag	fmag	
CARE	e		1	12:50:32.32	44,1	113	37,97	2	107							0,16		-0,35	0	1,1	

QUATERLY BULLETTIN *January-March 2013*

DATE	TIME	Geogr. Coord.		DEPTH	Magnitude		LOCATION ERRORS						RMS	TYPE	EPICENTRAL AREA	NOTES
DD-MM-YY	HH/MM/SS	LAT N	LON E	h (Km)	MA	MD	az1	dp1	se1	az2	dp2	se2	q			

20/03/2013	12:58:44,76	46,5255	10,1901	15,77	0,6	1,1	0	0	1,5	90	0	1,5	C	0,09	0	LIVIGNO (SO)					
st_name	p_rem	m	w_p	time_s	dist	azm	s_sec	w_s	ain	mx_amp	per	p_calc	p_std	cf	f_p_time	p_res	s_std	s_res	xmag	fmag	
CARE	e		2	12:58:52.27	40,5	106	57,99	2	111						15	0,07		-0,01	0,9	0	

20/03/2013	13:17:52,27	46,5483	10,1908	14,17	0,7	0,9	0	0	1,8	90	0	1,8	C	0,1	0	LIVIGNO (SO)				
st_name	p_rem	m	w_p	time_s	dist	azm	s_sec	w_s	ain	mx_amp	per	p_calc	p_std	cf	f_p_time	p_res	s_std	s_res	xmag	fmag
CARE	e	d	1	13:17:59.85	41,3	109	65,49	2	109							0,12		-0,05	0,9	0

20/03/2013	15:46:15.60	,	,											0	CARE					
st_name	p_rem	m	w_p	time_s	dist	azm	s_sec	w_s	ain	mx_amp	per	p_calc	p_std	cf	f_p_time	p_res	s_std	s_res	xmag	fmag
CARE			3	15:46:15.60			15.93	3							23					

20/03/2013	17:37:16,79	45,8226	11,0811	15,69	0,6	0,8	0	0	0,6	90	0	0,6	B	0,08	0	VALLARSA (TN)					
st_name	p_rem	m	w_p	time_s	dist	azm	s_sec	w_s	ain	mx_amp	per	p_calc	p_std	cf	f_p_time	p_res	s_std	s_res	xmag	fmag	
DOSS	i	c	1	17:37:20.17	10,5	53	22,56	1	146						10	0,15		0,02	0	0,3	
VARA	e	d	2	17:37:20.50	14,4	271	23,21	2	138							0,07		-0,06	0,5	0,2	
GAGG	e	d	1	17:37:22.59	30,5	342				117						-0,07			1	0	

20/03/2013	17:52:08,89	,	,											10	CIVIDATE PIANO (BG)				M 2.0(O)			
st_name	p_rem	m	w_p	time_s	dist	azm	s_sec	w_s	ain	mx_amp	per	p_calc	p_std	cf	f_p_time	p_res	s_std	s_res	xmag	fmag		
RNI			3	17:52:08.89			19,47	3							77							
VARA			3	17:52:11.08			24,08	3							77							
GAGG			3	17:52:14.50			28,82	3							76							
DOSS			3	17:52:14.79			29,73	3							77							
CARE			3	17:52:16.24			30,38	3							77							
PANI			3	17:52:17.61			33,75	3							75							
OZOL			3	17:52:19.14			36,55	3							75							
ZIAN			3	17:52:21.80			41,84	3							76							

20/03/2013	17:54:51,49	45,7798	10,6726	10,35	1,4	2,4	0	0	0,5	90	0	0,5	B	0,09	0	VALVESTINO (BS)					
st_name	p_rem	m	w_p	time_s	dist	azm	s_sec	w_s	ain	mx_amp	per	p_calc	p_std	cf	f_p_time	p_res	s_std	s_res	xmag	fmag	
VARA	e		1	17:54:54.96	18,1	74	57,82	2	120						59	-0,1		-0,02	1,4	1,6	
RNI	i	d	0	17:54:55.87	22,7	350	59,2	2	115						42	0,12		0,13	1,6	1,6	
GAGG	e		2	17:54:58.47	40,4	33	64,28	2	104							-0,14		0,11	1,2	1,2	
DOSS	e		2	17:54:58.84	41,6	74			104						52	0,02			1,4	1,4	
ZIAN	e		2	17:55:06.50	88,3	51			97							-0,19			1,3	1,3	

20/03/2013	21:20:01,21	45,8233	11,0721	15,83	0,6	1,6	0	0	0,7	90	0	0,7	B	0,14	0	VALLARSA (TN)							
st_name	p_rem	m	w_p	time_s	dist	azm	s_sec	w_s	ain	mx_amp	per	p_calc	p_std	cf	f_p_time	p_res	s_std	s_res	xmag	fmag			
DOSS	i	c	0	21:20:04.65	11	55	7,03	2	145							0,15		-0,05	0,3	0,4			
VARA	i	d	0	21:20:04.96	13,7	271	7,66	2	139						23	0,18		0,09	0,5	0			
GAGG	i	d	1	21:20:07.08	30,2	343	11,35	2	118						21	0,04		-0,24	0	0,8			

21/03/2013	06:40:17,86	,	,											0	RNI					
st_name	p_rem	m	w_p	time_s	dist	azm	s_sec	w_s	ain	mx_amp	per	p_calc	p_std	cf	f_p_time	p_res	s_std	s_res	xmag	fmag
RNI			3	06:40:17.86			19,46	2							34					

QUATERLY BULLETTIN *January-March 2013*

DATE	TIME	Geogr. Coord.		DEPTH	Magnitude		LOCATION ERRORS						RMS	TYPE	EPICENTRAL AREA	NOTES
DD-MM-YY	HH/MM/SS	LAT N	LON E	h (Km)	MA	MD	az1	dp1	se1	az2	dp2	se2	q			

21/03/2013	10:21:15,35	46,3491	10,3231	6,17	0,8	1	0	0	1,5	90	0	1,5	C	0,05	0	VALLE GROSINA (SO)				
st_name	p_rem	m	w_p	time_s	dist	azm	s_sec	w_s	ain	mx_amp	per	p_calc	p_std	cf	f_p_time	p_res	s_std	s_res	xmag	fmag
CARE	i	d	1	10:21:20.54	30	74			102							-0,04			0	0
GAGG	e		2	10:21:25.27	57,2	121			96							0,08			0	0

21/03/2013	10:26:41,09	,	,											10	PIANURA PADANA EMIL.	M 2.4(I)				
st_name	p_rem	m	w_p	time_s	dist	azm	s_sec	w_s	ain	mx_amp	per	p_calc	p_std	cf	f_p_time	p_res	s_std	s_res	xmag	fmag
VARA			3	10:26:41.09			57,04	3							111					
DOSS			3	10:26:41.55			55,72	3							113					
PANI			3	10:26:44.58			61,32	3							111					
RNI			3	10:26:44.92			62,85	3							111					
GAGG	i	d	2	10:26:45.58			63,25	2							112					
ZIAN			3	10:26:48.17			67,72	3							113					
OZOL			3	10:26:50.72			72,63	2							109					
CARE			3	10:26:51.44			73,52	3							110					

21/03/2013	11:18:19,14	,	,											10	PIANURA PADANA EMIL.	M 2.6(I)				
st_name	p_rem	m	w_p	time_s	dist	azm	s_sec	w_s	ain	mx_amp	per	p_calc	p_std	cf	f_p_time	p_res	s_std	s_res	xmag	fmag
VARA			3	11:18:19.14			34,88	3							121					
DOSS			3	11:18:19.28			33,62	3							121					
PANI			3	11:18:22.73			39,54	3							119					
GAGG			3	11:18:22.84			41,27	3							120					
RNI			3	11:18:23.16			40,67	3							118					
ZIAN			3	11:18:26.26			45,54	3							118					
OZOL			3	11:18:28.66			50,71	2							117					
CARE			3	11:18:29.64			52,04	3							119					

21/03/2013	17:44:38,92	45,7618	11,0381	12,7	1,1	1,8	0	0	2,8	90	0	2,8	D	0,2	0	ALA (TN)				
st_name	p_rem	m	w_p	time_s	dist	azm	s_sec	w_s	ain	mx_amp	per	p_calc	p_std	cf	f_p_time	p_res	s_std	s_res	xmag	fmag
VARA	i	c	0	17:44:42.23	13,1	303	44,62	2	134						30	0,19		0,14	0,9	1
DOSS	e		2	17:44:42.67	17,6	42	45,22	2	126							0,04		-0,3	0	0
GAGG	e		2	17:44:45.74	36,3	350			109							0,25			1,2	0

21/03/2013	22:42:18,16	45,6030	11,2060	21,05	1,5	1,6	0	0	1	90	0	1	C	0,2	0	VALDAGNO (VI)			M 1.3(O)		
st_name	p_rem	m	w_p	time_s	dist	azm	s_sec	w_s	ain	mx_amp	per	p_calc	p_std	cf	f_p_time	p_res	s_std	s_res	xmag	fmag	
DOSS	i	d	0	22:42:24.86	30,8	358	29,66	2	124						18	0,32		0,14	1,4	1,4	
VARA	e		2	22:42:25.25	34,6	316	30,51	2	121						47	0,17		0,03	1,2	1,1	
PANI	e	d	1	22:42:27.65	50,8	11	34,54	2	113						20	0,09		-0,35	1,2	1,5	
GAGG	e	c	1	22:42:28.54	56,8	340	36,32	2	59							0,03		-0,26	1,5	0	
RNI	e		2	22:42:29.24	61,8	313			59							-0,01			1,6	1,6	
ZIAN	e		2	22:42:32.25	79,8	20			59							0,35			1,8	1,5	

21/03/2013	23:42:53,45	46,7600	10,1001	4,55	1,5	1,4	0	0	1,4	90	0	1,4	D	0,11	0	GUARDA [CH]			M 1.3(S)		
st_name	p_rem	m	w_p	time_s	dist	azm	s_sec	w_s	ain	mx_amp	per	p_calc	p_std	cf	f_p_time	p_res	s_std	s_res	xmag	fmag	
CARE	e		2	23:43:03.41	59	129				94					22	-0,16			0	0	
OZOL	e		2	23:43:07.54	83	119				93						-0,12			1,4	1,5	
RNI	e		2	23:43:10.01	95,5	155				93						0,22			1,4	1,5	

QUATERLY BULLETTIN *January-March 2013*

DATE	TIME	Geogr. Coord.		DEPTH	Magnitude		LOCATION ERRORS						RMS	TYPE	EPICENTRAL AREA	NOTES
DD-MM-YY	HH/MM/SS	LAT N	LON E	h (Km)	MA	MD	az1	dp1	se1	az2	dp2	se2	q			

22/03/2013	03:48:07,08	,	,											0	RNI					
st_name	p_rem	m	w_p	time_s	dist	azm	s_sec	w_s	ain	mx_amp	per	p_calc	p_std	cf	f_p_time	p_res	s_std	s_res	xmag	fmag
RNI	i	d	2	03:48:07.08			7,96	2							27					

22/03/2013	08:14:03,62	,	,											10						
st_name	p_rem	m	w_p	time_s	dist	azm	s_sec	w_s	ain	mx_amp	per	p_calc	p_std	cf	f_p_time	p_res	s_std	s_res	xmag	fmag
DOSS			3	08:14:03.62			18,09	3							84					
VARA			3	08:14:03.78			18,78	3							83					
RNI			3	08:14:07.65			25,51	3							83					
GAGG			3	08:14:07.69			25,25	2							83					
CARE			3	08:14:13.86			36,45	3							82					

22/03/2013	11:00:20,80	46,1378	11,1758	0,35	1,2		0	0	0,2	90	0	0,2	C	0,03	2	ALBIANO (TN)			EXPL?	
st_name	p_rem	m	w_p	time_s	dist	azm	s_sec	w_s	ain	mx_amp	per	p_calc	p_std	cf	f_p_time	p_res	s_std	s_res	xmag	fmag
PANI	e		2	11:00:23.45	15,7	128			91							-0,02			1,2	1,1
GAGG	e	c	1	11:00:23.83	17,9	250			91							-0,02			1	1,1
VARA	e		2	11:00:27.84	40,9	212			90							0,05			0	0
CARE	e		2	11:00:29.11	48,7	311			90							-0,02			0	0

22/03/2013	11:09:50,83	46,1293	11,1926	7	1		0	0	0	90	0	0	C	0,02	2	ALBIANO (TN)			EXPL?	
st_name	p_rem	m	w_p	time_s	dist	azm	s_sec	w_s	ain	mx_amp	per	p_calc	p_std	cf	f_p_time	p_res	s_std	s_res	xmag	fmag
PANI	e		2	11:09:53.51	14	128				116						0			0,9	0,8
GAGG	e		2	11:09:54.21	18,8	254				110						-0,04			0	0,9
ZIAN	e	c	1	11:09:56.58	32,9	60				102						0			1	0

22/03/2013	11:30:41,19	46,1721	11,2061	9,42	0,8		0	0	0,2	90	0	0,2	B	0,02	2	CEMBRA (TN)			EXPL?	
st_name	p_rem	m	w_p	time_s	dist	azm	s_sec	w_s	ain	mx_amp	per	p_calc	p_std	cf	f_p_time	p_res	s_std	s_res	xmag	fmag
PANI	e		2	11:30:44.48	16,8	144				119						0			0,6	0,2
GAGG	e	c	1	11:30:45.20	21,5	243				114						-0,01			1,1	0
OZOL	e		2	11:30:46.26	28,3	335				108						-0,03			0,6	0,4
ZIAN	e		2	11:30:46.52	29,9	67				107						-0,03			0,5	0
CARE	e		2	11:30:49.60	48,2	306				101						0,01			1,2	1,4

22/03/2013	11:31:31,46	46,1823	11,1960	3,3	1		0	0	0,1	90	0	0,1	C	0,01	2	CEMBRA (TN)			EXPL?	
st_name	p_rem	m	w_p	time_s	dist	azm	s_sec	w_s	ain	mx_amp	per	p_calc	p_std	cf	f_p_time	p_res	s_std	s_res	xmag	fmag
PANI	e		2	11:31:34.62	18,1	144				100						0,01			0,5	0,5
GAGG	e	c	2	11:31:35.15	21,4	239				99						-0,01			0	1
DOSS	e		2	11:31:37.23	33,6	181				96						-0,01			1,1	1,1
CARE	e		2	11:31:39.51	46,9	305				94						0,01			1,3	0

22/03/2013	14:09:51,69	,	,											0	CARE					
st_name	p_rem	m	w_p	time_s	dist	azm	s_sec	w_s	ain	mx_amp	per	p_calc	p_std	cf	f_p_time	p_res	s_std	s_res	xmag	fmag
CARE			3	14:09:51.69			53,5	2							44					

QUATERLY BULLETTIN *January-March 2013*

DATE	TIME	Geogr. Coord.		DEPTH	Magnitude		LOCATION ERRORS						RMS	TYPE	EPICENTRAL AREA	NOTES
DD-MM-YY	HH/MM/SS	LAT N	LON E	h (Km)	MA	MD	az1	dp1	se1	az2	dp2	se2	q			

22/03/2013	15:56:57,56	46,1585	11,1888	1,08	1,1	1,5	0	0	0	90	0	0	C	0,01	2	LISIGNAGO (TN)	EXPL?			
st_name	p_rem	m	w_p	time_s	dist	azm	s_sec	w_s	ain	mx_amp	per	p_calc	p_std	cf	f_p_time	p_res	s_std	s_res	xmag	fmag
PANI	e	c	1	15:57:00.37	16,4	137			94						22	-0,01			1	0,8
GAGG	e	c	2	15:57:00.91	19,6	245			93							-0,01			1	0
DOSS	e		2	15:57:02.86	31	180			92							0,01			0	1,1

22/03/2013	16:11:03,75	45,8303	11,0215	12,33	1,1	2,1	0	0	0,4	90	0	0,4	A	0,13	0	ROVERETO (TN)					
st_name	p_rem	m	w_p	time_s	dist	azm	s_sec	w_s	ain	mx_amp	per	p_calc	p_std	cf	f_p_time	p_res	s_std	s_res	xmag	fmag	
VARA	e	d	0	16:11:06.63	9,7	267	8,57	2	142						56	0,2		0,05	0,9	1	
DOSS	i	c	0	16:11:07.06	14,1	67	9,36	2	131						40	0,11		-0,09	1	1,1	
GAGG	i	d	1	16:11:09.17	28,6	350	13,02	2	113						29	0,11		-0,19	1,4	1,2	
PANI	i	c	0	16:11:10.12	34,5	45			110							0,11			1	1,1	
ZIAN	e		2	16:11:15.08	64,9	40			101							0,04			0	0	
CARE	e	c	1	16:11:16.14	70,6	339			100							0,14			0	0	

22/03/2013	19:39:32,10	,	,											10	RNI					
st_name	p_rem	m	w_p	time_s	dist	azm	s_sec	w_s	ain	mx_amp	per	p_calc	p_std	cf	f_p_time	p_res	s_std	s_res	xmag	fmag
RNI	i	c	1	19:39:32,10			33,17	2							33					

23/03/2013	01:11:49.68	,	,											0	VARA,DOSS					
st_name	p_rem	m	w_p	time_s	dist	azm	s_sec	w_s	ain	mx_amp	per	p_calc	p_std	cf	f_p_time	p_res	s_std	s_res	xmag	fmag
VARA	i	d	2	01:11:49.68			51,24	3							40					
DOSS			3	01:11:50.88			53,32	3							40					

23/03/2013	21:06:41,29	46,0886	11,8671	9,08	0,7	1,4	0	0	0,8	90	0	0,8	C	0,08	0	LE VETTE (BL)					
st_name	p_rem	m	w_p	time_s	dist	azm	s_sec	w_s	ain	mx_amp	per	p_calc	p_std	cf	f_p_time	p_res	s_std	s_res	xmag	fmag	
ZIAN	e		1	21:06:46.86	31,4	312				106						-0,02			0	0,5	

24/03/2013	01:39:24,09	,	,											10	METAURO	M 3.3(I)				
st_name	p_rem	m	w_p	time_s	dist	azm	s_sec	w_s	ain	mx_amp	per	p_calc	p_std	cf	f_p_time	p_res	s_std	s_res	xmag	fmag
DOSS			3	01:39:24.09											214					
VARA			3	01:39:24.32											220					
PANI			3	01:39:26.54			60,26	3							217					
RNI			3	01:39:27.83											218					
ZIAN			3	01:39:28.07			65,91	3							221					
GAGG			3	01:39:28.07			64,59	3							215					
OZOL			3	01:39:32.04			70,95	3							216					
CARE			3	01:39:33.42			71,83	3							211					

24/03/2013	02:43:54.97													10						
st_name	p_rem	m	w_p	time_s	dist	azm	s_sec	w_s	ain	mx_amp	per	p_calc	p_std	cf	f_p_time	p_res	s_std	s_res	xmag	fmag
VARA			3	02:43:54.97			70,44	3							110					
DOSS			3	02:43:55.21			70,23	3							109					
PANI			3	02:43:58.70			75,38	3							108					
RNI			3	02:43:58.88			76,77	3							108					
GAGG			3	02:43:59.52			76,51	3							105					
ZIAN			3	02:44:02.63			22	3							109					
OZOL			3	02:44:05.06			26,15	3							106					

QUATERLY BULLETTIN *January-March 2013*

DATE	TIME	Geogr. Coord.		DEPTH	Magnitude		LOCATION ERRORS							RMS	TYPE	EPICENTRAL AREA	NOTES
DD-MM-YY	HH/MM/SS	LAT N	LON E	h (Km)	MA	MD	az1	dp1	se1	az2	dp2	se2	q				

24/03/2013	03:08:22,53	,	,											10	PIANURA PADANA EMIL.	M 3.0(I)				
st_name	p_rem	m	w_p	time_s	dist	azm	s_sec	w_s	ain	mx_amp	per	p_calc	p_std	cf	f_p_time	p_res	s_std	s_res	xmag	fmag
DOSS			2	03:08:22.53			38,12	3							133					
VARA	e	d	2	03:08:22.61			37,94	3							136					
PANI			3	03:08:26.02			42,78	3							137					
RNI	e	d	2	03:08:26.43			44,33	2							138					
GAGG			3	03:08:26.57			44,43	3							135					
ZIAN	i	d	2	03:08:29.99			49,76	3							137					
OZOL			3	03:08:31.74			53,56	3							135					
CARE			3	03:08:32.93			55,14	3							130					

24/03/2013	10:28:15,31	46,6170	10,3255	8,83	1,2	1,7	0	0	2	90	0	2	C	0,27	0	ACQUA DEL GALLO (SO)					M 1.4(S)	
st_name	p_rem	m	w_p	time_s	dist	azm	s_sec	w_s	ain	mx_amp	per	p_calc	p_std	cf	f_p_time	p_res	s_std	s_res	xmag	fmag		
CARE	e	c	2	10:28:21.60	35,7	127	25,84	2	104						27	0,01		-0,65	0	0		
OZOL	e	c	1	10:28:26.05	60,6	113				98						0,28			1	0,9		

24/03/2013	16:26:30,44	,	,											0	VARA,DOSS					
st_name	p_rem	m	w_p	time_s	dist	azm	s_sec	w_s	ain	mx_amp	per	p_calc	p_std	cf	f_p_time	p_res	s_std	s_res	xmag	fmag
VARA			3	16:26:30.44			33,28	3							40					
DOSS			3	16:26:34.24			39,17	3							40					

24/03/2013	22:04:46,24	,	,											0	CARE					
st_name	p_rem	m	w_p	time_s	dist	azm	s_sec	w_s	ain	mx_amp	per	p_calc	p_std	cf	f_p_time	p_res	s_std	s_res	xmag	fmag
CARE	i	c	1	22:04:46.24			47,57	3							36					

25/03/2013	06:26:14,44	,	,											0	CARE					
st_name	p_rem	m	w_p	time_s	dist	azm	s_sec	w_s	ain	mx_amp	per	p_calc	p_std	cf	f_p_time	p_res	s_std	s_res	xmag	fmag
CARE			3	06:26:14.44			15,9	3							34					

25/03/2013	13:52:25.25	,	,											1	PANI	EXPL??				
st_name	p_rem	m	w_p	time_s	dist	azm	s_sec	w_s	ain	mx_amp	per	p_calc	p_std	cf	f_p_time	p_res	s_std	s_res	xmag	fmag
PANI	i	c	2	13:52:25.25			26,1	3							34					

25/03/2013	18:24:45,97	45,9005	11,0215	12,27	0,7	0,8	0	0	0,1	90	0	0,1	B	0,02	0	NOGAREDO (TN)							
st_name	p_rem	m	w_p	time_s	dist	azm	s_sec	w_s	ain	mx_amp	per	p_calc	p_std	cf	f_p_time	p_res	s_std	s_res	xmag	fmag			
VARA	e		2	18:24:49.02	12,8	230	51,34	2	134							0,02		-0,02	0,6	0,6			
DOSS	i	c	0	18:24:49.04	13,2	100	51,47	2	133					10		-0,01		0,02	0	0,7			
GAGG	i	d	1	18:24:50.14	20,9	347	53,33	2	120							0,02		-0,02	0,9	0			
PANI	e	c	1	18:24:51.41	29,5	55				113						-0,02			0,7	0			

25/03/2013	20:42:31,68	,	,											0	OZOL,CARE							
st_name	p_rem	m	w_p	time_s	dist	azm	s_sec	w_s	ain	mx_amp	per	p_calc	p_std	cf	f_p_time	p_res	s_std	s_res	xmag	fmag		
OZOL			3	20:42:31.68			33,75	3							35							
CARE			3	20:42:31.69			33,51	2							35							

QUATERLY BULLETTIN *January-March 2013*

DATE	TIME	Geogr. Coord.		DEPTH	Magnitude		LOCATION ERRORS						RMS	TYPE	EPICENTRAL AREA	NOTES
DD-MM-YY	HH/MM/SS	LAT N	LON E	h (Km)	MA	MD	az1	dp1	se1	az2	dp2	se2	q			

25/03/2013	22:39:15,95	,	,											0	CARE					
st_name	p_rem	m	w_p	time_s	dist	azm	s_sec	w_s	ain	mx_amp	per	p_calc	p_std	cf	f_p_time	p_res	s_std	s_res	xmag	fmag
CARE		3		22:39:15.95			16,69	2							30					

26/03/2013	02:11:44,58	45,6161	10,3995		16,88	1,3	1,9	0	0	2,8	90	0	2,8	D	0,22	0	GAVARDO (BS)			
st_name	p_rem	m	w_p	time_s	dist	azm	s_sec	w_s	ain	mx_amp	per	p_calc	p_std	cf	f_p_time	p_res	s_std	s_res	xmag	fmag
RNI	e	2		02:11:52.72	44,1	23	58,65	2	111						28	0,08		-0,28	1,1	1,2
VARA	e	2		02:11:52.93	45,2	59			110							0,11			0	1,1
DOSS	e	2		02:11:56.34	68,1	64			104							-0,22			1,6	0
GAGG	e	2		02:11:56.66	67,7	40			104							0,16			1,6	0
PANI	e	2		02:11:59.36	87,3	56			101							-0,41			1,2	1
ZIAN	e	d	2	02:12:04.03	116,3	51			59							-0,01			1,4	1,3

26/03/2013	07:47:15,21	,	,											0	OZOL					
st_name	p_rem	m	w_p	time_s	dist	azm	s_sec	w_s	ain	mx_amp	per	p_calc	p_std	cf	f_p_time	p_res	s_std	s_res	xmag	fmag
OZOL	i	c	1	07:47:15.21			16,31	3							43					

26/03/2013	09:47:18,12	,	,											0	CARE					
st_name	p_rem	m	w_p	time_s	dist	azm	s_sec	w_s	ain	mx_amp	per	p_calc	p_std	cf	f_p_time	p_res	s_std	s_res	xmag	fmag
CARE	e	2		09:47:20.46	23,4	128			107							0,1			0	0,7

26/03/2013	17:09:04,90	46,1313	11,1846		5,96	1	1,7	0	0	0,5	90	0	0,5	C	0,05	2	ALBIANO (TN)		EXPL?	
st_name	p_rem	m	w_p	time_s	dist	azm	s_sec	w_s	ain	mx_amp	per	p_calc	p_std	cf	f_p_time	p_res	s_std	s_res	xmag	fmag
PANI	i	c	0	17:09:07.59	14,7	128			112						27	-0,01			1,2	0,8
GAGG	e	c	1	17:09:08.12	18,3	253			108						25	-0,06			0,9	0,9
DOSS	e	c	1	17:09:09.82	27,9	179			102							0,04			0,9	1
ZIAN	e	1		17:09:10.63	33,4	61			100							-0,06			0,9	0,7

27/03/2013	00:20:45,38	,	,											0	VARA					
st_name	p_rem	m	w_p	time_s	dist	azm	s_sec	w_s	ain	mx_amp	per	p_calc	p_std	cf	f_p_time	p_res	s_std	s_res	xmag	fmag
VARA	e	c	1	00:20:45.38	15,2	270	47,58	2	114						7	0,01		-0,01	0,5	0,3

27/03/2013	03:26:08,92	45,6796	10,0834		9,33	1,3	2,4	0	0	1,3	90	0	1,3	C	0,06	0	G. VAL TROMPIA (BS)			
st_name	p_rem	m	w_p	time_s	dist	azm	s_sec	w_s	ain	mx_amp	per	p_calc	p_std	cf	f_p_time	p_res	s_std	s_res	xmag	fmag
RNI	e	2		03:26:18.18	53,6	51			100							-0,04			1,3	1,5

27/03/2013	11:02:12,04	46,1341	11,2091		7	0,9		0	0	0	90	0	0	C	0	2	FORNACE (TN)		EXPL?	
st_name	p_rem	m	w_p	time_s	dist	azm	s_sec	w_s	ain	mx_amp	per	p_calc	p_std	cf	f_p_time	p_res	s_std	s_res	xmag	fmag
PANI	e	2		11:02:14.63	13,4	134			118							0			0,8	0,9
GAGG	e	2		11:02:15.69	20,2	254			109							0			0,7	0,8
CARE	e	2		11:02:20.84	51	309			98							0			1,2	0

QUATERLY BULLETTIN *January-March 2013*

DATE	TIME	Geogr. Coord.		DEPTH	Magnitude		LOCATION ERRORS						RMS	TYPE	EPICENTRAL AREA	NOTES
DD-MM-YY	HH/MM/SS	LAT N	LON E	h (Km)	MA	MD	az1	dp1	se1	az2	dp2	se2	q			

27/03/2013	12:55:58,79	,	,											0	RNI					
st_name	p_rem	m	w_p	time_s	dist	azm	s_sec	w_s	ain	mx_amp	per	p_calc	p_std	cf	f_p_time	p_res	s_std	s_res	xmag	fmag
RNI		3		12:55:58.79			63,57	3							31					

27/03/2013	15:42:10,80	46,1306	11,1911		2,02	0,8		0	0	0,4	90	0	0,4	C	0,06	2	ALBIANO (TN)	EXPL?		
st_name	p_rem	m	w_p	time_s	dist	azm	s_sec	w_s	ain	mx_amp	per	p_calc	p_std	cf	f_p_time	p_res	s_std	s_res	xmag	fmag
PANI	i	c	0	15:42:13.24	14,2	129			98							-0,02			0,6	0,5
GAGG	i	c	1	15:42:13.96	18,7	254			96							-0,06			0,8	0
ZIAN	e	c	1	15:42:16.43	33	61			94							-0,02			0,7	0,7
VARA	e		2	15:42:17.88	40,8	214			93							0,09			1	1

27/03/2013	16:00:25,98	,	,											0	CARE					
st_name	p_rem	m	w_p	time_s	dist	azm	s_sec	w_s	ain	mx_amp	per	p_calc	p_std	cf	f_p_time	p_res	s_std	s_res	xmag	fmag
CARE		3		16:00:25.98			26,76	2								28				

27/03/2013	16:17:03,22	46,1116	11,2261		10,61	0,8		0	0	1	90	0	1	C	0,03	2	BASELGA DI P. (TN)	EXPL?		
st_name	p_rem	m	w_p	time_s	dist	azm	s_sec	w_s	ain	mx_amp	per	p_calc	p_std	cf	f_p_time	p_res	s_std	s_res	xmag	fmag
PANI	i	c	1	16:17:05.78	10,8	129	7,81	2	134							-0,02		-0,01	0,7	0,4
GAGG	e		2	16:17:07.27	20,9	261			117							0,04			0,8	0,7
ZIAN	e		1	16:17:08.97	31,8	55			108							0,02			0,7	0,6
CARE	e	c	1	16:17:12.52	53,6	310			101							-0,03			1	1,1

28/03/2013	06:58:21,16	,	,											10	PIANURA PADANA EMIL.	M 2.4(l)				
st_name	p_rem	m	w_p	time_s	dist	azm	s_sec	w_s	ain	mx_amp	per	p_calc	p_std	cf	f_p_time	p_res	s_std	s_res	xmag	fmag
VARA	i	d	2	06:58:21.16			35,62	3							112					
DOSS			3	06:58:21.66			36,3	3							114					
RNI			3	06:58:24.64			42,96	3							113					
PANI	i	d	2	06:58:25.10			42,27	3							112					
GAGG	i	d	2	06:58:25.71			42,85	3							113					
ZIAN			3	06:58:29.24			47,94	3							111					
OZOL			3	06:58:30.88			52,82	3							110					
CARE			3	06:58:31.45			53,94	3							109					

28/03/2013	09:09:49,21	45,5525	10,8039		10,73	0,8	1,6	0	0	4,5	90	0	4,5	D	0,09	0	BARDOLINO (VR)			
st_name	p_rem	m	w_p	time_s	dist	azm	s_sec	w_s	ain	mx_amp	per	p_calc	p_std	cf	f_p_time	p_res	s_std	s_res	xmag	fmag
VARA	e		2	09:09:54.86	31,2	13			109							0			0,9	0,7

29/03/2013	13:34:39,43	45,9611	10,7166		11,46	0,8	1,3	0	0	0,8	90	0	0,8	B	0,11	0	TIONE (TN)			
st_name	p_rem	m	w_p	time_s	dist	azm	s_sec	w_s	ain	mx_amp	per	p_calc	p_std	cf	f_p_time	p_res	s_std	s_res	xmag	fmag
RNI	e		2	13:34:41.85	7,6	287	43,65	2	146						12	0,07		0,04	0,5	0,8
VARA	e		2	13:34:43.44	20,5	137			119							-0,01			0,7	0
GAGG	e		1	13:34:43.85	23,2	54			116							0			0	1,3

29/03/2013	20:08:40,30	,	,											0	RNI					
st_name	p_rem	m	w_p	time_s	dist	azm	s_sec	w_s	ain	mx_amp	per	p_calc	p_std	cf	f_p_time	p_res	s_std	s_res	xmag	fmag
RNI	e		1	20:08:40.30	9,4	353	42,61	2	147							-0,03		0,02	-0,3	0,1

QUATERLY BULLETTIN *January-March 2013*

DATE	TIME	Geogr. Coord.		DEPTH	Magnitude		LOCATION ERRORS							RMS	TYPE	EPICENTRAL AREA	NOTES
DD-MM-YY	HH/MM/SS	LAT N	LON E	h (Km)	MA	MD	az1	dp1	se1	az2	dp2	se2	q				

30/03/2013	15:32:56,53	,	,											10	PIANURA PADANA EMIL.	M 2.3(I)				
st_name	p_rem	m	w_p	time_s	dist	azm	s_sec	w_s	ain	mx_amp	per	p_calc	p_std	cf	f_p_time	p_res	s_std	s_res	xmag	fmag
VARA	e	d	2	15:32:56.53			71,3	3							104					
DOSS			3	15:32:57.12			71,61	3							101					
PANI			3	15:33:00.41			17,4	3							101					
RNI			3	15:33:00.50			17,86	3							102					
GAGG			3	15:33:00.93			18,28	3							98					
ZIAN			3	15:33:04.40			23,53	3							104					
OZOL			3	15:33:06.69			27,97	3							97					
CARE			3	15:33:07.25			29,04	3							97					

30/03/2013	20:44:01,54	,	,												10	CUNESE-VALLE STURA	M 2.7(I)			
st_name	p_rem	m	w_p	time_s	dist	azm	s_sec	w_s	ain	mx_amp	per	p_calc	p_std	cf	f_p_time	p_res	s_std	s_res	xmag	fmag
RNI	e	c	2	20:44:01.54											160					
CARE			3	20:44:09.75											157					

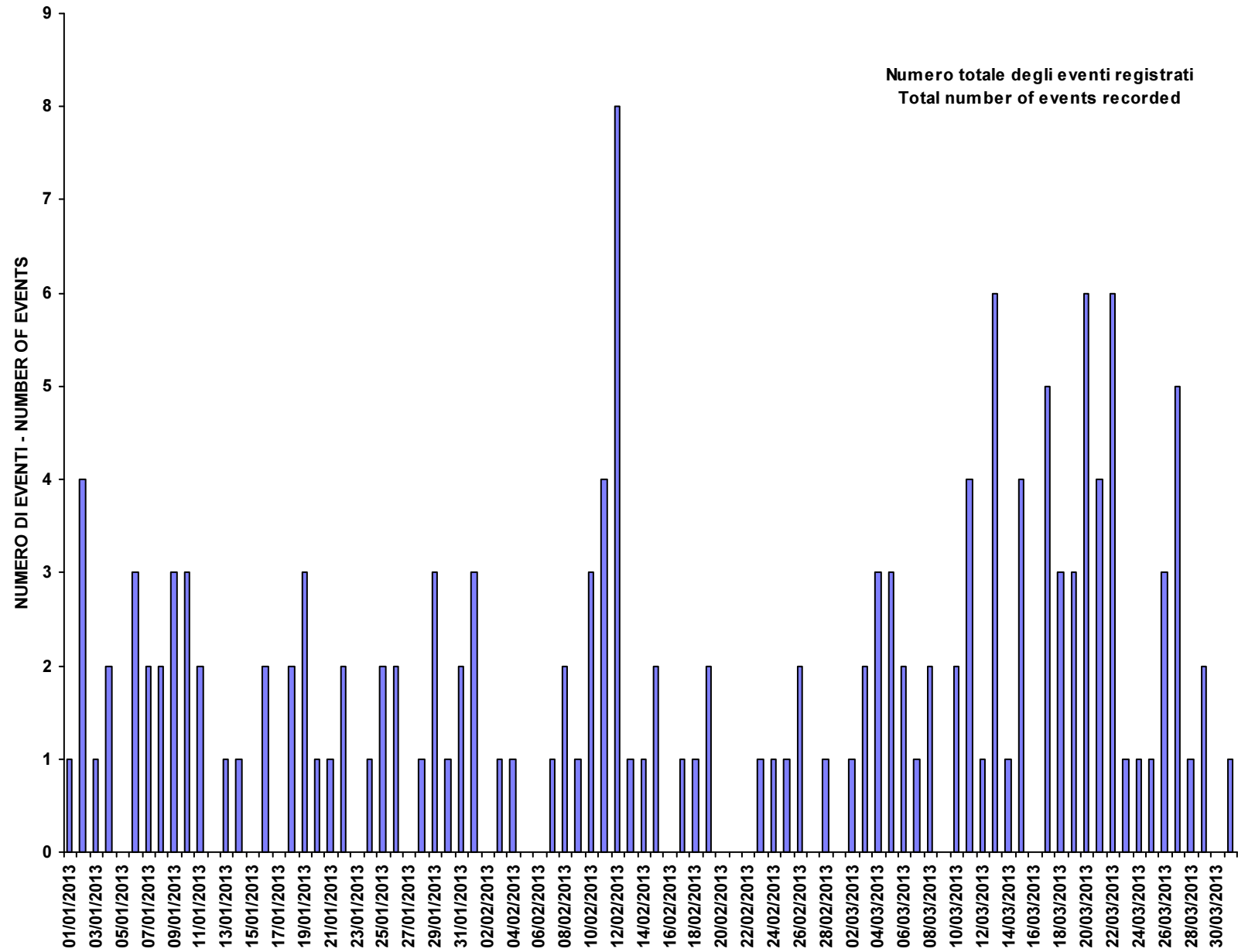
30/03/2013	21:30:38,67	,	,											0	VARA					
st_name	p_rem	m	w_p	time_s	dist	azm	s_sec	w_s	ain	mx_amp	per	p_calc	p_std	cf	f_p_time	p_res	s_std	s_res	xmag	fmag
VARA			3	21:30:38.67			41,03	3							51					

31/03/2013	03:15:35.45	,	,											10	PIANURA PADANA EMIL.	M 2.3(I)				
st_name	p_rem	m	w_p	time_s	dist	azm	s_sec	w_s	ain	mx_amp	per	p_calc	p_std	cf	f_p_time	p_res	s_std	s_res	xmag	fmag
VARA			3	03:15:35.45			48,98	2							105					
DOSS			3	03:15:36.44			49,53	3							96					
RNI			3	03:15:39.60			55,85	3							100					
GAGG			3	03:15:39.96			56,45	3							98					
CARE			3	03:15:46.65			67,75	3							96					

31/03/2013	03:51:43,77	46,6441	12,2981		7,59	1	1,7	0	0	1,2	90	0	1,2	C	0,23	0	TRE C. LAVAREDO (BL)				
st_name	p_rem	m	w_p	time_s	dist	azm	s_sec	w_s	ain	mx_amp	per	p_calc	p_std	cf	f_p_time	p_res	s_std	s_res	xmag	fmag	
OZOL	e		2	03:52:00.86	99,3	254				94						0,07			1	0	

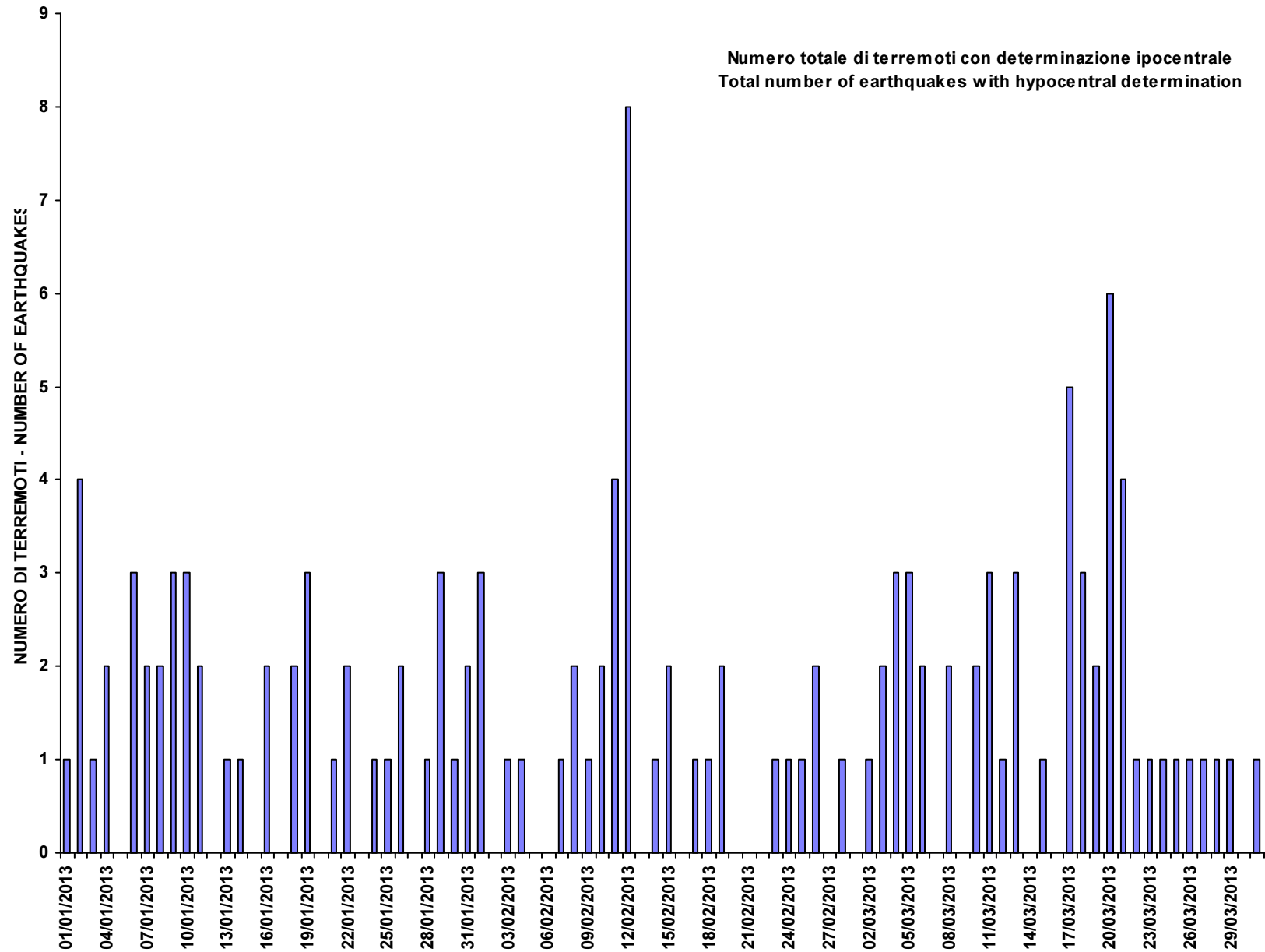
RETE SISMICA DEL TRENTINO ; PERIODO : GENNAIO - MARZO 2013

TRENTINO SEISMOMETRIC NETWORK ; PERIOD : JANUARY - MARCH 2013



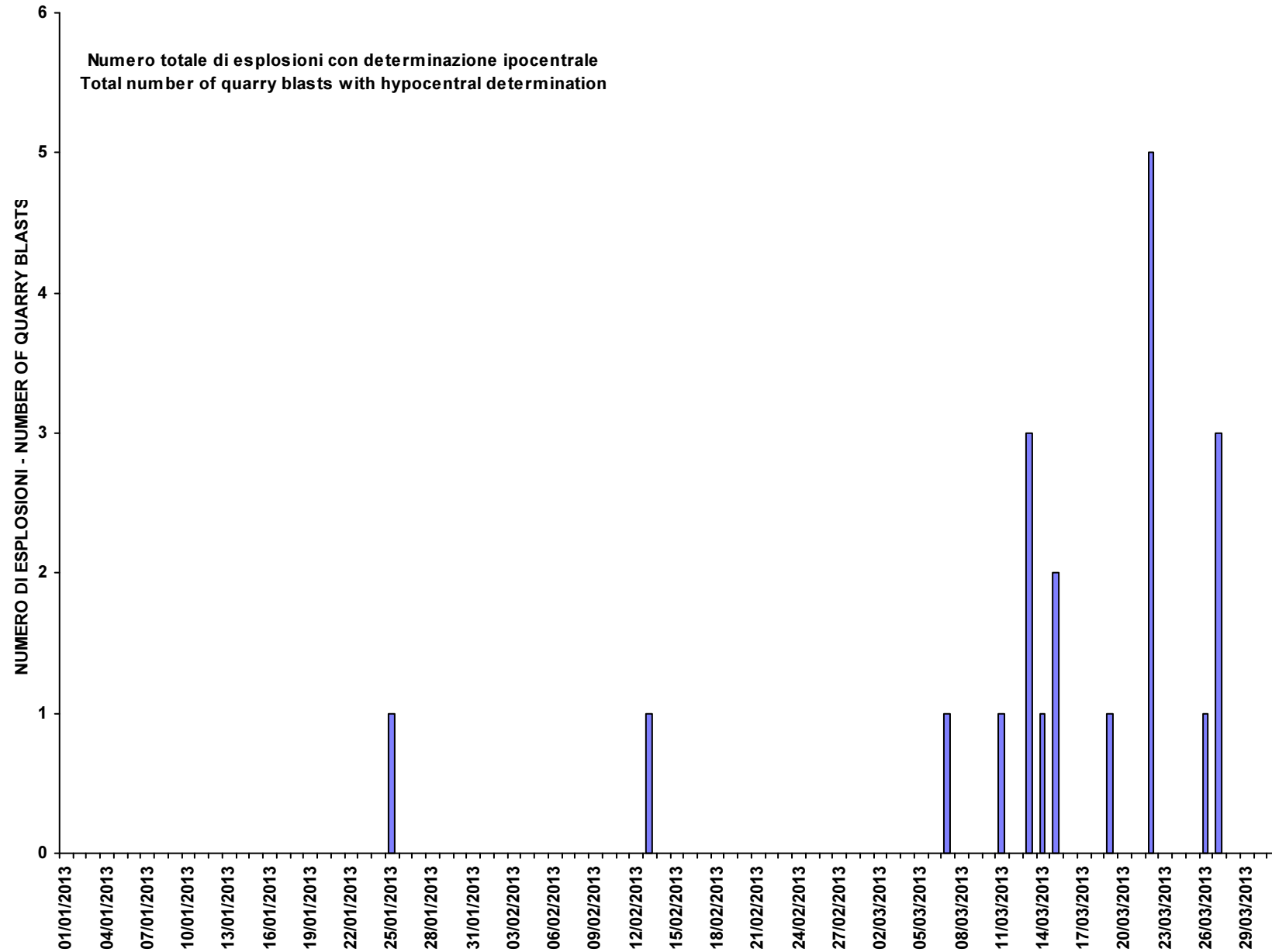
RETE SISMICA DEL TRENTINO ; PERIODO : GENNAIO - MARZO 2013

TRENTINO SEISMOMETRIC NETWORK ; PERIOD : JANUARY - MARCH 2013



RETE SISMICA DEL TRENTINO ; PERIODO : GENNAIO - MARZO 2013

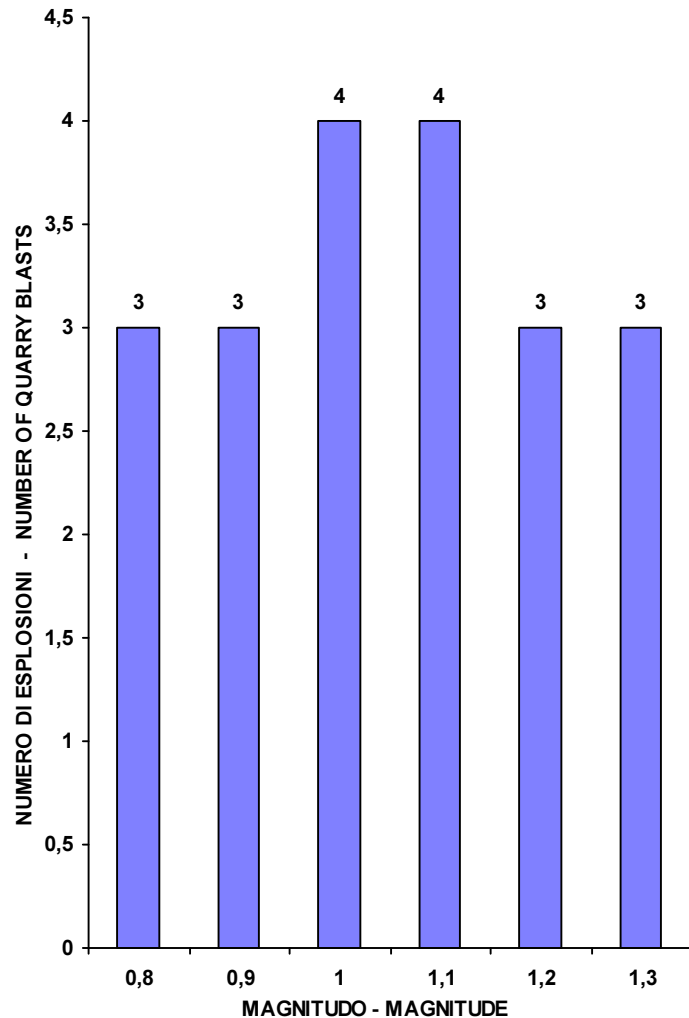
TRENTINO SEISMOMETRIC NETWORK ; PERIOD : JANUARY - MARCH 2013



RETE SISMICA DEL TRENTINO ; PERIODO : GENNAIO - MARZO 2013

TRENTINO SEISMOMETRIC NETWORK ; PERIOD : JANUARY - MARCH 2013

Numero di esplosioni in funzione della magnitudo
Number of quarry blasts versus magnitude



Numero di terremoti in funzione della magnitudo
Number of earthquakes versus magnitude

